

ENR THE TOP 600

Overview p. 56 // Specialties Revenue Analysis p. 56 // Markets Revenue Analysis p. 57 // Profitability p. 57 // New Contracts p. 57 // 10-Year Revenue Trends p. 58 // Team Slashes Schedule With Modular Mechanical Skids p. 58 // Top 50 Mechanical p. 60 // Top 600 Dialogue pp. 62, 67 // Top 50 Electrical p. 63 // Top 20 Demolition/Wrecking p. 64 // Top 20 Abatement/Environmental p. 64 // Top 20 Sheet-Metal p. 64 // Top 20 Steel p. 64 // Top 20 Glazing/Curtain Wall p. 65 // Top 20 Painting p. 65 // Top 20 Masonry p. 65 // Top 20 Fire Protection and Sprinkler p. 66 // Top 20 Wall/Ceiling p. 66 // Top 20 Utility p. 66 // Top 20 Excavation p. 68 // Top 20 Roofing p. 68 // Top 20 Concrete p. 68 // Top 10 Deep Foundations p. 69 // Top 10 Int./Millwork p. 69 // Top 10 MBE Firms p. 69 // Top 10 WBE Firms p. 69 // ASRC Industrial Handles Navy Ordnance Cleanup p. 70 // Evans Contracting Group Finds Its Footing p. 72 // How to Read the Top 600 Tables p. 72 // The ENR Top 600 Specialty Contractors List p. 73 // Where to Find the Top 600 p. 86

SUSPENDED A crew from O'Connell Electric dismantles an existing transmission tower near Batavia, N.Y. Workers would build two 140-ft structures and tie into 345kV lines from a new substation as part of the project.



PHOTO BY ALYCEA MACHTEL, O'CONNELL ELECTRIC

NUMBER 155

Data Surge Juices Market Rise

Top 600 specialty contractors shift operations as talent needs, technology and tighter project timelines transform priorities By Emell Adolphus and Jonathan Keller



The economic fallout from the Trump administration's tariff war has already breached jobsites through acute materials cost increases and accelerated project timelines, say ENR's Top 600 Specialty Contractors. Yet contracting executives say added pressures are also boosting innovation in a market where data demands are rapidly transforming how contractors work together.

This year marked a fourth consecutive year of revenue growth for Top 600 Specialty Contractors, with the 2025 total for the prior year up 11.8% to \$239.9 billion. Also, 97.3% of ranked specialty contractors that reported profit status noted it rose in 2024—up from 95.8% previously. While 68.5% of Top 600 specialty contractors reported higher revenue this year, that percentage is down from 73.3% last year and 79.4% two years ago.

Beyond the numbers, specialty contractors say establishing the right relationships is still key in driving projects and profitability forward amid intensifying industry challenges and increasing costs.

“Construction is a relationship business,” says Alter-

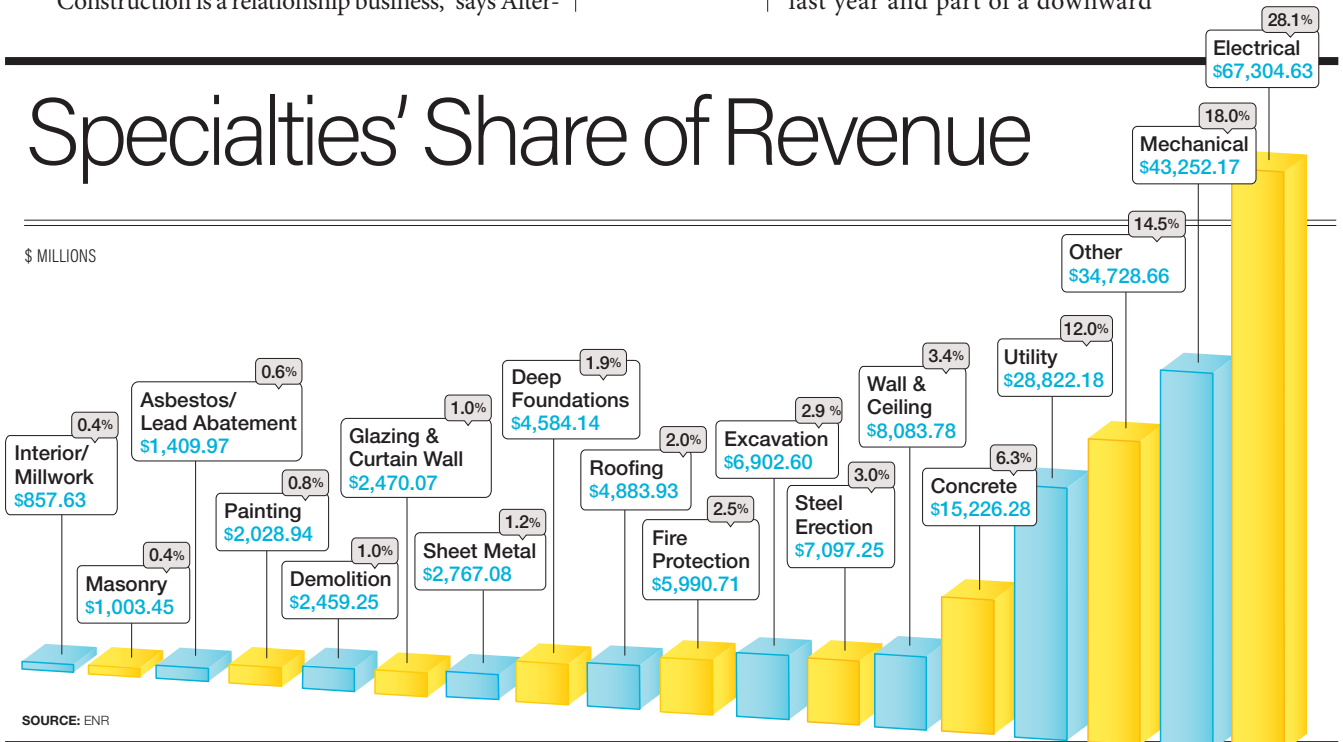
man Inc. President and CEO Greg Padalecki. “As a subcontractor, we network with other subs and hear the stories. A [general contractor’s] ability to manage a project greatly affects a subcontractor’s profitability.” The firm is ranked No. 93 on this year’s Top 600 list.

Padalecki adds, “It is our responsibility to diligently investigate before we jump in on a subcontract.”

Shifting Labor Resources

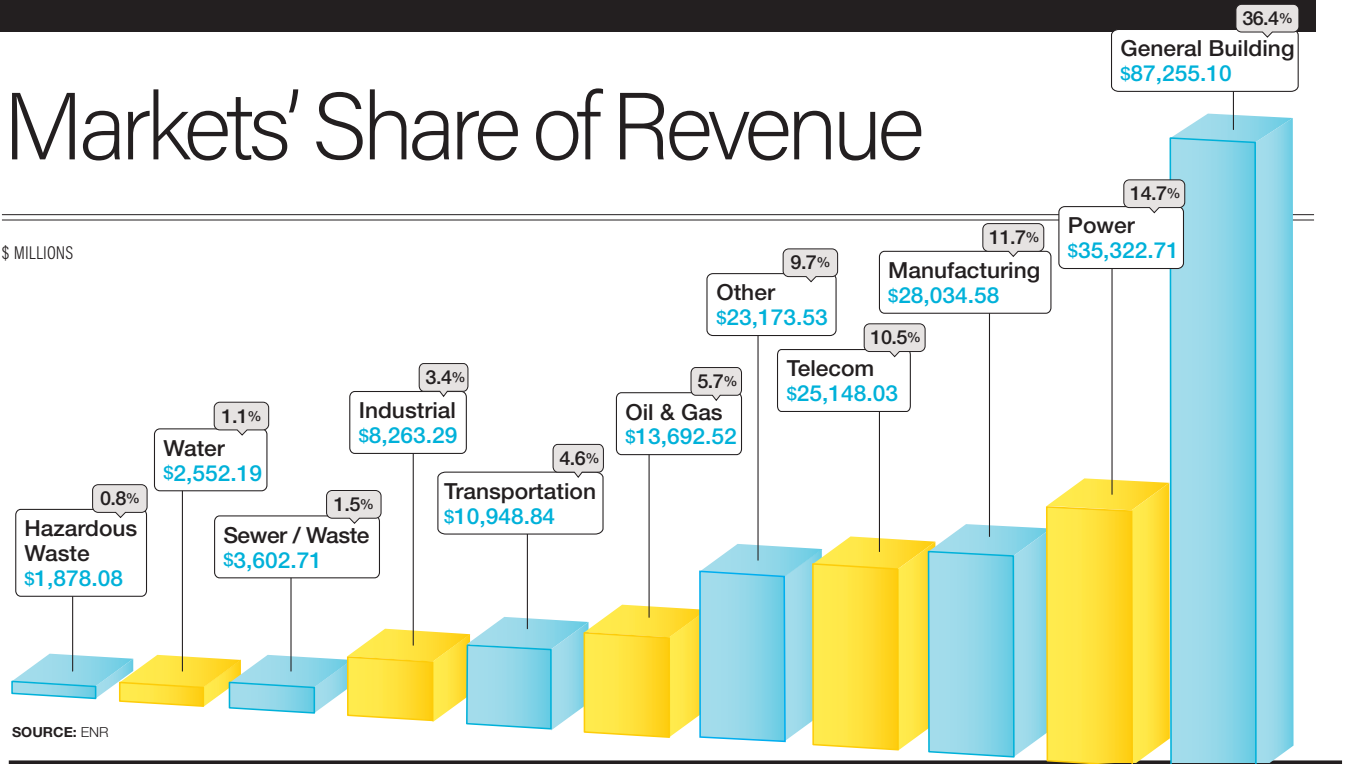
According to Top 600 specialty contracting data, such diligence has also helped reduce challenges posed by a limited labor pool. Overall, 57.3% of firms still report being short of workers, an improvement from 64.3% last year and part of a downward

Specialties' Share of Revenue



Markets' Share of Revenue

\$ MILLIONS



SOURCE: ENR

trend with this year's number, the lowest percentage reported since 55.5% did in 2015. Additionally, less than 50% of Top 600 firms that list concrete as a primary specialty say they have a shortage. That percentage has been shrinking since the 2022 survey, when the equivalent number was 83.9%. Last year, 72.7% of utility firms reported worker shortages, down to 62.9% on this year's survey.

"We've learned that cross-training our operational teams across the different scopes of services we offer is key to staying agile in an ever-changing construction market," says Isaiah Wayne, president at the No. 199 ranked Wayne Brothers Cos. in Davidson, N.C. "This flexibility allows us to pivot to one sector when another slows down, helping keep revenue targets consistent. It also builds stronger teams and reduces the silos that can develop within separate operating groups."

Balancing Cost Flow

In order to skillfully meet labor demands amid limited pools, Top 600 firms say workers must be treated as a limited resource to be carefully used, enabling better cost control.

For U.S. Engineering Holdings, ranked No. 86,

540

firms on the list also sent in a survey last year

68.5%

report that revenue rose between 2023 and 2024

30.6%

report that revenue fell between 2023 and 2024

President Brandon Wikoff says "pressure on procurement" feeds into labor as a "major driver" of increased construction costs, "both from wage growth and from investment required to attract and retain talent at the pace our work requires." He adds that the other "industry reality is cash management."

Top 600 firms report that 25.5% of their receivables are past due, down slightly from 25.9% on last year's survey and 26.7% noted two years ago.

Widening gaps between receivables and subcontractor payment can create unbalanced cash flow for many firms, says Wikoff, which he says his company manages with "disciplined billing" and "rigorous project controls."

Next year, "our goals are clear," says Wikoff. They include expanding the firm's offsite capacity and shoring up its field leadership with "structured training [and] succession planning." To reduce field labor, Wikoff says the firm intends to "standardize prefab workflows across all business units so model-to-manufacturing-to-installation runs on a single playbook."

Sunland Asphalt & Construction LLC CEO Matt Johnson applauds a trend the firm is seeing in which individuals from non-adjacent industries are beginning

The Top 600 Specialty Contractors' Profitability

SOURCE: ENR



Loss in profits
Gain in profits
(Measured in firms reporting)

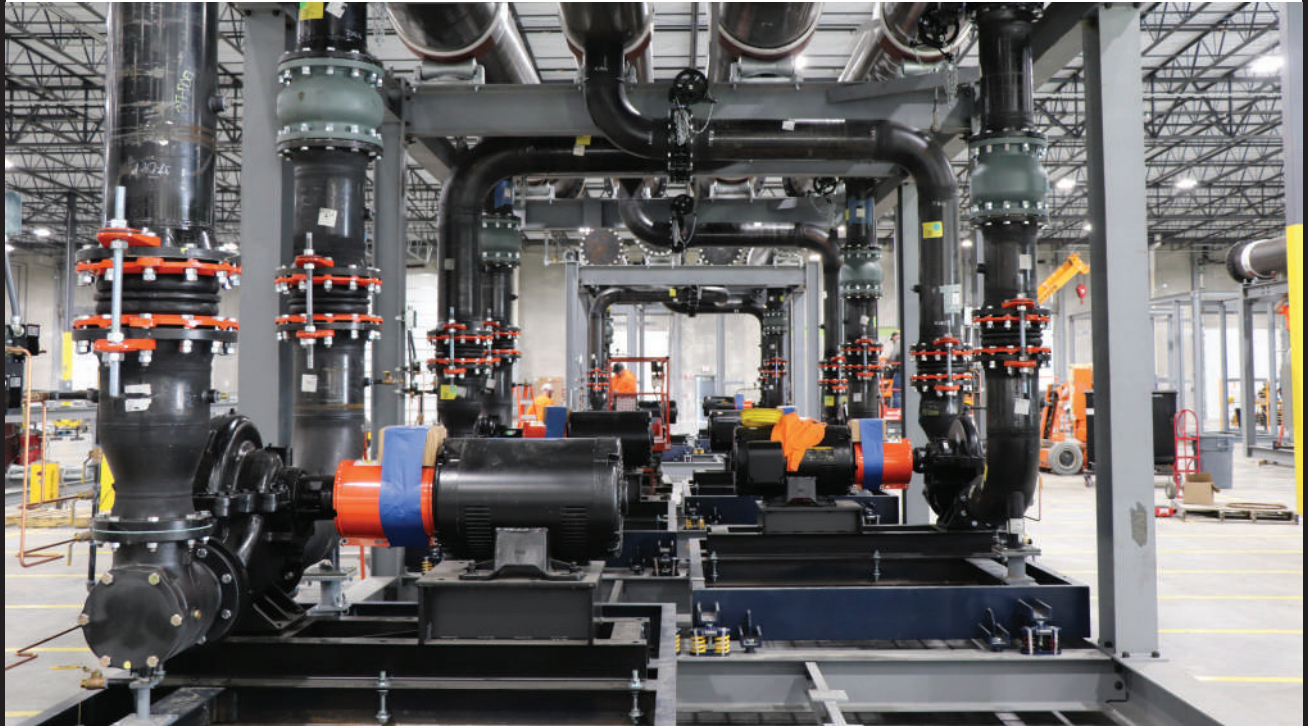
The Top 600 Specialty Contractors' New Contracts



2024
2025
(Measured in \$ millions)

On the Jobsite | By Jonathan Keller

Team Slashes Schedule With Modular Mechanical Skids



Baker Group (**No. 137**) provided mechanical contracting services on a hyperscale data center project at a remote site in the upper Midwest. The project team used modular mechanical skids, prefabricated offsite by Baker, to save four months on the mechanical schedule, the firm says. The skids, which contained the critical infrastructure, were then set into place by onsite crews. The largest skid weighed 34 tons.

to explore careers in the skilled trades. “This shift presents an opportunity, as construction offers a viable path to financial stability and the ability to support families



“With the rising costs of higher education, some younger individuals are favoring trade jobs over traditional college degrees.”

James Barlow, CEO, BZI

better,” says Johnson, explaining that a “critical challenge” for the No. 123 listed firm is in helping newcomers in the skilled trades “navigate the first 60–90 days.” He adds, “The work is physically demanding, and acclimating to the environment and expectations requires targeted support and guidance.”

Driving Industry Change

The Associated Builders and Contractors estimates that the construction industry needs to hire more than 400,000 new workers this year to keep up with demand. “With the rising costs of higher education, some younger individuals are favoring trade jobs over traditional college degrees,” says BZI CEO James Barlow.

Comparing the Past Decade's Specialty Contractor Revenue

\$ BILLIONS



SOURCE: ENR



“Tariff price uncertainty has been the most challenging aspect of price control in 2025.”

John Falzone, COO, MTech Mechanical

Particularly, Barlow says he has noticed more Gen Z workers entering the workforce and opting for skilled labor positions. “It’s a path that resonates with many young people looking for financial independence and meaningful work,” he contends.

Last year, a CNBC broadcast report found that such a shift in career interest could be fueled by economic uncertainty, steering Gen Z and younger workers away from potential college debt into the security of a career in the skilled trades.

According to employee data collected and published

by human resources online platform Gusto, skilled trade professions including electricians, plumbers and mechanics are seeing a gradual uptick in employees who are aged between the 18 and 25.

Ranked No. 119 on this year’s Top 600 list, Barlow says BZI launched its SteelTech Academy training and skill development center to provide these workers with skills they need in entering the trades. The academy has issued thousands of certifications in areas such as OSHA compliance, equipment operations, fall protection and welding, he adds.

Tackling Tariffs

For many Top 600 special contractors, the Trump administration’s emerging tariff policy has added a layer of cost uncertainty to supply chain risks.

MTech Mechanical COO John Falzone says the company’s supply chain challenges have improved since the early pandemic years. However, he adds, “tariff price uncertainty has been the most challenging aspect of price control in 2025, adding that it’s “hard to ignore cost increases with the continued uncertainty

THE TOP 50 FIRMS IN MECHANICAL									
RANK	RANK	FIRM	(\$ MIL.)	% CHANGE	RANK	RANK	FIRM	(\$ MIL.)	% CHANGE
2025	2024		2024 REV.	'23-'24	2025	2024		2024 REV.	'23-'24
1	1	EMCOR GROUP INC.	6,846.1	+21	26	23	HILL MECHANICAL CORP.	392.6	+11
2	2	COMFORT SYSTEMS USA INC.	4,637.0	+46	27	50	THE STATE GROUP	383.4	+120
3	4	SOUTHLAND INDUSTRIES	2,737.4	+41	28	20	MURRAY CO.	370.6	-15
4	3	ACCO ENGINEERED SYSTEMS	2,152.1	+8	29	16	API GROUP	350.9	-29
5	5	APOLLO SHEET METAL INC.	1,200.0	+26	30	42	IES HOLDINGS INC.	317.3	+50
*6	**	LEGENGE	1,053.0	NA	31	30	ICON MECHANICAL	302.2	+9
7	6	HARRIS	994.1	+5	32	45	SPC MECHANICAL	294.2	+50
8	8	EQUANS	849.4	+6	33	**	BROCK	289.5	NA
9	10	CERRIS SYSTEMS	801.7	+46	34	33	R.T. MOORE CO. INC.	287.3	+4
10	11	BMWC CONSTRUCTORS INC.	744.4	+36	35	40	CHARTER MECHANICAL	281.7	+28
11	9	MCKENNEY'S INC.	684.3	+14	36	28	RK INDUSTRIES LLC	278.1	-4
12	7	HARDER MECHANICAL	654.7	-22	37	37	PACIFIC RIM MECHANICAL	258.9	+10
13	**	TDINDUSTRIES	643.5	NA	38	38	JACK B. HENDERSON CONSTR. CO. INC.	258.8	+10
14	18	HELM GROUP	587.4	+31	39	31	E.M. DUGGAN INC.	258.1	-7
15	22	MURPHY CO.	566.3	+58	40	43	AMPAM PARKS	250.0	+25
16	12	MACDONALD-MILLER FACILITY SOLUTIONS	554.0	+7	41	27	YTG LLC	222.9	-24
17	19	U.S. ENGINEERING HOLDINGS	537.0	+21	42	**	MSS SOLUTIONS	217.0	+58
18	32	HERMANSON CO.	532.9	+93	43	48	MULLINS MECHANICAL & WELDING LLC	216.6	+22
19	15	MCKINSTRY	517.0	+3	44	46	J. F. AHERN CO.	214.6	+10
20	14	LIMBACH FACILITY SERVICES	503.2	0	45	**	MTECH MECHANICAL	212.0	+51
21	13	HB MECHANICAL GROUP	491.2	-4	46	41	TWEET GAROT MECHANICAL	189.8	-12
22	17	JOHN E. GREEN CO.	436.5	-7	47	47	IVEY MECHANICAL CO.	188.9	+4
23	24	ROGERS BUILDING SOLUTIONS	424.5	+22	48	**	LETSOS CO.	184.5	+8
24	25	JH KELLY LLC	424.2	+39	49	36	WDF	183.4	-23
25	21	PAN-PACIFIC MECHANICAL LLC	421.0	+3	50	34	EVERUS CONSTRUCTION GROUP	179.5	-31

NA=NOT AVAILABLE. ** =NOT PREVIOUSLY RANKED.

* FIRM FILED WITH THEIR NET REVENUE INSTEAD OF GROSS.

The Top 600 Dialogue

What innovations have your company made recently to improve jobsite work conditions?

#106
on the
Top 600 List



KANE CUDDY, PRESIDENT
BOND CIVIL & UTILITY CONSTRUCTION INC.
Medford, Mass.

"We've launched new safety programs that leverage data from platforms to track trends and target job-specific hazards. At each project's outset, we review historical safety data and provide focused training, resulting in measurable improvements in safety."

#230
on the
Top 600 List



STEVE HAMILTON, PRESIDENT
DONLEY COMPANIES
Cleveland, Ohio

"With construction workers five times more likely to die by suicide, it feels irresponsible not to take this issue seriously. Our approach starts with ensuring a healthy work environment by addressing tropes such as bullying and poor jobsite conditions."

How has technology investment helped you better understand how your team tackles its workload?

#59
on the
Top 600 List



CHRIS BUCKMAN, PRESIDENT AND CEO
BMWC CONSTRUCTORS INC.
Indianapolis, Ind.

"The notion that more experienced team members are less likely to adopt new technologies is more perception than reality. They understand better than anyone that new technologies can lead to operational efficiencies and advancements in safety."

#93
on the
Top 600 List



GREG PADALECKI, PRESIDENT AND CEO
ALTERMAN INC.
Live Oak, Texas

"With such stress on the workforce, we are committed to process improvement that increases field production while providing a safe work environment. Older workers have been adapting as we've supplemented them with younger, tech-savvy people."

in markets.” The company is ranked No. 218.

At Bond Civil & Utility Construction, ranked No. 106, President Kane Cuddy says tariffs and supply chain disruptions have directly affected the company’s ability to deliver projects on schedule.

“Tariffs, supply chain disruptions and project delays have all tested our resilience,” he says, explaining that delays in receiving electrical panels on a recent transmission project required a resequencing of work and coordination with the owner to mitigate schedule risks. The experience has forced the specialty contractor to rethink its procurement strategies, says Cuddy.

“Yet despite these challenges, we achieved notable successes,” he adds. “Our electrical transmission sector grew rapidly, driven by the urgent need to modernize aging infrastructure and support new renewable energy interconnections.”

For Brock Group, ranked No. 24, “cost increases are a concern,” says CEO Frank Bardonaro. “But we got ahead of this by ordering a lot of our forecasted needs a year ahead of time.” He says the specialty contractor’s “ability to combine large bulk purchasing,



“Cost increases are a concern but we got ahead of this by ordering a lot of our forecasted needs a year ahead.”

Frank Bardonaro, CEO, Brock Group

identify new U.S.-based vendors and improve fleet and equipment sharing across all businesses” has helped it minimize the impact of increased project costs on materials.

Market Ups and Downs

Revenue in most markets that ENR tracks rose by double digits between last year and this year for Top 600 contractors. The largest jumps were seen in telecommunications, up 65.1%; hazardous waste up 30.3%; and power, up 24.6%. The only market with a signifi-

THE TOP 50 FIRMS IN ELECTRICAL

RANK		FIRM	(\$ MIL.)	% CHANGE	RANK		FIRM	(\$ MIL.)	% CHANGE
2025	2024		2024 REV.	'23-'24	2025	2024		2024 REV.	'23-'24
1	1	QUANTA SERVICES	7,101.8	+13	26	25	WAYNE J. GRIFFIN ELECTRIC INC.	616.0	+13
2	3	EMCOR GROUP INC.	3,787.2	+31	27	28	TRI-CITY GROUP	537.5	+22
3	4	ROSENDIN ELECTRIC	3,700.0	+32	28	35	ALTERMAN INC.	490.3	+31
4	2	MYR GROUP INC.	3,360.0	-8	29	50	ALLISON SMITH CO.	472.0	+84
5	9	MMR GROUP	2,331.4	+69	30	36	INTERSTATES	469.9	+26
6	5	IES HOLDINGS INC.	2,221.0	+3	31	38	INGLETT & STUBBS	456.0	+30
7	7	M.C. DEAN	2,026.0	+13	32	33	ROGERS ELECTRIC	445.0	+14
8	8	EVERUS CONSTRUCTION GROUP	1,783.9	0	33	30	JMEG LLC	437.0	+9
9	10	ARCHKEY SOLUTIONS	1,700.0	+49	34	29	ISC CONSTRUCTORS LLC	433.7	+5
10	12	FAITH TECHNOLOGIES INC.	1,400.0	+32	35	34	GUARANTEE ELECTRICAL CO.	402.9	+6
11	16	THE E-J GROUP	1,360.0	+60	36	45	VALLEY ELECTRIC	394.0	+40
12	11	POWER DESIGN	1,345.7	+22	37	49	ENCORE ELECTRIC	393.0	+43
13	13	COMFORT SYSTEMS USA INC.	1,292.7	+27	38	48	ACE ELECTRIC INC.	385.6	+40
14	26	THE STATE GROUP	1,283.6	+135	39	47	PRISM ELECTRIC	385.5	+38
15	21	MOTOR CITY ELECTRIC CO.	1,093.0	+36	40	**	CUMMINGS ELECTRICAL	364.2	+66
16	14	CACHE VALLEY ELECTRIC CO.	1,079.5	+14	41	46	LAKE ERIE ELECTRIC COS.	358.9	+28
17	20	ALDRIDGE ELECTRIC INC.	957.6	+19	42	31	BAKER ELECTRIC & RENEWABLES	358.1	-9
18	15	HELIX ELECTRIC	957.0	+11	43	42	COMMONWEALTH HOLDINGS INC.	357.5	+9
19	18	THE NEWTRON GROUP	933.0	+11	44	37	NOX GROUP	356.2	-1
20	19	EQUANS	915.4	+11	45	41	SARGENT ELECTRIC CO.	353.4	+7
21	17	HUNT ELECTRIC CORP.	900.0	+6	46	44	CLEVELAND ELECTRIC CO.	352.9	+20
22	22	BERGELECTRIC CORP.	824.6	+6	47	43	THE MORSE GROUP INC.	338.7	+11
23	27	GAYLOR ELECTRIC	750.8	+70	48	**	ERMCO INC.	331.9	+36
24	24	MILLER ELECTRIC CO.	748.0	+23	49	32	FISK ELECTRIC CO.	329.6	-16
25	23	HATZEL & BUEHLER INC.	725.4	+15	50	**	CEC FACILITIES LLC	327.3	+39

NA=NOT AVAILABLE. ** =NOT PREVIOUSLY RANKED.

THE TOP 20 FIRMS IN DEMOLITION AND WRECKING

RANK	RANK	FIRM	(\$ MIL.)	% CHANGE
2025	2024		2024 REV.	'23-'24
1	1	NORTHSTAR GROUP SERVICES INC.	470.4	+4
2	2	BRANDENBURG INDUSTRIAL SERVICE CO.	279.2	+7
3	3	PENHALL CO.	232.5	-7
4	4	D.H. GRIFFIN WRECKING CO. INC.	211.3	-1
5	5	INDEPENDENCE EXCAVATING	141.9	0
6	6	SELECT DEMO SERVICES LLC	130.5	+4
7	7	BIERLEIN COS. INC.	96.6	+19
8	9	ISI DEMOLITION	75.2	+13
9	8	AMPCO CONTRACTING INC.	72.0	+6
10	15	VEIT & CO. INC.	68.2	+53
11	17	MANAFORT BROTHERS INC.	55.7	+40
12	12	O'ROURKE WRECKING CO.	54.0	+2
13	13	NORTH AMERICAN DISMANTLING CORP.	49.9	-2
14	16	JACKSON DEMOLITION SERVICE INC.	46.4	+5
15	14	ASRC INDUSTRIAL	45.1	-8
16	**	BERG DEMO GROUP	41.6	+39
17	18	ADAMO DEMOLITION CO.	41.5	+8
18	**	HARDER MECHANICAL	37.2	NA
19	19	BAYVIEW SERVICES	36.4	0
20	**	SPIRTAS WRECKING CO.	35.2	NA

NA=NOT AVAILABLE. ** =NOT PREVIOUSLY RANKED.

THE TOP 20 FIRMS IN ABATEMENT/ENVIRONMENTAL

RANK	RANK	FIRM	(\$ MIL.)	% CHANGE
2025	2024		2024 REV.	'23-'24
1	**	FELIX CONSTRUCTION CO.	204.1	NA
2	2	EIS HOLDINGS LLC	196.3	+10
3	4	ATI RESTORATION	110.3	+8
4	**	GEO-SOLUTIONS INC.	110.0	NA
5	1	ASRC INDUSTRIAL	108.9	-58
6	**	INNOVATIVE CONSTRUCTION SOLUTIONS	91.9	NA
7	6	ALLOY	79.0	+21
8	5	NORTHSTAR GROUP SERVICES INC.	59.5	-20
9	7	BAYVIEW SERVICES	54.6	0
10	8	PERFORMANCE CONTRACTING GROUP INC.	52.9	+16
11	15	PRECISION ENVIRONMENTAL CO.	49.1	+122
12	20	FORTHRIGHT ENVIRONMENTAL SERVICES	30.7	+88
13	**	BROCK	30.0	NA
14	9	PARC ENVIRONMENTAL	29.9	-24
15	10	WINTER ENVIRONMENTAL	27.0	-31
16	14	DEMOLITION & ASBESTOS REMOVAL INC.	26.2	+12
17	16	AAC CONTRACTING	24.0	+9
18	13	IREX CONTRACTING GROUP	21.5	-15
19	**	TALON/LPE LTD.	20.2	NA
20	12	INTERNATIONAL ASBESTOS REMOVAL INC.	16.5	-47

NA=NOT AVAILABLE. ** =NOT PREVIOUSLY RANKED.

THE TOP 20 FIRMS IN SHEET METAL

RANK	RANK	FIRM	(\$ MIL.)	% CHANGE
2025	2024		2024 REV.	'23-'24
1	1	API GROUP	350.9	+6
2	2	POYNTER	343.5	+33
3	3	FLYNN GROUP OF COS.	229.0	-8
4	5	HILL MECHANICAL CORP.	130.9	+11
5	6	DEE CRAMER	105.4	-6
6	4	CROWN CORR INC.	94.0	-22
7	**	MCCLURE CO.	78.1	NA
8	10	J. F. AHERN CO.	77.5	+10
9	9	GOYETTE MECHANICAL CO.	77.4	-4
10	**	KOVACH ENCLOSURE SYSTEM	74.4	NA
11	7	BONLAND INDUSTRIES INC.	74.3	-14
12	11	BAKER GROUP	71.0	+11
13	8	CERRIS SYSTEMS	70.5	-16
14	**	B & I CONTRACTORS INC.	65.3	NA
15	**	M. G. MCGRATH INC.	57.0	NA
16	18	PI CONSTRUCTION LLC	54.3	+14
17	**	MCKAMISH INC.	52.8	+44
18	14	MURRAY CO.	49.4	-17
19	20	IVEY MECHANICAL CO.	47.2	+4
20	**	DOUGLASS COLONY GROUP	39.1	+19

NA=NOT AVAILABLE. ** =NOT PREVIOUSLY RANKED.

THE TOP 20 FIRMS IN STEEL

RANK	RANK	FIRM	(\$ MIL.)	% CHANGE
2025	2024		2024 REV.	'23-'24
1	1	STEEFAB INC.	2,304.8	+4
2	2	SCHUFF STEEL CO.	733.6	-38
3	3	LEXICON INC.	674.7	-5
4	4	COOPER STEEL	593.1	-1
5	7	SURE STEEL INC	441.2	+15
6	**	BZI	395.6	NA
7	9	BASDEN STEEL CORP.	160.3	-34
8	11	RED CEDAR STEEL	150.0	+36
9	10	THE WILLIAMS GROUP	139.1	-4
10	14	DUNN BUILDING CO.	120.5	+59
11	19	STONEBRIDGE INC.	98.4	+118
12	**	PITTSBURG TANK & TOWER GROUP INC.	93.6	+235
13	**	OWEN STEEL COMPANY INC.	93.2	NA
14	17	JH KELLY LLC	91.9	+81
15	18	ASSOCIATED CONSTRUCTION AND ENGINEERING INC.	89.7	+80
16	16	AREA ERECTORS INC.	84.1	+53
17	**	JUNIOR STEEL CO.	79.0	NA
18	**	API GROUP	70.2	+207
19	15	SOWLES CO.	62.9	-12
20	**	EXTREME STEEL INC.	61.0	+54

NA=NOT AVAILABLE. ** =NOT PREVIOUSLY RANKED.

cant decrease is oil and gas, which fell 6.3%.

In September, Centuri Holdings Inc.'s separation from its parent company, Southwest Gas Holdings, allowed the ranked No. 14 specialty contractor to build out more resources in its key markets.

“For our customers, this means working as one team across our operating companies with union and non-union workforces and the full-spectrum of gas and electric infrastructure services,” says President and CEO Christian Brown. “With this independence, we begin a new chapter as a standalone public company with strong business fundamentals and abundant opportunities in our core gas and electric end markets.”

Overall, median revenue on the 2025 Top 600 list came in at \$128.1 million, up 8.3% from \$118.3 million last year. Median new contracts also rose 5.9% to \$121.5 million, with median revenue for concrete subs increasing 19.5% on this year's survey over the 2024 report.

With economists seemingly at odds over when a recession could hit the economy, Clark Bros. Inc. President and CEO Lawrence Clark says some of its “primary challenges” have been in building client confidence to launch projects.

“There has been an overall reluctance to fully commit to projects because of the policy changes that have been looming,” says Clark of the No. 249-ranked heavy civil contractor's work across sectors. “Our goal is to diversify our scope of services and continue to provide creativity in our approach to the mar-

THE TOP 20 FIRMS IN GLAZING AND CURTAIN WALL

RANK	RANK	FIRM	(\$ MIL.)	% CHANGE
2025	2024		2024 REV.	'23-'24
1	1	HARMON INC.	419.9	+11
2	2	NEW HUDSON FACADES	266.0	-3
3	5	W&W GLASS	205.0	+3
4	6	FLYNN GROUP OF COS.	199.9	+14
5	4	CROWN CORR INC.	198.0	-1
6	3	REFLECTION WINDOW + WALL	193.0	-8
7	8	MASSEY'S PLATE GLASS & ALUMINUM INC	127.0	+2
8	7	ARCHITECTURAL GLASS & ALUMINUM	122.5	-16
9	9	VENTANA	102.3	0
10	13	PIONEER CLADDING & GLAZING SYSTEMS	88.5	+48
11	15	ARCHITECTURAL WALL SYSTEMS LLC	79.4	+64
12	**	SPS CORP.	60.3	NA
13	12	EASTERN COS.	49.0	-27
14	17	AJAY GLASS CO.	41.6	+14
15	**	ARAGON CONSTRUCTION	39.4	NA
16	14	NATIONAL ENCLOSURE CO.	34.4	-31
17	19	KOVACH ENCLOSURE SYSTEM	33.4	+14
18	**	M. G. MCGRATH INC.	33.3	NA
19	16	TSI CORPS.	32.7	-12
20	**	ADVANCED EXTERIORS & GLAZING OF NE	32.0	+33

NA=NOT AVAILABLE. ** =NOT PREVIOUSLY RANKED.

THE TOP 20 FIRMS IN MASONRY

RANK	RANK	FIRM	(\$ MIL.)	% CHANGE
2025	2024		2024 REV.	'23-'24
1	3	SUN VALLEY MASONRY INC.	114.1	+19
2	1	WESTERN SPECIALTY CONTRACTORS	112.5	-7
3	4	IMS MASONRY INC.	109.3	+18
4	2	NORTHLAND CONCRETE & MASONRY CO. LLC	79.1	-19
5	5	J&E COMPANIES	71.0	-9
6	7	BRAZOS MASONRY	68.5	+10
7	6	TELLIGENT MASONRY LLC	59.8	-16
8	9	OTTO BAUM CO. INC.	55.5	+22
9	10	MID-CONTINENTAL RESTORATION CO. INC.	42.8	+4
10	11	THE WITMER GROUP	39.1	+24
11	12	JOHN SMITH MASONRY	31.3	+1
12	13	BRODIE CONTRACTORS INC.	28.6	+6
13	16	DEE BROWN INC.	27.2	+29
14	8	GREENWOOD INDUSTRIES	25.2	-51
15	18	SUPERIOR MASONRY UNLIMITED INC.	23.2	+19
16	14	MASONRY BUILDERS INC.	23.0	-7
17	17	TRISCO SYSTEMS INC.	21.4	+7
18	**	BUCKEYE CONSTRUCTION AND RESTORATION	12.7	NA
19	19	CAPASSO ENTERPRISES INC.	11.2	-34
20	20	BROWNING CHAPMAN LLC	10.5	-12

NA=NOT AVAILABLE. ** =NOT PREVIOUSLY RANKED.

THE TOP 20 FIRMS IN PAINTING

RANK	RANK	FIRM	(\$ MIL.)	% CHANGE
2025	2024		2024 REV.	'23-'24
1	1	ASRC INDUSTRIAL	356.4	+35
2	**	I&I SOFT CRAFT SOLUTIONS	207.3	NA
3	3	CHERRY COATINGS	202.2	+34
4	7	TERRA MILLENNIUM CORP.	143.3	+100
5	**	BROCK	128.8	NA
6	4	GRAYDAZE CONTRACTING INC.	110.5	-6
7	2	HARTMAN WALSH PAINTING CO.	106.0	-35
8	**	ASCHER BROTHERS CO. INC.	78.6	NA
9	6	HARRISON CONTRACTING	69.8	-7
10	5	AVALOTIS CORP.	65.0	-14
11	9	VALDEZ PAINTING INC.	58.7	+6
12	8	THOMAS INDUSTRIAL COATINGS INC.	57.5	-5
13	17	KC PAINTING & COATINGS	41.0	+27
14	15	NATIONAL COATINGS INC.	38.7	+11
15	10	APEX IMAGING SERVICES	38.4	-17
16	13	SWANSON & YOUNGDALE	38.0	+1
17	11	PENINGTON PAINTING CO.	34.5	-24
18	19	CERTIFIED COATINGS CO.	34.0	+14
19	16	JERRY THOMPSON & SONS	32.3	-4
20	14	SELECT PAINT & FINISHES LLC	30.0	-19

NA=NOT AVAILABLE. ** =NOT PREVIOUSLY RANKED.

THE TOP 20 FIRMS IN FIRE PROTECTION AND SPRINKLERS

RANK	RANK	FIRM	(\$ MIL.)	% CHANGE
2025	2024		2024 REV.	'23-'24
1	1	API GROUP	3,509.0	+8
2	2	EMCOR GROUP INC.	1,602.3	+6
3	3	J. F. AHERN CO.	286.2	+13
4	5	SENTINEL SAFETY & SECURITY GROUP LLC	120.9	+12
5	**	WOLVERINE FIRE PROTECTION CO.	60.5	NA
6	7	HILL FIRE PROTECTION LLC	57.5	+6
7	10	EQUANS	52.1	+12
8	8	JOHN E. GREEN CO.	48.5	-7
9	9	MCKINSTRY	44.0	-12
10	6	EVERUS CONSTRUCTION GROUP	42.7	-38
11	12	HAMPSHIRE FIRE PROTECTION CO.	34.5	+11
12	13	E.M. DUGGAN INC.	28.7	-7
13	**	KE GUTRIDGE LLC	18.4	NA
14	**	DORVIN D. LEIS CO. INC.	16.1	NA
15	16	THE PIPCO COS. LTD.	15.0	-3
16	17	ALLIED FIRE & SAFETY EQUIPMENT CO. INC.	13.5	+29
17	**	THOMPSON SOLUTIONS GROUP	7.9	NA
18	**	ISC CONSTRUCTORS LLC	5.5	NA
19	**	PAN-PACIFIC MECHANICAL LLC	5.1	+38
20	**	WYATT INC.	5.1	NA

NA=NOT AVAILABLE. ** =NOT PREVIOUSLY RANKED.

THE TOP 20 FIRMS IN WALL AND CEILING

RANK	RANK	FIRM	(\$ MIL.)	% CHANGE
2025	2024		2024 REV.	'23-'24
1	1	PERFORMANCE CONTRACTING GROUP INC.	2,400.5	+20
2	3	WESTERN PARTITIONS INC.	430.0	+5
3	2	PRECISION WALLS INC.	408.0	-3
4	9	NEVELL GROUP INC.	377.2	+49
5	6	NATIONAL CONSTRUCTION ENTERPRISES INC.	336.3	+15
6	8	STANDARD DRYWALL INC.	312.8	+22
7	**	ATKORE/UNISTRUT CONSTRUCTION	274.9	+182
8	11	BAKER TRIANGLE	271.2	+8
9	7	PAUL JOHNSON DRYWALL	229.7	-19
10	4	THE RAYMOND GROUP	222.6	-34
11	10	ACOUSTI ENGINEERING CO. OF FLORIDA	219.1	-13
12	12	GREATER METROPLEX INTERIORS	210.6	+7
13	**	KHS&S CONTRACTORS - EAST	153.7	NA
14	14	F.L. CRANE & SONS INC.	153.7	+5
15	16	MIDWEST DRYWALL CO. INC.	148.1	+12
16	15	TJ WIES CONTRACTING INC.	140.2	+2
17	19	NEW ENGLAND FINISH SYSTEMS	126.5	+9
18	**	THORNE ASSOCIATES INC.	126.3	+59
19	18	DALEY'S DRYWALL	115.8	-1
20	20	PDM CONSTRUCTORS INC.	111.7	-1

NA=NOT AVAILABLE. ** =NOT PREVIOUSLY RANKED.

ket," he adds.

In the mechanical contracting market, SPC Mechanical VP of Estimating/Preconstruction Mark Coleman says the company is seeing cost increases in several key areas due to ongoing market trends.

"Prices for copper piping and wiring remain high due to global demand and limited supply. Carbon steel products, as well as ductwork and supports, have seen increases due to higher raw material costs," says Coleman, adding that prices on chillers, rooftop units and air handlers have increased "primarily due to increased production costs and inflation."

Through proactive planning, strong vendor relationships, and flexible project management, "we continue to meet our commitments to clients while managing risk effectively," says Coleman. The specialty contractor is ranked No. 161.

Charge CEO Mike Robirds adds, "In today's construction market, resilience is no longer a nice-to-have, it's a core strategy that allows us to thrive in an ever-changing environment."

Investing in Technology

For many Top 600 specialty contractors, a boom of contracting work tied to data center needs has also jumpstarted their company's technology needs, with many firms reporting that they have accelerated the integration of tech such as artificial intelligence and collaborative software to help keep up with their workflows.

THE TOP 20 FIRMS IN UTILITY

RANK	RANK	FIRM	(\$ MIL.)	% CHANGE
2025	2024		2024 REV.	'23-'24
1	1	QUANTA SERVICES	11,836.4	+7
2	**	PIKE CORP.	2,918.0	NA
3	3	PRIMORIS SERVICES CORP.	2,344.9	-1
4	2	CENTURI HOLDINGS INC.	2,241.6	-9
5	4	ARTERA SERVICES	2,186.8	-1
6	7	EVERUS CONSTRUCTION GROUP	775.1	+18
7	9	NEW RIVER ELECTRICAL CORP.	771.0	+27
8	6	CONGRUEX	668.3	0
9	5	API GROUP	631.6	-19
10	10	DANELLA	410.0	-4
11	12	WEST VALLEY CONSTRUCTION	312.7	+5
12	19	BOND CIVIL & UTILITY CONSTRUCTION INC.	239.7	+43
13	14	W.A. RASIC CONSTRUCTION CO. INC.	239.0	+1
14	**	MCKEE UTILITY CONTRACTORS LLC	194.4	NA
15	15	CHARGE	188.8	-7
16	16	KIELY FAMILY OF COS.	187.4	-8
17	18	C.A.C. INDUSTRIES INC.	176.3	-6
18	**	MOSS UTILITIES	160.0	+25
19	**	KEELEY CONSTRUCTION GROUP	152.3	+34
20	**	CLEARY CONSTRUCTION INC.	126.1	-5

NA=NOT AVAILABLE. ** =NOT PREVIOUSLY RANKED.

The Top 600 Dialogue

How do you expect shifting federal immigration policies and mass deportations to impact your company?

#194

on the
Top 600 List

BO MUN, SR. BUSINESS DEVELOPMENT MGR.
EASTERN COS.
John's Creek, Ga.

"While we anticipate some degree of labor shortage in the short term, we view the long-term outlook as an opportunity to strengthen and stabilize the domestic workforce. Like two sides of the same coin, such policies bring positive and negative aspects."

#241

on the
Top 600 List

MIKE ROBIRDS, CEO
CHARGE
Sacramento, Calif.

"While recent federal immigration policies and deportation actions have not directly affected our employees, the broader impact is felt across our workforce. Our team members have friends or family members who may be at risk."

What new developments at your company do you consider to be game-changers?

#244

on the
Top 600 List

DAN BRYANT, VICE PRESIDENT
CLEARY CONSTRUCTION INC.
Tompkinsville, Ky.

"The opening of our asphalt plant and the purchase of a rock quarry is transforming how we position the company for long-term success. These investments in our ability to deliver complete packages are redefining how we compete and build for the future."

#37

on the
Top 600 List

STEVE ENNIS, PRESIDENT AND CEO
ASRC INDUSTRIAL
Tempe, Ariz.

"One of the most transformative developments at our company has been integration of advanced data analytics and machine learning into our project management processes. We've significantly enhanced our ability to predict project outcomes."

THE TOP 20 FIRMS IN CONCRETE

RANK 2025	2024	FIRM	(\$ MIL.)	% CHANGE
			2024 REV.	'23-'24
1	1	BAKER CONSTRUCTION ENTERPRISES INC.	2,400.0	+4
2	2	LITHKO CONTRACTING	1,750.0	+1
3	3	SUNTEC CONCRETE INC.	943.6	+4
4	4	STRUCTURAL GROUP	920.0	+12
5	6	LARGO CONCRETE	870.5	+20
6	5	KENT COS.	791.5	-4
7	8	KEYSTONE CONCRETE	560.0	+9
8	7	CONCRETE STRATEGIES	543.6	+4
9	9	CECO CONSTRUCTION GROUP	444.6	-8
10	17	BOMEL CONSTRUCTION CO. INC.	339.0	+48
11	**	STERLING INFRASTRUCTURE INC.	338.5	NA
12	12	FESSLER & BOWMAN INC.	302.5	-4
13	13	MARTIN CONCRETE CONSTRUCTION	281.0	-5
14	11	ORION CONCRETE	275.1	-13
15	15	CAPFORM INC.	270.0	+4
16	14	PRECISION CONCRETE CONSTRUCTION INC.	247.9	-5
17	16	MILLER SIERRA CONTRACTORS	243.5	+1
18	10	PACIFIC STRUCTURES INC.	224.1	-30
19	19	S&F CONCRETE CONTRACTORS CORP.	222.9	+17
20	**	DONLEY COS.	198.6	+19

NA=NOT AVAILABLE. ** =NOT PREVIOUSLY RANKED.

THE TOP 20 FIRMS IN EXCAVATION

RANK 2025	2024	FIRM	(\$ MIL.)	% CHANGE
			2024 REV.	'23-'24
1	**	STERLING INFRASTRUCTURE INC.	930.9	NA
2	1	PLATEAU EXCAVATION INC.	602.1	+4
3	2	BEAVER EXCAVATING CO.	392.7	+24
4	3	DRILL TECH DRILLING & SHORING INC.	315.8	+2
5	8	MANAFORT BROTHERS INC.	310.1	+41
6	5	RYAN INC. CENTRAL	301.2	+15
7	6	INDEPENDENCE EXCAVATING	288.2	+10
8	14	LANDMARK CONSTRUCTION CO.	266.2	+103
9	4	KELLER NORTH AMERICA	235.4	-11
10	**	EUTAW CONSTRUCTION CO INC.	218.0	NA
11	10	VEIT & CO. INC.	179.7	+10
12	11	EDGERTON CONTRACTORS INC.	146.1	-1
13	**	STRACK INC.	143.5	NA
14	16	BOND CIVIL & UTILITY CONSTRUCTION INC.	141.8	+23
15	15	W. L. FRENCH EXCAVATING CORP.	140.3	+8
16	13	RACHEL CONTRACTING	139.0	-4
17	**	FIVE-S GROUP	137.2	+208
18	9	ASRC INDUSTRIAL	132.0	-29
19	**	PETILLO COS.	125.9	+137
20	12	PRIMORIS SERVICES CORP.	102.5	-29

NA=NOT AVAILABLE. ** =NOT PREVIOUSLY RANKED.

Data published by McKinsey & Company in August found that artificial intelligence training models have been the primary driver of increased data center needs in the United States.

In order to deliver the required data center infrastructure, the global management consulting firm estimates that the U.S. will need to more than triple its annual power capacity over the next five years—“from 25 GW of demand in 2024 to more than 80 GW in 2030.” The firm adds, “Worldwide demand is expected to be about 220 GW by 2030.”

However, the firm expects the data centers of the future to also evolve with refinement into “hybrid facilities that host a mix of training, inferencing and cloud workloads, and their scale and size will surpass those of facilities that were considered large even two years ago.”

At SDB Inc., Business Solutions Director Brad Thompson says the No. 247-ranked specialty contractor doesn’t “chase technology because it’s flashy or new.” He says, “We build our technology stack around our workflows.”

When it comes to artificial intelligence, “AI has become a connector, helping bridge information gaps that used to require more hands-on effort or extra hours,” Thompson says. “Whether in the office or the field, automation speeds up routine tasks and keeps our teams aligned. Our goal is not replacing collaboration but instead about making it more efficient and more accurate.”

For O’Connell Electric Company, ranked No. 155, its technology investments have been focused on “value,” says Presi-

THE TOP 20 FIRMS IN ROOFING

RANK 2025	2024	FIRM	(\$ MIL.)	% CHANGE
			2024 REV.	'23-'24W
1	1	TECTA AMERICA	1,500.0	+12
2	2	CENTIMARK CORP.	1,265.1	+5
3	3	FLYNN GROUP OF COS.	621.2	+9
4	5	BAKER ROOFING CO.	329.7	+3
5	6	GREENWOOD INDUSTRIES	186.4	-4
6	7	O'HARA'S SON ROOFING (OSR)	163.5	+18
7	11	KALKREUTH ROOFING AND SHEET METAL	154.0	+87
8	8	ADVANCED ROOFING	135.4	+42
9	13	DOUGLASS COLONY GROUP	72.7	+9
10	15	COMMERCIAL ROOFERS INC.	59.6	+7
11	16	ROOFED RIGHT AMERICA	58.3	+6
12	**	CP RANKIN	54.2	NA
13	17	E. CORNELL MALONE CORP.	41.7	-24
14	19	WAYNE'S ROOFING INC.	41.3	-2
15	**	WESTERN SPECIALTY CONTRACTORS	36.5	+62
16	**	RADCO ROOFING	30.3	NA
17	**	JOHN J. CAMPBELL CO. INC.	29.9	NA
18	20	ALL-SOUTH SUBCONTRACTORS INC.	28.8	-23
19	**	EASTERN COS.	24.5	-27
20	**	API GROUP	17.5	-26

NA=NOT AVAILABLE. ** =NOT PREVIOUSLY RANKED.

dent and COO Michael Parkes, “which could be numerous things beyond just labor and cost savings.”

As more specialty contractors find their footing with technology integration, “there will always be challenges,” says Parkes. Where O’Connell Electric Company has found success against such challenges has been in identifying an internal technology and subject matter expert who can lead company-wide trainings and implementation. This expert is also deputized to “continue to be there for our employees to answer questions, host regular user group meetings and keep users informed of changes and updates,” Parkes says.

As building information modeling has become standard across the industry, Nox Group says it is investing in a level of information detail that models down to the “bolt and nut” to increase collaboration and reduce risks.

“This is a new level of precision modeling we’ve employed to strengthen shop-to-field collaboration, boost safety on site and ensure efficiency for our workforce as we navigate both labor shortages and higher demand for industrial infrastructure,” says CEO Justin



“AI has become a connector, helping bridge information gaps that used to require more hands-on effort or extra hours.”

Brad Thompson, Director, SDB Inc.

Martin. “Detailed models feed directly into hazard analysis and phasing, allowing us to anticipate conditions before crews arrive.”

He adds, “In some cases, drone scans and digital surveys help us reduce or even eliminate confined space entries, minimizing exposure to unnecessary risks.” The specialty contractor is ranked No. 103.

Lithko Contracting CEO Rob Strobel adds that a single “source of truth” for design and drawings is “critical” to keep all trade partners in the value chain on the same page.

THE TOP 10 DEEP FOUNDATIONS FIRMS

RANK	RANK	FIRM	(\$ MIL.)	% CHANGE
2025	2024		2024 REV.	'23-'24
1	1	KELLER NORTH AMERICA	1,652.6	+16
2	2	MALCOLM DRILLING CO. INC.	788.5	-2
3	3	BERKEL	370.6	-31
4	6	MENARD	307.6	+23
5	7	RICHARD GOETTLE INC.	293.0	+37
6	5	CONDON-JOHNSON & ASSOCIATES INC.	282.0	+13
7	4	MORRIS-SHEA BRIDGE CO. INC.	198.7	-48
8	**	KEELEY CONSTRUCTION GROUP	121.8	NA
9	**	ASRC INDUSTRIAL	112.2	NA
10	9	BAUER FOUNDATION CORP.	103.6	+41

NA=NOT AVAILABLE. ** =NOT PREVIOUSLY RANKED.

THE TOP 10 INTERIOR/MILLWORK FIRMS

RANK	RANK	FIRM	(\$ MIL.)	% CHANGE
2025	2024		2024 REV.	'23-'24
1	1	ISEC INC.	462.1	+108
2	**	ASRC INDUSTRIAL	119.9	NA
3	4	WYATT INC.	40.8	-7
4	7	APEX IMAGING SERVICES	38.4	+108
5	**	REIDY CONTRACTING GROUP	31.5	NA
6	2	KEELEY CONSTRUCTION GROUP	30.5	-64
7	**	PI CONSTRUCTION LLC	25.1	NA
8	**	BROCK	24.7	NA
9	6	GROUP BUILDERS INC.	21.8	-18
10	8	CERTIFIED INTERIORS INC.	20.9	+124

NA=NOT AVAILABLE. ** =NOT PREVIOUSLY RANKED.

THE TOP 10 MBE CERTIFIED FIRMS

RANK	RANK	FIRM	(\$ MIL.)	% CHANGE
2025	2024		2024 REV.	'23-'24
1	2	APOLLO SHEET METAL INC.	1,200.0	+26
2	1	ASRC INDUSTRIAL	1,100.0	-6
3	6	EASTERN COS.	245.0	+10
4	5	MILLER SIERRA CONTRACTORS	243.5	+1
5	8	CHERRY COATINGS	202.2	+34
6	7	REFLECTION WINDOW + WALL	193.0	-8
7	9	ACS SYSTEM	130.0	+13
8	**	BERMUDEZ LONGO DIAZ-MASSO LLC	122.0	+12
9	**	OPTILINE ENTERPRISES	113.6	+23
10	**	AMERICAN PILE AND FOUNDATION LLC	99.6	-5

NA=NOT AVAILABLE. ** =NOT PREVIOUSLY RANKED.

THE TOP 10 WBE CERTIFIED FIRMS

RANK	RANK	FIRM	(\$ MIL.)	% CHANGE
2025	2024		2024 REV.	'23-'24
1	2	THE RAYMOND GROUP	222.6	-34
2	4	APEX IMAGING SERVICES	192.0	+4
3	6	ROYAL ELECTRIC CO.	187.8	+37
4	5	SDB INC.	183.7	0
*	**	W.G. TOMKO INC.	163.3	NA
6	**	DALEY'S DRYWALL	115.8	NA
7	**	REIDY CONTRACTING GROUP	103.5	NA
8	**	OWEN STEEL COMPANY INC.	93.2	NA
9	7	SIERRA PACIFIC WEST INC.	86.7	-17
10	8	INTERNATIONAL ASBESTOS REMOVAL INC.	82.4	-21

NA=NOT AVAILABLE. ** =NOT PREVIOUSLY RANKED.

* THE FIRM QUALIFIES FOR WBE AND IS IN THE PROCESS OF OBTAINING THEIR WBE CERTIFICATION, BUT IS NOT YET CERTIFIED.

Technology | By Jonathan Keller

Robots Help ASRC Industrial Find Unexploded Ordnance



Tyler Wilson, (left) system developer of the robotics program at ASRC Industrial (No. 37), remotely searches for unexploded ordnance at a former U.S. Navy bombing range on the island of Vieques in Puerto Rico that the industrial services specialty firm is restoring. The training site was in operation for 60 years before the George W. Bush administration closed it in 2001. The project is part of a long term effort to reopen local beaches and turn the area into a wildlife preserve with walking trails. Project scope, which includes excavation and demilling of unexploded ordnance and target removal, involves use of dive teams for underwater operations.

“BIM modeling (3D, 4D) offers huge opportunities. Paper drawings become outdated the moment they’re printed,” says Strobel. “With technology, everyone can input updates in real time, ensuring accurate line and grade information for formwork, engineering and suppliers. Full industry adoption of live models like Revit would allow everyone to build from the same constantly updated source.”

Ranked No. 25, Strobel says the company has also integrated artificial intelligence into its workflow to fortify its “data quality” and help improve its business operations.

“As we grow across 30-plus cities, we lose the ‘voltage’ of close-knit knowledge sharing,” says Strobel. “AI can help keep that voltage high by capturing and distributing knowledge across regions, proactively sourcing answers, housing best feedback and presenting solutions to improve performance and speed growth.”

Choosing the Right Partners

As much as technology integration can harvest data to help reduce some project risks, Top 600 firms say

choosing the right trade partners goes a long way in increasing project success.

“For the last 65 years, we have partnered with a variety of clients, general contractors and subcontractors to create projects that transform the built environment,” says Matt Allen, executive vice president and chief client officer at McKinstry, ranked No. 36.

He adds, “When we look at who we partner with, we work diligently to understand the exact wants and needs of their project and facilities. Along with this, we consider long-term service and cost needs to guarantee that if we work together, what we provide will align with their needs. For our team members, building a relationship with a potential client is about collaboration, understanding and honesty.”

Helm Group CEO Brian Helm adds, “With the nature of most projects right now, both GCs and subs realize that the relationship needs to be win-win.” Helm says the ranked No. 68 specialty contractor has made a habit of checking references for its new general contractors. “Do as much financial due diligence on them as they do on us,” he says.

At Greenwood Industries, ranked No. 190, Vice President of Private Estimating Matthew Tessier says the specialty contractor follows similar due diligence.

“Before we work with a new GC, we reach out to our contacts in the industry—other roofers, vendors, and GCs—because it doesn’t take long for a company to build a reputation,” he says.

“At the end of the day, relationships are built on performance,” Tessier adds. “The stronger you deliver on a project, from estimating through closeout, the more likely you are to be invited back and short-listed for the next one.”

Overall, for specialty contractors, Harris CEO Michel Michno says the contract negotiation process is a “huge indicator” of whether a potential partner will be a “good fit.” The Saint Paul, Minn.-based specialty firm is ranked No. 41 this year.

“You learn a lot during the give and take from those discussions to assess whether this will be a culture fit for both organizations,” says Michno. “You learn how another organization behaves and whether their priorities and values are aligned with your own.”

Contracting Gamechangers

In addition to market ups and downs, managing labor resources and technology adoption, Top 600 specialty contractors have also celebrated myriad achievements that they say have been “game-changers” for their companies.

“With all cyclical demand in markets, when some are off, some are on fire. Despite these cycles, we have managed to keep the business consistently on track, and still need to be prepared for growth and scaling as multiple cycles get in sync with each other,” says Seth L. Pearlman, North America chairman of Menard, ranked No. 156.

If anything, “The last three years have exposed how fragile the industry’s supply chain really is,” says Joe Micallef, COO at Power Design, ranked No. 31.

In order to manage more control and consistency over switchboards and critical power supply, the company built LFG, its switchboard and critical power manufacturing business.

“By building switchboards in-house, we’ve created a model our partners can trust: consistent 20-week lead times, with the ability to accelerate to just six weeks

On the Web

For expanded content on ENR’s Top Lists, see ENR.com/toplists.



CELEBRATING 40 YEARS OF SITE DEVELOPMENT THROUGHOUT THE SOUTHEAST

www.brent.us • 770.461.8603 • 45 E. Aviation Way, Newnan • GA 30263

Business Enterprises | By Emell Adolphus

US Army Vet Cements New Career Path

Evans Contracting Group (**No. 558**) President Jack Evans, 29, says the “grit” of his background in the armed services is reflected in the Charleston, S.C.-based concrete contractor’s steady expansion since its founding in 2022. “Our motto is: ‘Where grit meets opportunity,’ and that is something that the company is defined by.”

After an injury forced Evans to medically retire from active U.S. Army service, he says he felt lost until an internship with a heavy civil contractor through the U.S. Special Operations Command’s Warrior Care Program pointed him to the skilled trades and sparked the drive to be able to work with his hands.

“There are a lot of military occupational specialty skills that don’t necessarily translate to the civilian sector,” says Evans. “Being able to go home at the end of the day and seeing what you did really gave a self-rewarding feeling.” With a second office in Chattanooga, Tenn., he helps other veterans “build better” and develop their post-service lives through jobsite experience as a registered disabled veteran business enterprise certified with the U.S. Dept. of Veterans Affairs.

“We are still a very small contractor with a large vision,” says Evans, adding that the firm employs about 200 craftworkers on jobsites ranging from wastewater treatment plants to multifamily developments. He adds, “We started out small, one job at a time.”

Serving as vice president, Evans’ brother JP Evans says the contractor’s relationship building has also been a key driver of its success. “It’s all relationships. Every project we are doing is with customers that we’ve done multiple projects with,” he says. “The way we view it, [contracting] is a long-term relationship, and we are going to be doing it for a very long time. Our goal is to build an organization that our family can be in for a long time and that people who are working with us can be with us for a long time.”

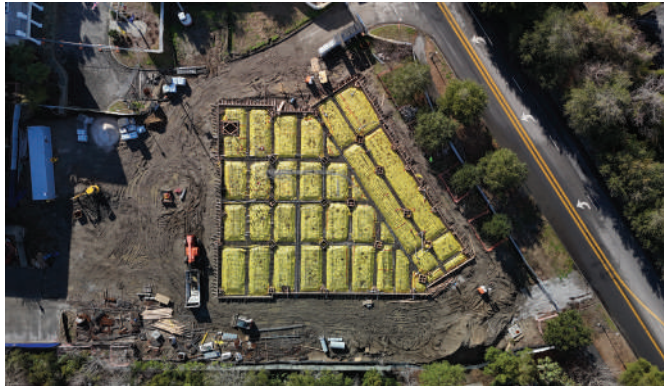
He adds, “With our business, we are only as good as the people that we have.”

when schedules demand it,” says Micallef. “It’s more than speed, it’s about delivering confidence, quality and beating schedule expectations.”

At National Construction Enterprises Inc., ranked No. 144, Pino Mancina says bringing in guest speakers to talk about safety has proven to be a small change with a big payoff. “The guest speakers seem to be able to deliver the message clearly and directly,” says Mancina.

As specialty contracting work continues to evolve, so must the industry’s approach to work and safety, says Michael McCann, president and CEO at Limbach Facility Services, ranked No. 89. McCann says the company’s Hearts and Minds Safety Program has also been a game-changer for jobsite safety, with an added focus on mental health care.

“The challenges we face today are different from those of five years ago, making it essential for our safety practices to adapt,” says McCann. “This isn’t just about rules, it’s about building a culture of care that protects the whole person. That shift is strengthening both our people and our performance.” ■



SETUP Evans Contracting Group gears up to pour a 650-cu-yd slab at Mediterranean Shipping Co. headquarters in Mount Pleasant, S.C.



TEAM BUILDING Evans Contracting Group Vice President JP Evans (right) and President Jack Evans (center right) say relationship building has been key to growth of its portfolio and workforce.

How To Read the Tables

KEY TO TYPE OF FIRM

A=asbestos abatement; **C**=concrete; **D**=demolition/wrecking; **E**=electrical; **F**=fire protection and sprinklers; **FN**=deep foundations; **G**=glazing/curtain wall; **I**=interior/millwork; **M**=mechanical; **MA**=masonry; **O**=other; **P**=painting; **R**=roofing; **SH**=sheet metal; **ST**=steel; **U**=utility; **W**=wall/ceiling; **X**=excavation/grading/site work.

Companies are ranked according to construction revenue in 2024 in (\$) millions from specialty contracting in a prime or subcontracting

capacity. Firms that were not ranked last year are designated by double asterisks (**). New contract awards refer to contracts awarded in 2023. **NA**=not available.

General Building as a category includes commercial buildings, offices, stores, educational facilities, government buildings, hospitals, medical facilities, hotels, apartments, housing, etc.

Hazardous Waste includes chemical and nuclear waste treatment, asbestos and lead abatement, etc.

Industrial Process includes pulp and paper mills, steel mills, nonferrous metal refineries, pharmaceutical plants, chemical plants, food and other processing plants, etc.

Manufacturing includes auto, electronic assembly, textile plants, etc.

Petroleum includes refineries, petrochemical plants, offshore facilities, pipelines, etc.

Power includes thermal and hydroelectric power plants, waste-to-energy plants, transmission lines, substations, cogeneration plants, etc.

Sewerage/Solid Waste includes sanitary

and storm sewers, treatment plants, pumping plants, incinerators, industrial waste facilities, etc.

Telecommunications includes transmission lines and cabling, towers and antennae, data centers, etc.

Transportation includes airports, bridges, roads, canals, locks, dredging, marine facilities, piers, railroads, tunnels, etc.

Water Supply includes dams, reservoirs, transmission pipelines, distribution mains, irrigation canals, desalination and potability treatment plants, pumping stations, etc.

FOOTNOTES: 1 = NOT REPORTED; 2 = BUILDING AND INDUSTRIAL SERVICE AND MAINTENANCE; 3 = INSULATION, SCAFFOLDING, COMMERCIAL CONSTRUCTION, OIL & GAS PIPELINE, STEEL FABRICATION, GARAGE DOOR INSTALLATION & SERVICE; 4 = NOT REPORTED; 5 = INSULATION & MARINE; 6 = NOT REPORTED; 7 = INSULATION & MARINE; 8 = NOT REPORTED; 9 = NOT REPORTED; 10 = NOT REPORTED; 11 = CUSTOM ENGINEERED SOLUTIONS & INDUSTRIAL SERVICES; 12 = NOT REPORTED; 13 = CONSTRUCTION PRODUCTS; 14 = NOT REPORTED; 15 = TELECOM, WATER, CIVIL; 16 = GENERAL CONTRACTING; 17 = GENERAL CONTRACTING; 18 = CONSTRUCTION PRODUCTS; 19 = TELECOM, WATER, CIVIL; 20 = GENERAL CONTRACTING; 21 = GENERAL CONTRACTING; 22 = GENERAL CONTRACTING; 23 = GENERAL CONTRACTING; 24 = SCAFFOLDING AND INSULATION; 25 = COMMERCIAL FLOORING; 26 = SERVICE, SOLAR, INDUSTRIAL; 27 = SERVICE, SOLAR, INDUSTRIAL; 28 = ENERGY ENGINEERING, ECODISTRICT, ARCHITECTURAL METALS, FACILITY MAINTENANCE, ETC.; 29 = SPECIALTY SERVICES; 30 = NOT REPORTED; 31 = NOT REPORTED; 32 = NOT REPORTED; 33 = NOT REPORTED; 34 = NOT REPORTED; 35 = NOT REPORTED; 36 = NOT REPORTED; 37 = NOT REPORTED; 38 = NOT REPORTED; 39 = NOT REPORTED; 40 = NOT REPORTED; 41 = NOT REPORTED; 42 = NOT REPORTED; 43 = NOT REPORTED; 44 = NOT REPORTED; 45 = NOT REPORTED; 46 = NOT REPORTED; 47 = NOT REPORTED; 48 = NOT REPORTED; 49 = NOT REPORTED; 50 = SITE ENVIRONMENTAL AND COAL-ASH REMEDIATION.

RANK 2025	RANK 2024	FIRM	FIRM TYPE	2024 REVENUE (\$ MIL)		MARKETS (% OF 2024 REVENUE)									
				TOTAL REVENUE	NEW CONTRACTS	GENERAL BUILDING	MANUFACTURING	POWER	WATER SUPPLY	SEWER / WASTE	INDUS. / PETROLEUM	TRANSPORTATION	HAZARDOUS WASTE	TELECOM	
1	1	QUANTA SERVICES, Houston, Texas ¹	E/U	23,672.8	34,538.8	0	0	80	0	0	9	0	0	5	
2	2	EMCOR GROUP INC., Norwalk, Conn. ²	M/E	14,566.1	15,820.9	43	22	2	0	3	10	2	0	18	
3	3	API GROUP, New Brighton, Minn. ³	F/O	7,018.0	7,472.0	53	9	4	2	1	8	8	0	6	
4	4	PRIMORIS SERVICES CORP., Dallas, Texas ⁴	U/O	6,366.8	NA	0	0	37	0	0	16	9	0	6	
5	6	COMFORT SYSTEMS USA INC., Houston, Texas	M	5,929.6	6,766.2	40	27	0	0	0	0	0	0	33	
6	5	BRANDSAFWAY, Atlanta, Ga. ⁵	O	4,994.9	NA	0	0	0	0	0	0	0	0	0	
7	10	ROSENDIN ELECTRIC, San Jose, Calif.	E	3,700.0	5,126.0	6	0	3	0	0	0	5	0	49	
8	7	MYR GROUP INC., Thornton, Colo.	E	3,360.0	NA	0	0	0	0	0	0	0	0	0	
9	12	PERFORMANCE CONTRACTING GROUP INC., Lenexa, Kan. ⁹	W	3,095.4	2,925.4	47	41	4	0	0	3	4	0	0	
10	11	PIKE CORP., Charlotte, N.C.	U	2,918.0	NA	0	0	100	0	0	0	0	0	0	
11	13	IES HOLDINGS INC., Sugar Land, Texas ¹¹	E	2,884.4	NA	61	12	0	0	0	0	0	0	27	
12	9	EVERUS CONSTRUCTION GROUP, Bismarck, N.D. ¹²	E/U	2,849.7	3,619.4	69	0	27	0	0	1	0	0	0	
13	18	SOUTHLAND INDUSTRIES, Garden Grove, Calif.	M	2,841.4	3,392.1	39	23	1	0	0	0	2	0	35	
14	8	CENTURI HOLDINGS INC., Phoenix, Ariz. ¹⁴	U	2,637.2	1,111.7	0	0	45	0	0	55	0	0	0	
15	15	BAKER CONSTRUCTION ENTERPRISES INC., Monroe, Ohio	C	2,400.0	2,650.0	62	13	13	0	5	0	5	0	2	
16	25	MMR GROUP, Baton Rouge, La.	E	2,331.4	1,718.0	0	20	5	0	0	34	0	0	41	
17	16	STEELFAB INC., Charlotte, N.C.	ST	2,304.8	2,209.1	30	10	0	0	0	0	5	0	55	
18	17	KELLER NORTH AMERICA, Hanover, Md. ¹⁸	FN	2,285.8	2,405.0	54	13	7	4	1	7	14	0	1	
19	14	ARTERA SERVICES, Atlanta, Ga. ¹⁹	U	2,254.5	1,274.8	0	0	0	1	0	99	0	0	0	
20	19	ACCO ENGINEERED SYSTEMS, Pasadena, Calif.	M	2,152.1	1,959.0	100	0	0	0	0	0	0	0	0	
21	**	STERLING INFRASTRUCTURE INC., The Woodlands, Texas ²¹	X/O	2,115.8	1,637.9	63	0	0	0	0	0	37	0	0	
22	21	M.C. DEAN, Tysons, Va.	E	2,026.0	NA	42	8	4	3	3	0	15	0	25	
23	23	EQUANS, New York, N.Y.	M/E	1,817.0	1,900.0	31	37	14	0	2	0	11	0	5	
24	**	BROCK, Houston, Texas ²⁴	O	1,765.0	1,825.0	3	0	5	0	0	89	0	0	0	
25	22	LITHKO CONTRACTING, West Chester, Ohio	C	1,750.0	2,000.0	74	11	0	0	0	0	4	0	11	
26	24	ARCHKEY SOLUTIONS, St. Louis, Mo.	E	1,700.0	2,028.0	20	20	3	0	0	5	2	0	10	
27	53	THE STATE GROUP, Franklin, Tenn.	E	1,667.0	1,201.3	1	70	8	0	1	12	1	0	7	
28	26	TECTA AMERICA, Rosemont, Ill.	R	1,500.0	1,500.0	0	0	0	0	0	0	0	0	0	
29	27	CENTIMARK CORP., Canonsburg, Pa. ²⁹	R	1,402.5	1,434.2	100	0	0	0	0	0	0	0	0	
30	32	FAITH TECHNOLOGIES INC., Menasha, Wis.	E	1,400.0	1,890.0	3	3	1	0	0	5	0	0	88	
31	28	POWER DESIGN, Saint Petersburg, Fla.	E	1,387.3	NA	100	0	0	0	0	0	0	0	0	
32	41	THE E-J GROUP, Long Island City, N.Y.	E	1,360.0	1,358.0	13	6	31	4	7	2	29	0	8	
*33	**	LEGENE, San Jose, Calif.	M	1,300.0	1,700.0	97	3	0	0	0	0	0	0	0	
34	30	FLYNN GROUP OF COS., Kansas City, Mo. ³⁴	R	1,265.1	1,352.3	64	18	0	0	4	2	3	0	9	
35	35	APOLLO SHEET METAL INC., Kennewick, Wash.	M	1,200.0	1,200.0	40	15	0	0	0	15	0	0	0	
36	34	MCKINSTRY, Seattle, Wash. ³⁶	M/O	1,100.0	NA	0	0	0	0	0	0	0	0	0	
37	31	ASRC INDUSTRIAL, Tempe, Ariz. ³⁷	P	1,100.0	1,333.4	11	13	11	5	4	18	10	28	0	
38	50	MOTOR CITY ELECTRIC CO., Detroit, Mich.	E	1,093.0	665.6	0	0	0	0	0	0	0	0	0	
39	37	CACHE VALLEY ELECTRIC CO., Logan, Utah	E	1,079.5	1,140.0	7	4	19	0	2	15	9	0	44	
40	33	LEXICON INC., Little Rock, Ark. ⁴⁰	ST	1,007.0	906.3	2	30	0	0	0	53	0	0	0	
41	36	HARRIS, St. Paul, Minn.	M	994.1	1,581.9	30	35	1	0	0	4	0	0	26	
42	47	ALDRIDGE ELECTRIC INC., Libertyville, Ill.	E	957.6	1,400.0	2	0	35	0	0	0	36	0	27	
43	40	HELIX ELECTRIC, San Diego, Calif.	E	957.0	930.0	55	10	0	0	10	0	0	0	25	
44	39	SUNTEC CONCRETE INC., Phoenix, Ariz.	C	943.6	1,001.2	70	20	0	0	0	0	0	0	10	
45	43	THE NEWTRON GROUP, Baton Rouge, La.	E	933.0	404.0	5	30	10	0	0	35	0	0	20	
46	45	STRUCTURAL GROUP, Columbia, Md.	C	920.0	1,050.0	50	0	12	12	3	13	10	0	0	
47	42	HUNT ELECTRIC CORP., Bloomington, Minn.	E	900.0	1,500.0	10	30	5	0	0	15	5	0	35	
48	60	CERRIS SYSTEMS, Kansas City, Mo.	M	881.0	624.0	76	10	4	0	0	0	0	0	10	
49	54	LARGO CONCRETE, Tustin, Calif.	C	870.5	825.0	100	0	0	0	0	0	0	0	0	
50	38	NORTHSTAR GROUP SERVICES INC., New York, NY ⁵⁰	D/O	848.6	677.0	35	0	58	0	0	7	0	0	0	

* FIRM FILED WITH THEIR NET REVENUE INSTEAD OF GROSS.

RANK 2025	RANK 2024	FIRM	FIRM TYPE	2024 REVENUE (\$ MIL)		MARKETS (% OF 2024 REVENUE)										
				TOTAL REVENUE	NEW CONTRACTS	GENERAL BUILDING	MANUFACTURING	POWER	WATER SUPPLY	SEWER / WASTE	INDUS. / PETROLEUM	TRANSPORTATION	HAZARDOUS WASTE	TELECOM		
51	51	BERGELECTRIC CORP., Carlsbad, Calif.	E	824.6	NA	85	5	0	0	0	0	5	0	0	0	5
52	56	BRIGHTVIEW LANDSCAPE DEVELOPMENT INC., Blue Bell, Pa. ⁵²	O	808.8	NA	70	20	0	0	0	0	0	10	0	0	0
53	52	CECO CONSTRUCTION GROUP, Kansas City, Mo. ⁵³	C/O	808.4	820.1	78	0	0	0	2	20	0	0	0	0	0
54	57	KEYSTONE CONCRETE, Houston, Texas ⁵⁴	C	800.0	450.0	90	10	0	0	0	0	0	0	0	0	0
55	46	KENT COS., Grand Rapids, Mich.	C	791.5	731.1	90	10	0	0	0	0	0	0	0	0	0
56	63	NEW RIVER ELECTRICAL CORP., Roanoke, Va.	U	788.9	1,182.2	0	0	99	0	0	0	0	0	0	0	1
57	48	MALCOLM DRILLING CO. INC., San Francisco, Calif.	FN	788.5	937.0	38	4	0	1	2	0	54	0	0	0	0
58	55	TERRA MILLENNIUM CORP., Salt Lake City, Utah ⁵⁸	O	787.3	833.1	0	11	10	0	0	79	0	0	0	0	0
59	72	BMWV CONSTRUCTORS INC., Indianapolis, Ind.	M	767.5	NA	0	77	1	0	0	22	0	0	0	0	0
60	93	GAYLOR ELECTRIC, Indianapolis, Ind.	E	750.8	1,005.0	35	8	1	0	0	4	1	0	0	52	0
61	66	MILLER ELECTRIC CO., Jacksonville, Fla.	E	748.0	1,334.1	45	0	28	1	6	7	0	0	0	0	0
62	44	HARDER MECHANICAL, Portland, Ore.	M	744.0	747.0	20	30	0	0	0	35	5	0	0	10	0
63	29	SCHUFF STEEL CO. A DBM GLOBAL CO., Phoenix, Ariz.	ST	733.6	501.7	45	0	0	0	0	17	38	0	0	0	0
64	64	HATZEL & BUEHLER INC., Wilmington, Del.	E	725.4	17.5	83	0	0	0	0	10	1	0	0	6	0
65	85	JH KELLY LLC, Longview, Wash. ⁶⁵	M	707.0	353.9	32	26	3	0	0	31	3	0	0	3	0
66	62	BARNHART CRANE, Memphis, Tenn. ⁶⁶	O	700.6	730.0	10	27	24	0	2	30	5	0	0	2	0
67	68	MCKENNEY'S INC., Atlanta, Ga.	M	684.3	694.5	53	0	0	0	0	0	0	0	0	47	0
68	61	HELM GROUP, Freeport, Ill.	M	683.0	825.5	20	35	5	0	0	20	20	0	0	0	0
69	59	CLEAN EARTH, King of Prussia, Pa. ⁶⁹	O	670.8	670.8	0	0	0	0	1	0	0	96	0	0	0
70	58	CONGRUEX, Boulder, Colo.	U	668.3	NA	0	0	0	0	0	0	0	0	0	100	0
71	70	ATI RESTORATION, Anaheim, Calif. ⁷¹	O	648.6	510.6	100	0	0	0	0	0	0	0	0	0	0
72	49	TDINDUSTRIES, Dallas, Texas	M	643.5	764.6	64	15	0	0	0	0	1	0	0	20	0
73	76	WAYNE J. GRIFFIN ELECTRIC INC., Holliston, Mass.	E	616.0	535.3	72	11	0	0	6	0	1	0	0	10	0
74	74	KEELEY CONSTRUCTION GROUP, St. Louis, Mo.	U/C	609.0	600.0	0	25	35	15	0	0	0	0	0	0	0
75	75	HELLAS, Cedar Park, Texas ⁷⁵	O	606.1	666.1	0	0	0	0	0	0	0	0	0	0	0
76	73	PLATEAU EXCAVATION INC., Kennesaw, Ga.	X	602.1	742.6	20	30	0	0	0	0	0	0	0	50	0
77	**	ENERFAB POWER & INDUSTRIAL LLC, Cincinnati, Ohio ⁷⁷	O	597.2	233.2	2	35	55	0	0	8	0	0	0	0	0
78	77	J. F. AHERN CO., Fond du Lac, Wis. ⁷⁸	M/F	596.2	590.8	56	24	2	2	8	3	0	0	0	5	0
79	114	MURPHY CO., St. Louis, Mo.	M	596.1	380.6	38	45	2	1	0	10	0	0	0	4	0
80	69	COOPER STEEL, Shelbyville, Tenn.	ST	593.1	711.9	20	30	0	0	0	0	0	0	0	50	0
81	90	TRI-CITY GROUP, Davenport, Iowa ⁸¹	E	571.9	239.0	66	13	2	0	1	13	1	0	0	4	0
82	67	YTG LLC, Philadelphia, Miss.	M/E	557.3	340.6	32	54	0	0	0	14	0	0	0	0	0
83	83	MACDONALD-MILLER FACILITY SOLUTIONS, SeaTac, Wash.	M	554.0	275.0	90	10	0	0	0	0	0	0	0	0	0
84	96	ISC CONSTRUCTORS LLC, Baton Rouge, La.	E	549.0	111.2	0	0	21	0	0	1	0	0	0	0	0
85	81	CONCRETE STRATEGIES, Overland, Mo.	C	543.6	NA	20	30	0	0	0	10	10	0	0	30	0
86	92	U.S. ENGINEERING HOLDINGS, Kansas City, Mo.	M	537.0	800.0	40	20	0	0	0	0	0	0	0	40	0
87	156	HERMANSON CO., Kent, Wash.	M	532.9	532.9	32	52	0	0	0	1	4	0	0	6	0
88	89	HILL MECHANICAL CORP., Franklin Park, Ill.	M/SH	523.4	NA	100	0	0	0	0	0	0	0	0	0	0
89	84	LIMBACH FACILITY SERVICES, Warrendale, Pa.	M	518.8	550.2	0	0	0	0	0	0	0	0	0	0	0
90	78	HB MECHANICAL GROUP, Camp Hill, Penn.	M	517.1	NA	90	7	0	0	0	3	0	0	0	0	0
91	88	MURRAY CO., East Rancho Dominguez, Calif.	M	494.2	435.0	81	2	1	0	4	0	12	0	0	0	0
92	122	PRIME CONTROLS, Lewisville, Texas ⁹²	O	493.7	610.0	0	30	0	10	10	15	0	0	0	35	0
93	111	ALTERMAN INC., Live Oak, Texas	E	490.3	604.9	24	5	0	18	18	0	0	0	0	35	0
94	82	JOHN E. GREEN CO., Highland Park, Mich.	M	485.0	485.0	35	45	10	0	5	5	0	0	0	0	0
95	80	PACIFIC STEEL GROUP, San Diego, Calif.	O	473.0	361.0	65	0	0	5	10	0	20	0	0	0	0
96	170	ALLISON SMITH CO., Smyrna, Ga.	E	472.0	NA	50	0	0	0	0	0	0	0	0	50	0
97	112	INTERSTATES, Sioux Center, Iowa	E	469.9	279.2	0	21	2	0	2	61	0	0	0	1	0
98	87	ISEC INC., Greenwood Village, Colo.	I	464.4	446.7	77	2	0	0	1	0	20	0	0	0	0
99	**	LOENBRO, Westminster, Colo. ⁹⁹	M/E	464.0	464.0	1	12	2	0	3	31	0	2	0	40	0
100	107	MEI INDUSTRIAL SOLUTIONS, Coppell, Texas ¹⁰⁰	O	463.9	NA	5	45	0	0	0	0	0	0	0	50	0

FOOTNOTES: 52 = LANDSCAPE CONSTRUCTION; 53 = MARINE/PIILING; 54 = LANDSCAPE; 58 = REFRACTORY/INSULATION; 65 = MULTI-TRADE; 66 = LIFTING, RIGGING AND TRANSPORTATION; 69 = HAZARDOUS & NON-HAZARDOUS WASTE DISPOSAL, SOIL TREATMENT/RECYCLING, DREDGE; 71 = RESTORATION; 75 = SPORTS CONSTRUCTION; 77 = MECHANICAL / PIPING (PIPEFITTER & BOILERMAKER WORK); 78 = PIPE FABRICATION, CONTROLS; 81 = VARIOUS OTHER TRADES; 82 = CONTROL SYSTEMS; 85 = REINFORCING STEEL; 89 = LOENBRO INSPECTION SERVICE LINE; 90 = RIGGING, STORAGE, CRATING, TRANSPORTATION;

#99

LOENBRO acquired Centennial, Colo.-based Weifield Group (No. 207) in July, expanding its electrical service capabilities.

RANK 2025	RANK 2024	FIRM	FIRM TYPE	2024 REVENUE (\$ MIL)		MARKETS (% OF 2024 REVENUE)									
				TOTAL REVENUE	NEW CONTRACTS	GENERAL BUILDING	MANUFACTURING	POWER	WATER SUPPLY	SEWER / WASTE	INDUS. / PETROLEUM	TRANSPORTATION	HAZARDOUS WASTE	TELECOM	
101	116	INGLETT & STUBBS, Mableton, Ga.	E	456.0	714.0	35	2	0	0	0	0	8	0	55	
102	125	SARGENT ELECTRIC CO., Pittsburgh, Pa.	E	453.1	508.2	9	10	36	0	2	17	0	0	4	
103	115	NOX GROUP, Phoenix, Ariz.	E	445.3	NA	0	20	0	0	20	0	0	60		
104	106	ROGERS ELECTRIC, Alpharetta, Ga.	E	445.0	520.0	40	35	0	0	0	0	0	25		
105	108	SURE STEEL INC, South Weber, Utah	ST	441.2	425.4	14	27	0	0	0	0	2	57		
106	137	BOND CIVIL & UTILITY CONSTRUCTION INC., Medford, Mass.	U/X	437.2	NA	5	0	0	1	1	28	8	56	1	
107	102	JMEG LLC, Farmers Branch, Texas	E	437.0	117.6	35	54	0	0	0	0	11	0	0	
108	97	RK INDUSTRIES LLC, Denver, Colo. ¹⁰⁸	M/O	435.0	NA	47	4	0	0	1	2	4	0	43	
109	101	INDEPENDENCE EXCAVATING, Independence, Ohio	X/D	430.1	456.7	23	3	8	0	0	0	14	28	24	
110	100	WESTERN PARTITIONS INC., Wilsonville, Ore.	W	430.0	430.0	100	0	0	0	0	0	0	0	0	
111	99	PAN-PACIFIC MECHANICAL LLC, Fountain Valley, Calif.	M	426.1	520.3	91	0	0	0	0	0	10	0	0	
112	117	ROGERS BUILDING SOLUTIONS, Douglasville, Ga.	M	424.5	452.2	76	3	0	0	0	0	0	0	21	
113	110	HARMON INC., Bloomington, Minn.	G	419.9	290.9	72	0	0	0	0	0	28	0	0	
114	119	P1 CONSTRUCTION LLC, Lenexa, Kan.	M/E	418.0	418.0	21	25	0	0	0	25	0	0	5	
115	123	BEAVER EXCAVATING CO., Canton, Ohio	X	413.4	403.7	31	24	7	1	6	6	25	0	0	
116	134	MANAFORT BROTHERS INC., Plainville, Conn.	X	412.3	355.2	65	0	4	0	0	0	27	4	0	
117	95	DANELLA, Plymouth Meeting, Pa.	U	410.0	430.0	0	0	30	0	0	0	0	0	30	
118	86	PRECISION WALLS INC., Cary, N.C.	W	408.0	431.7	74	16	0	0	0	0	0	0	10	
119	**	BZI, Cedar City, Utah ¹¹⁹	ST	403.7	490.1	40	19	0	0	0	3	0	0	39	
120	109	GUARANTEE ELECTRICAL CO., St. Louis, Mo.	E	402.9	NA	46	12	6	5	12	7	2	0	10	
121	160	HODESS CLEANROOMS, Attleboro, Mass. ¹²¹	O	397.0	227.0	0	90	10	0	0	0	0	0	0	
122	148	VALLEY ELECTRIC, Everett, Wash.	E	394.0	416.6	25	0	0	0	25	25	25	0	0	
123	**	SUNLAND ASPHALT & CONSTRUCTION LLC, Phoenix, Ariz. ¹²³	O	394.0	450.4	9	0	0	0	0	0	91	0	0	
124	158	ENCORE ELECTRIC, Lakewood, Colo.	E	393.0	NA	65	3	1	0	0	0	1	0	30	
125	131	CLEVELAND ELECTRIC CO., Atlanta, Ga.	E	392.2	563.6	25	0	0	0	0	0	28	0	47	
126	127	VEIT & CO. INC., Rogers, Minn. ¹²⁶	X	387.3	358.0	47	1	5	11	7	5	14	0	10	
127	155	ACE ELECTRIC INC., Valdosta, Ga.	E	385.6	263.8	43	33	0	0	1	0	0	0	23	
128	152	PRISM ELECTRIC, Garland, Texas	E	385.5	309.2	8	18	0	0	1	0	16	0	27	
129	145	CEC FACILITIES LLC, Irving, Texas	E	385.0	450.0	15	75	0	0	0	0	0	0	10	
130	172	NEVELL GROUP INC., Brea, Calif.	W	377.2	271.5	100	0	0	0	0	0	0	0	0	
131	79	BERKEL, Bonner Springs, Kan.	FN	370.6	NA	45	30	2	0	6	1	16	0	0	
132	204	CUMMINGS ELECTRICAL, Fort Worth, Texas	E	364.2	420.0	20	38	0	0	0	2	0	0	0	
133	141	EGAN CO., Champlin, Minn.	E	361.0	324.1	41	17	11	0	5	0	15	0	11	
134	151	LAKE ERIE ELECTRIC COS., Westlake, Ohio	E	358.9	358.9	35	40	0	0	5	10	0	0	10	
135	104	BAKER ELECTRIC & RENEWABLES, Escondido, Calif.	E	358.1	435.7	46	5	42	0	0	0	4	0	3	
136	126	COMMONWEALTH HOLDINGS INC., Lincoln, Neb.	E	357.5	322.2	40	17	2	0	0	28	0	0	3	
137	120	BAKER GROUP, Ankeny, Iowa ¹³⁷	M	355.2	151.2	80	20	0	0	0	0	0	0	0	
138	238	LANDMARK CONSTRUCTION CO., North Charleston, S.C. ¹³⁸	X	354.9	847.8	31	37	0	0	0	2	19	0	11	
139	**	I&I SOFT CRAFT SOLUTIONS, Harahan, La.	M/P	345.6	313.8	0	4	4	0	0	92	0	0	0	
140	113	FESSLER & BOWMAN INC., Holly, Mich.	C	343.7	297.5	10	63	0	2	6	16	3	0	0	
141	167	POYNTER, Greenwood, Ind.	SH	343.5	390.9	50	40	0	0	0	10	0	0	0	
142	191	BOMEL CONSTRUCTION CO. INC., Anaheim Hills, Calif.	C	339.0	460.0	100	0	0	0	0	0	0	0	0	
143	140	THE MORSE GROUP INC., Freeport, Ill.	E	338.7	143.3	55	25	15	0	5	0	0	0	0	
144	146	NATIONAL CONSTRUCTION ENTERPRISES INC., Ypsilanti, Mich.	W	336.3	352.4	100	0	0	0	0	0	0	0	0	
145	183	ERMCO INC., Greenwood, Ind.	E	331.9	370.9	50	17	0	1	1	1	2	0	10	
146	133	BAKER ROOFING CO., Cary, N.C.	R	329.7	329.7	100	0	0	0	0	0	0	0	0	
147	105	FISK ELECTRIC CO., Houston, Texas	E	329.6	311.4	67	0	0	3	0	0	29	0	1	
148	**	ICS HOLDING, Houston, Texas	E	325.2	345.0	35	20	5	0	0	35	0	0	5	
149	197	DELTA DIVERSIFIED ENTERPRISES INC., Tempe, Ariz.	E	320.2	110.0	15	45	0	0	0	30	10	0	0	
150	138	DRILL TECH DRILLING & SHORING INC., Antioch, Calif.	X	315.8	455.6	25	0	5	10	10	0	40	0	0	

FOOTNOTES: ¹⁰⁸ = MISC. METALS, PROGRAMMATIC MANAGEMENT, BAS/CONTROLS, OFFSITE, MODULAR, MANUFACTURED PRODUCTS, WATER TREATMENT SERVICES; ¹¹⁹ = GENERAL CONSTRUCTION & MATERIAL PRODUCT SALES; ¹²¹ = CLEANROOMS; ¹²³ = ROAD MAINTENANCE AND PRESERVATION; ¹²⁶ = INDUSTRIAL CLEANING, DREDGING & DIVING; ¹³⁷ = 13% CONTROLS, 10% SERVICE, 1% TECHNOLOGY; ¹³⁸ = INDUSTRIAL MAINTENANCE;

RANK 2025	RANK 2024	FIRM	FIRM TYPE	2024 REVENUE (\$ MIL)		MARKETS (% OF 2024 REVENUE)									
				TOTAL REVENUE	NEW CONTRACTS	GENERAL BUILDING	MANUFACTURING	POWER	WATER SUPPLY	SEWER / WASTE	INDUS. / PETROLEUM	TRANSPORTATION	HAZARDOUS WASTE	TELECOM	
151	171	STANDARD DRYWALL INC., Lakeside, Calif.	W	312.8	342.3	90	0	0	0	0	0	10	0	0	
152	143	WEST VALLEY CONSTRUCTION, Campbell, Calif.	U	312.7	NA	0	0	10	76	0	0	0	0	13	
153	142	MCCLURE CO., Harrisburg, Pa.	M/SH	312.6	215.5	50	5	10	5	2	17	5	0	2	
154	202	KIELY FAMILY OF COS., Tinton Falls, N.J. ¹⁵⁴	U/O	309.8	425.6	7	0	0	8	0	85	0	0	0	
155	118	O'CONNELL ELECTRIC CO. INC., Victor, N.Y.	E	308.0	308.0	15	5	60	0	5	5	5	0	5	
156	177	MENARD, Carnegie, Pa.	FN	307.6	246.3	58	15	1	2	0	8	11	0	5	
157	263	FIVE-S GROUP, Baton Rouge, La. ¹⁵⁷	X/O	304.8	350.0	0	15	0	0	0	70	0	0	15	
158	132	WESTERN SPECIALTY CONTRACTORS, St. Louis, Mo. ¹⁵⁸	C/MA	304.1	338.0	100	0	0	0	0	0	0	0	0	
159	153	ICON MECHANICAL, Granite City, Ill.	M	302.2	318.3	20	50	0	0	0	30	0	0	0	
160	162	RYAN INC. CENTRAL, Janesville, Wis.	X	301.2	293.9	39	0	16	0	45	0	0	0	0	
161	225	SPC MECHANICAL, Wendell, N.C.	M	294.2	313.0	55	25	0	0	0	10	0	10	0	
162	207	MSS SOLUTIONS, Charlotte, N.C. ¹⁶²	M	294.0	162.9	86	4	0	0	0	4	5	0	0	
163	206	RICHARD GOETTLE INC., Cincinnati, Ohio	FN	293.0	424.0	0	0	0	0	0	0	0	0	0	
164	130	CROWN CORR INC., Gary, Ind.	SH/G	292.0	391.0	90	2	0	0	0	0	8	0	0	
165	124	TRI-CITY ELECTRICAL CONTRACTORS INC., Altamonte Springs, Fla.	E	289.0	225.4	100	0	0	0	0	0	0	0	0	
166	168	JACK B. HENDERSON CONSTR. CO. INC., Albuquerque, N.M.	M	287.6	143.4	24	70	3	0	0	3	0	0	0	
167	157	R.T. MOORE CO. INC., Indianapolis, Ind.	M	287.3	250.0	100	0	0	0	0	0	0	0	0	
168	139	E.M. DUGGAN INC., Canton, Mass.	M	286.8	208.0	100	0	0	0	0	0	0	0	0	
169	149	BROADWAY ELECTRIC INC., Elk Grove Village, Ill.	E	285.0	250.0	70	20	0	0	0	0	0	0	10	
170	214	VAUGHN INDUSTRIES LLC, Carey, Ohio ¹⁷⁰	E	284.0	301.9	32	35	8	0	0	0	0	0	20	
171	176	CONDON-JOHNSON & ASSOCIATES INC., Oakland, Calif.	FN	282.0	282.0	50	0	0	0	0	0	50	0	0	
172	181	IREX CONTRACTING GROUP, Lancaster, Pa. ¹⁷²	O	281.8	331.9	41	7	18	0	1	25	2	0	0	
173	201	CHARTER MECHANICAL, Portland, Ore.	M	281.7	238.1	3	86	0	1	0	10	0	0	0	
174	144	MARTIN CONCRETE CONSTRUCTION, Kennesaw, Ga.	C	281.0	175.0	55	34	0	0	0	0	0	0	4	
175	165	BRANDENBURG INDUSTRIAL SERVICE CO., Elmhurst, Ill.	D	279.2	NA	23	36	25	0	0	13	0	3	0	
176	268	ADAMS ELECTRIC CO., Greensboro, N.C.	E	278.0	120.1	80	2	0	0	0	0	0	0	18	
177	178	MILLER ELECTRIC CO., Omaha, Neb.	E	277.5	300.0	65	0	0	0	0	0	5	0	30	
178	189	C.A.C. INDUSTRIES INC., Long Island City, N.Y. ¹⁷⁸	U/O	275.6	307.4	0	0	0	9	34	0	20	0	0	
179	135	ORION CONCRETE, Houston, Texas	C	275.1	737.3	98	0	0	0	0	2	0	0	0	
180	298	ATKORE/UNISTRUT CONSTRUCTION, Addison, Ill.	W	274.9	373.4	25	50	0	0	0	0	0	0	25	
181	229	B & I CONTRACTORS INC., Fort Myers, Fla.	M	272.2	414.8	100	0	0	0	0	0	0	0	0	
182	175	BAKER TRIANGLE, Mesquite, Texas	W	271.2	250.9	100	0	0	0	0	0	0	0	0	
183	166	CAPFORM INC., Carrollton, Texas	C	270.0	380.0	100	0	0	0	0	0	0	0	0	
184	227	D.P. ELECTRIC INC., Tempe, Ariz.	E	267.0	180.0	88	11	0	0	1	0	1	0	0	
185	159	NEW HUDSON FACADES, Linwood, Pa.	G	266.0	266.0	100	0	0	0	0	0	0	0	0	
186	136	PAUL JOHNSON DRYWALL, Prescott, Ariz.	W	264.0	376.6	100	0	0	0	0	0	0	0	0	
187	211	WILSON ELECTRIC, Tempe, Ariz.	E	261.5	195.8	90	0	0	0	0	0	0	0	10	
188	190	PACIFIC RIM MECHANICAL, San Diego, Calif.	M	258.9	NA	100	0	0	0	0	0	0	0	0	
189	218	GOYETTE MECHANICAL CO., Flint, Mich.	M/SH	258.0	320.0	40	25	0	0	0	0	0	0	35	
190	179	GREENWOOD INDUSTRIES, Worcester, Mass.	R	251.9	245.8	80	4	0	4	4	4	4	0	0	
191	221	AMPAM, Carson, Calif.	M	250.0	195.0	100	0	0	0	0	0	0	0	0	
192	164	PRECISION CONCRETE CONSTRUCTION INC., Alpharetta, Ga.	C	247.9	238.3	15	78	0	0	0	0	2	0	0	
193	**	STRACK INC., Fairburn, Ga.	U/X	245.2	NA	40	40	0	0	10	0	10	0	0	
194	198	EASTERN COS., Johns Creek, Ga.	W	245.0	107.3	20	80	0	0	0	0	0	0	0	
195	185	MILLER SIERRA CONTRACTORS, Euless, Texas	C	243.5	321.8	100	0	0	0	0	0	0	0	0	
196	208	AMTECK LLC, Lexington, Ky.	E	240.0	235.0	15	40	0	0	0	30	0	0	15	
197	210	PAYNECREST ELECTRIC, St. Louis, Mo.	E	240.0	225.0	40	45	10	0	0	0	0	0	5	
198	188	W.A. BASIC CONSTRUCTION CO. INC., Long Beach, Calif.	U	239.0	361.5	0	0	35	40	5	20	0	0	0	
199	182	WAYNE BROTHERS COS., Davidson, N.C. ¹⁹⁹	C/X	236.5	NA	46	43	0	0	0	0	0	0	12	
200	193	IVEY MECHANICAL CO., Kosciusko, Miss.	M	236.2	163.0	20	20	0	0	0	30	0	0	0	

FOOTNOTES: ¹⁵⁴ = WATER RESOURCES; ¹⁵⁷ = MATERIAL SUPPLY; ¹⁵⁸ = INSULATION; ¹⁶² = WATERPROOFING; ¹⁶⁶ = LOW VOLTAGE; ¹⁷⁰ = RENEWABLE ENERGY; ¹⁷² = TRANSPORTATION; ¹⁹⁹ = INDUSTRIAL;

#147

FISK ELECTRIC is working on the 14-story, 1.3 million-sq-ft Harris Health facility at the Lyndon B. Johnson hospital campus in Houston.

RANK 2025	RANK 2024	FIRM	FIRM TYPE	2024 REVENUE (\$ MIL)		MARKETS (% OF 2024 REVENUE)								
				TOTAL REVENUE	NEW CONTRACTS	GENERAL BUILDING	MANUFACTURING	POWER	WATER SUPPLY	SEWER / WASTE	INDUS. / PETROLEUM	TRANSPORTATION	HAZARDOUS WASTE	TELECOM
201	174	PENHALL CO., Irving, Texas	D	232.5	98.3	35	10	5	10	5	5	20	10	0
202	233	HYPower, Fort Lauderdale, Fla.	E	230.0	212.0	30	0	30	0	0	0	20	0	20
203	161	PETILLO COS., Flanders, N.J.	U/X	228.9	154.6	92	0	0	0	0	0	0	0	8
204	203	JRCRUZ CORP., Holmdel, N.J. ²⁰⁴	U/O	225.0	200.0	0	0	10	0	70	0	10	0	0
205	205	COLLINS ELECTRICAL CO. INC., Stockton, Calif.	E	224.8	131.8	69	0	18	0	4	0	9	0	0
206	129	PACIFIC STRUCTURES INC., San Francisco, Calif.	C	224.1	NA	100	0	0	0	0	0	0	0	0
207	194	WEIFIELD GROUP CONTRACTING, Centennial, Colo.	E	224.0	224.3	38	25	0	0	19	0	12	0	6
208	186	TWEET GAROT MECHANICAL, De Pere, Wis.	M	223.3	165.0	30	35	0	0	0	35	0	0	0
209	228	S&F CONCRETE CONTRACTORS CORP., Hudson, Mass.	C	222.9	155.5	75	13	1	0	0	0	7	0	5
210	121	THE RAYMOND GROUP, Orange, Calif.	W	222.6	230.9	100	0	0	0	0	0	0	0	0
211	173	ACOUSTI ENGINEERING CO. OF FLORIDA, Orlando, Fla.	W	219.1	312.5	74	11	0	0	0	0	15	0	0
212	303	J. RANCK ELECTRIC, Mount Pleasant, Mich.	E	218.1	221.5	3	0	59	0	3	11	23	0	0
213	**	EUTAW CONSTRUCTION CO. INC., Madison, Miss.	X	218.0	143.5	0	45	0	0	0	0	55	0	0
214	243	MULLINS MECHANICAL & WELDING LLC, Carrollton, Ga.	M	216.6	376.5	0	30	0	0	0	10	0	0	60
215	239	MARATHON ELECTRICAL CONTRACTORS, Irondale, Ala.	E	215.6	335.3	25	10	0	0	0	0	0	0	65
216	234	KILGORE INDUSTRIES, Houston, Texas	M	215.0	373.0	60	10	0	5	5	0	20	0	0
217	230	GREENBERRY INDUSTRIAL, Vancouver, Wash.	M/ST	215.0	99.0	0	0	0	0	0	100	0	0	0
218	219	MTECH MECHANICAL, Westminster, Colo.	M	212.0	83.0	78	20	0	0	0	0	2	0	0
219	195	D.H. GRIFFIN WRECKING CO. INC., Greensboro, N.C.	D	211.3	197.0	33	25	9	1	1	10	6	2	0
220	224	GREATER METROPLEX INTERIORS, Southlake, Texas	W	210.6	212.4	100	0	0	0	0	0	0	0	0
221	212	NEWKIRK ELECTRIC ASSOCIATES INC., Muskegon, Mich.	E	210.2	163.4	6	19	60	0	1	4	0	0	8
222	226	VAN ERT ELECTRIC CO. INC., Kronenwetter, Wis.	E	207.3	207.3	10	20	25	0	10	20	5	0	10
223	**	CINTERRA, Hope Mills, N.C. ²²³	E	205.7	204.8	1	0	94	0	0	5	0	0	0
224	222	W&W GLASS, Nanuet, N.Y.	G	205.0	100.0	70	0	0	0	0	0	30	0	0
225	**	FELIX CONSTRUCTION CO., Phoenix, Ariz.	A	204.1	NA	0	0	0	60	40	0	0	0	0
226	260	CHERRY COATINGS, Carrollton, Texas	P	202.2	NA	50	40	0	0	0	0	10	0	0
227	323	THE SYSTEMS GROUP, El Dorado, Ark. ²²⁷	O	201.1	311.6	0	0	0	0	0	100	0	0	0
228	274	DORVIN D. LEIS CO. INC., Kahului, Hawaii ²²⁸	M	201.0	276.0	97	0	0	0	3	0	0	0	0
229	103	MORRIS-SHEA BRIDGE CO. INC., Irondale, Ala.	FN	198.7	112.8	20	40	0	0	0	25	0	0	0
230	232	DONLEY COS., Cleveland, Ohio	C	198.6	190.0	94	0	0	0	6	0	0	0	0
231	236	ENTERPRISE PROPERTIES INC., Omaha, Neb.	C	197.0	221.3	50	0	0	0	15	0	15	0	20
232	240	EIS HOLDINGS LLC, Westlake, Texas	A	196.3	280.0	10	0	20	0	0	30	10	30	0
233	216	AMERICAN STRUCTURAL CONCRETE, Lithonia, Ga.	C	195.3	12.7	92	6	0	0	0	0	0	0	2
234	261	MUTH ELECTRIC INC., Mitchell, S.D.	E	195.0	243.0	31	18	16	2	7	12	8	0	6
235	259	PERSONS SERVICES CORP., Mobile, Ala. ²³⁵	M/O	194.8	213.8	45	20	0	20	0	15	0	0	0
236	**	MCKEE UTILITY CONTRACTORS LLC, Prague, Okla.	U	194.4	366.4	0	0	0	72	28	0	0	0	0
237	252	SOUTHERN AIR, Lynchburg, Va.	M	194.1	155.0	86	14	0	0	0	0	0	0	0
238	209	REFLECTION WINDOW + WALL, Chicago, Ill.	G	193.0	193.0	100	0	0	0	0	0	0	0	0
239	231	APEX IMAGING SERVICES, Pomona, Calif.	E	192.0	220.0	100	0	0	0	0	0	0	0	0
240	199	EQUIX INC., Fond du Lac, Wis. ²⁴⁰	U/O	191.2	NA	0	0	6	0	27	34	12	0	7
241	215	CHARGE, Sacramento, Calif.	U	188.8	427.9	0	0	56	0	0	41	0	0	3
242	280	ROYAL ELECTRIC CO., Sacramento, Calif.	E	187.8	214.4	33	0	0	0	2	0	64	0	0
243	223	W. L. FRENCH EXCAVATING CORP., North Billerica, Mass. ²⁴³	X/O	187.0	300.0	20	0	0	0	20	0	20	20	0
244	284	CLEARY CONSTRUCTION INC., Tompkinsville, Ky.	U/X	185.5	224.7	0	0	0	31	33	3	32	0	1
245	247	LETSOS CO., Houston, Texas	M	184.5	175.0	99	0	0	0	0	1	0	0	0
246	192	NORTHLAND CONCRETE & MASONRY CO. LLC, Shakopee, Minn.	C/MA	184.0	170.0	55	15	7	4	0	19	0	0	0
247	235	SDB INC., Tempe, Ariz. ²⁴⁷	O	183.7	NA	50	50	0	0	0	0	0	0	0
248	187	WDF, Mount Vernon, N.Y.	M	183.4	650.0	66	0	0	22	0	0	12	0	0
249	257	CLARK BROS. INC., Fresno, Calif.	E/C	182.3	240.1	0	0	73	0	27	0	0	0	0
250	246	ADVANCED ROOFING, Ft. Lauderdale, Fla. ²⁵⁰	R	180.6	130.6	60	7	12	0	0	10	0	0	11

FOOTNOTES: 204 = 15% - MICROTUNNELING, 15% - MILLING/PAVING; 223 = FENCING; 227 = INDUSTRIAL PROCESS PIPING; 228 = FACILITY SERVICES; 235 = GENERAL CONSTRUCTION, DISASTER RELIEF; 240 = NOT REPORTED; 243 = SOIL MANAGEMENT & WASTE DISPOSAL; 247 = CLEANROOMS, AUTOMATED MATERIAL HANDLING SYSTEMS, SCAFFOLDING, METAL FABRICATION; 250 = SOLAR;

RANK 2025	2024	FIRM	FIRM TYPE	2024 REVENUE (\$ MIL)		MARKETS (% OF 2024 REVENUE)									
				TOTAL REVENUE	NEW CONTRACTS	GENERAL BUILDING	MANUFACTURING	POWER	WATER SUPPLY	SEWER / WASTE	INDUS. / PETROLEUM	TRANSPORTATION	HAZARDOUS WASTE	TELECOM	
251	**	D. H. GRIFFIN INFRASTRUCTURE LLC, Greensboro, N.C.	U/X	178.2	166.8	10	80	0	0	0	10	0	0	0	
252	237	RACHEL CONTRACTING, St. Michael, Minn.	X	178.2	175.7	40	0	40	0	0	20	0	0	0	
253	245	HUSSUNG MECHANICAL CONTRACTORS INC., Louisville, Ky.	M	178.1	149.7	80	10	0	0	0	0	0	0	10	
254	250	F.L. CRANE & SONS INC., Fulton, Miss. ²⁵⁴	W	177.2	209.5	98	1	0	0	0	0	1	0	0	
255	242	EXPANSE ELECTRICAL CO., Houston, Texas	E	177.0	172.0	0	0	7	0	1	83	0	0	1	
256	317	DUNN BUILDING CO., Birmingham, Ala.	C/ST	172.2	78.2	0	50	0	0	0	35	15	0	0	
257	329	PAULSON-CHEEK MECHANICAL, Norcross, Ga.	M	170.7	237.0	67	32	0	0	1	0	0	0	0	
258	307	A-C ELECTRIC CO., Bakersfield, Calif.	E	170.0	320.0	39	0	25	2	0	0	9	0	0	
259	271	OLSSON INDUSTRIAL ELECTRIC, Springfield, Ore.	E	169.1	278.5	10	10	0	35	0	45	0	0	0	
260	275	O'HARA'S SON ROOFING CO. (OSR), Chicago, Ill.	R	165.1	165.1	50	50	0	0	0	0	0	0	0	
261	254	W.G. TOMKO, Finleyville, Pa.	M	163.3	61.0	48	14	1	1	0	4	33	0	0	
262	184	BASDEN STEEL CORP., Burleson, Texas	ST	160.3	187.5	100	0	0	0	0	0	0	0	0	
263	291	MOSS UTILITIES, Dallas, Texas	U	160.0	180.0	0	0	0	70	30	0	0	0	0	
264	241	H.J. MARTIN AND SON, Green Bay, Wis. ²⁶⁴	O	159.7	119.9	90	5	0	0	0	5	0	0	0	
265	273	THOMPSON SOLUTIONS GROUP, Sioux City, Iowa ²⁶⁵	E	157.6	137.0	50	5	10	0	0	20	0	0	10	
266	277	TJ WIES CONTRACTING INC., Lake St. Louis, Mo. ²⁶⁶	W	155.8	123.6	80	20	0	0	0	0	0	0	0	
267	249	WORTH AND CO. INC., Pipersviller, Pa. ²⁶⁷	M/O	155.5	242.0	70	0	0	0	17	2	0	0	0	
268	279	KALKREUTH ROOFING AND SHEET METAL, Wheeling, W.Va.	R	154.0	161.7	61	15	3	2	5	4	5	0	5	
269	**	KHS&S CONTRACTORS - EAST, Tampa, Florida	W	153.7	NA	95	0	0	0	0	0	5	0	0	
270	339	WARD ELECTRIC CO. INC., Longmont, Colo.	E	153.6	153.6	5	0	0	0	0	3	0	0	5	
271	**	MERSINO WATER SOLUTIONS, Auburn Hills, Mich. ²⁷¹	X/FN	150.8	165.0	35	5	10	10	20	10	10	0	0	
272	314	RED CEDAR STEEL, Menomonie, Wis.	ST	150.0	200.0	40	50	0	0	0	0	10	0	0	
273	262	HUMPHREY & ASSOCIATES INC., Carrollton, Texas	M/E	149.7	149.7	60	40	0	0	0	0	0	0	0	
274	266	BUIST, Byron Center, Mich.	E	149.1	98.5	60	20	5	0	0	5	0	0	10	
275	286	MIDWEST DRYWALL CO. INC., Wichita, Kan.	W	148.1	187.7	100	0	0	0	0	0	0	0	0	
276	365	BRIGGS ELECTRIC, Tustin, Calif.	E	146.9	160.0	32	5	0	0	0	0	3	0	60	
277	265	EDGERTON CONTRACTORS INC., Oak Creek, Wis.	X	146.1	141.3	68	0	0	0	2	0	27	0	0	
278	300	ACTION ELECTRIC CO. INC., Atlanta, Ga. ²⁷⁸	M/E	144.5	135.0	10	80	0	0	0	10	0	0	0	
279	290	QUESTMARK A DIVISION OF CENTIMARK CORP., Canonsburg, Pa. ²⁷⁹	O	144.3	154.8	50	50	0	0	0	0	0	0	0	
280	281	STARK EXCAVATING INC., Bloomington, Ill. ²⁸⁰	U/C/X	144.0	180.6	9	6	0	2	8	0	75	0	0	
281	200	DECKER ELECTRIC CO. INC., San Francisco, Calif.	E	142.2	55.6	100	0	0	0	0	0	0	0	0	
282	282	MID-CITY ELECTRIC CO., Westerville, Ohio	E	142.0	NA	50	18	0	0	0	0	0	0	24	
283	258	OKLAHOMA ELECTRICAL SUPPLY CO. (OESCO), Oklahoma City, Okla. ²⁸³	E	140.8	138.6	62	0	28	0	0	0	0	0	10	
284	220	INDUSTRIAL POWER SYSTEMS (IPS), Rossford, Ohio	M	140.0	93.5	10	36	9	0	5	40	0	0	0	
285	269	THE WILLIAMS GROUP, Merrifield, Va.	ST	139.1	148.8	58	0	0	0	0	25	17	0	0	
286	295	FLAGGER FORCE, Hummelstown, Pa. ²⁸⁶	O	139.0	139.0	0	0	45	0	0	0	20	0	35	
287	**	NASHVILLE MACHINE CO. INC., Nashville, Tenn.	M	138.3	122.9	70	10	0	0	0	5	10	0	5	
288	255	C3M POWER SYSTEMS, Capitol Heights, Md.	E	137.2	252.5	1	0	0	0	0	0	99	0	0	
289	276	ELLINGSON COS., West Concord, Minn. ²⁸⁹	U/O	137.2	183.0	8	0	8	0	5	9	0	0	4	
290	297	NEW ENGLAND FINISH SYSTEMS, Salem, N.H.	W	136.0	145.0	100	0	0	0	0	0	0	0	0	
291	296	COMNET COMMUNICATIONS LLC, Bethel, Conn. ²⁹¹	O	135.0	147.0	0	0	0	0	0	0	0	0	100	
292	358	SHAW ELECTRIC CO., Southfield, Mich.	E	133.0	121.0	30	13	0	25	20	0	0	0	12	
293	315	OIL CAPITAL ELECTRIC, Broken Arrow, Okla.	E	133.0	150.0	45	10	0	10	15	20	0	0	0	
294	285	NEAD ELECTRIC, East Rutherford, N.J.	E	132.6	58.3	100	0	0	0	0	0	0	0	0	
295	322	FRESH MEADOW MECHANICAL CORP, Fresh Meadows, N.Y. ²⁹⁵	M	132.0	100.0	75	0	0	0	0	0	20	0	0	
296	**	THE TRI-M GROUP, Kennett Square, Pa.	E/U	132.0	NA	15	38	17	0	0	3	0	0	18	
297	294	SELECT DEMO SERVICES LLC, Salem, N.H.	D	130.5	78.4	30	0	0	0	1	28	10	30	1	
298	305	ACS SYSTEM, Hicksville, N.Y.	M	130.0	200.0	100	0	0	0	0	0	0	0	0	
299	328	MCKAMISH INC., Pittsburgh, Pa.	M/SH	129.0	NA	97	1	0	0	0	0	1	0	0	
300	289	GREATER GEORGIA CONCRETE LLC, Berkeley Lake, Ga.	C	128.5	120.8	81	19	0	0	0	0	0	0	0	

FOOTNOTES: 254 = FLOORS / CRATES & PALLET MFG, HANDRAILS; 264 = NOT REPORTED; 265 = PANELIZED AND MODULAR SYSTEMS; 267 = SEWER WORK; 271 = SEWER WORK; 278 = PAINTING, COATINGS, INTERIOR, SITE WORK; 279 = COMMERCIAL FLOORING & PARKING LOT RESTORATION; 280 = BRIDGE & CIP CURBS; 283 = TELEDATA/ADVANCED TECHNOLOGY; 286 = NOT REPORTED; 289 = NOT REPORTED; 289 = SPECIALTY/AGRICULTURAL; 291 = LOW VOLTAGE ELECTRICAL; 295 = LOGISTICS;

#260

O'HARA'S SON ROOFING

recently acquired Starkweather Roofing, its first purchase after being bought by Angeles Equity Partners.

RANK 2025	RANK 2024	FIRM	FIRM TYPE	2024 REVENUE (\$ MIL)		MARKETS (% OF 2024 REVENUE)										
				TOTAL REVENUE	NEW CONTRACTS	GENERAL BUILDING	MANUFACTURING	POWER	WATER SUPPLY	SEWER / WASTE	INDUS. / PETROLEUM	TRANSPORTATION	HAZARDOUS WASTE	TELECOM		
301	283	1901 INC., Madison, Wis.	M	127.7	130.0	90	10	0	0	0	0	0	0	0	0	0
302	**	INNOVATIVE CONSTRUCTION SOLUTIONS, Costa Mesa, Calif.	A	127.6	90.2	8	8	0	5	15	0	0	64	0	0	0
303	414	FEYEN ZYLSTRA, Grand Rapids, Mich.	E	127.5	152.0	29	40	1	0	3	1	1	0	0	25	
304	293	MASSEY'S PLATE GLASS & ALUMINUM INC., Branford, Conn.	G	127.0	110.0	100	0	0	0	0	0	0	0	0	0	
305	369	J.M. BRENNAN INC., Milwaukee, Wis.	M	126.4	158.0	90	5	0	0	0	5	0	0	0	0	
306	384	THORNE ASSOCIATES INC., Chicago, Ill.	W	126.3	63.9	76	0	0	0	0	0	0	0	0	24	
307	316	MILLER INSULATION CO. INC., Bismarck, N.D. ³⁰⁷	O	125.8	57.3	26	0	0	0	0	74	0	0	0	0	
308	347	BOUDREAU PIPELINE CORP., Corona, Calif.	U	125.1	86.8	90	0	0	5	5	0	0	0	0	0	
309	267	ARCHITECTURAL GLASS & ALUMINUM, Livermore, Calif.	G	122.5	172.0	100	0	0	0	0	0	0	0	0	0	
310	336	FERGUSON, Plainville, Conn.	M/E	122.4	128.8	98	0	2	0	0	0	0	0	0	0	
311	278	GAINES & CO., Reisterstown, Md. ³¹¹	U/O	122.3	155.0	90	5	0	5	0	0	0	0	0	0	
312	**	GREAT BASIN INDUSTRIAL, Kaysville, Utah ³¹²	O	122.2	NA	0	2	10	0	0	88	0	0	0	0	
313	318	BERMUDEZ LONGO DIAZ-MASSO LLC, Guaynabo, P.R. ³¹³	M/E/O	122.0	148.0	35	5	5	5	0	10	10	0	0	30	
314	248	CANNON & WENDT ELECTRIC CO., Phoenix, Ariz.	E	121.9	121.9	90	0	0	0	0	0	0	0	0	10	
315	312	PITTSBURG TANK & TOWER GROUP INC., Henderson, Ky.	ST	121.6	136.1	21	5	10	7	0	20	4	14	19		
316	337	11400 LLC, Lancaster, Pa. ³¹⁶	O	121.1	155.0	98	2	0	0	0	0	0	0	0	0	
317	325	SENTINEL SAFETY & SECURITY GROUP LLC, Appleton, Wis.	F	120.9	83.2	70	10	0	0	0	10	0	0	0	5	
318	256	FIVE STAR ELECTRIC CORP., Ozone Park, N.Y.	E	118.7	697.3	8	0	0	26	0	0	66	0	0	0	
319	**	AIRO MECHANICAL LLC, Mooresville, N.C.	M	117.7	134.1	100	0	0	0	0	0	0	0	0	0	
320	304	DALEY'S DRYWALL, Campbell, Calif.	W	115.8	NA	100	0	0	0	0	0	0	0	0	0	
321	344	INTEGRATED FACILITY SERVICES INC., Fenton, Mo.	M	114.8	73.3	92	6	0	0	0	2	0	0	0	0	
322	345	GO-TILT CONSTRUCTION, Deerfield Beach, Fla.	C	114.7	NA	100	0	0	0	0	0	0	0	0	0	
323	348	SUN VALLEY MASONRY INC., Phoenix, Ariz.	MA	114.1	114.1	100	0	0	0	0	0	0	0	0	0	
324	353	OPTILINE ENTERPRISES, Nashua, N.H.	W/ST	113.6	137.4	100	0	0	0	0	0	0	0	0	0	
325	327	MARTIN PETERSEN CO. INC., Kenosha, Wis.	M	113.6	116.0	80	10	0	0	0	10	0	0	0	0	
326	362	ASSOCIATED CONSTRUCTION AND ENGINEERING INC., Temecula, Calif. ³²⁶	ST	113.6	212.1	5	0	2	65	5	23	0	0	0	0	
327	341	B. T. MANCINI CO. INC., Sacramento, Calif. ³²⁷	O	112.8	100.0	100	0	0	0	0	0	0	0	0	0	
328	342	DOUGLASS COLONY GROUP, Commerce City, Colo.	R/SH	111.8	78.0	100	0	0	0	0	0	0	0	0	0	
329	309	PDM CONSTRUCTORS INC., North Wales, Pa.	W	111.7	50.1	100	0	0	0	0	0	0	0	0	0	
330	**	VOLLERS EXCAVATING AND CONSTRUCTION CO., Branchburg, N.J.	X	111.0	NA	85	3	0	5	2	3	1	1	0	0	
331	299	J&E COMPANIES, Grand Prairie, Texas	MA/W	110.8	156.8	100	0	0	0	0	0	0	0	0	0	
332	288	RUTTURA & SONS CONSTRUCTION CO. INC., West Babylon, N.Y.	C/X	110.6	164.4	92	2	2	0	0	0	4	0	0	0	
333	302	GRAYDAZE CONTRACTING INC., Roswell, Ga.	P	110.5	120.5	60	15	0	0	0	0	0	0	0	25	
334	287	MASON CONSTRUCTION LLC, Beaumont, Texas	C/X/FN	110.0	92.0	5	0	1	0	0	91	3	0	0	0	
335	380	GEO-SOLUTIONS INC., New Kensington, Pa.	A	110.0	NA	0	0	0	0	0	0	0	0	0	0	
336	354	IMS MASONRY INC., Lindon, Utah	MA	109.3	87.2	93	0	0	0	3	2	2	0	0	0	
337	264	UNITED FORMING INC., Austell, Ga.	C	108.0	61.0	100	0	0	0	0	0	0	0	0	0	
338	428	KOVACH ENCLOSURE SYSTEM, Chandler, Ariz.	SH/G	107.8	110.0	60	20	0	0	0	20	0	0	0	0	
339	332	ALLOY, Export, Pa.	D/A	107.1	117.2	40	20	0	0	10	20	5	5	0	0	
340	253	HARTMAN WALSH PAINTING CO., St. Louis, Mo.	P	106.0	65.0	0	10	20	30	0	25	0	0	0	0	
341	311	DEE CRAMER, Holly, Mich.	SH	105.4	100.8	75	20	0	0	0	5	0	0	0	0	
342	**	HA SACK CO. LLC, Statesboro, Ga.	M/E	104.6	143.4	75	20	0	0	0	5	0	0	0	0	
343	349	ACME CONSTRUCTORS INC., St. Louis, Mo.	M	104.0	96.0	4	34	25	0	0	32	0	5	0	0	
344	272	DUCCI ELECTRICAL CONTRACTORS INC., Farmington, Conn.	E	104.0	124.2	45	0	0	0	0	0	45	0	10		
345	397	BAUER FOUNDATION CORP., Odessa, Fla.	FN	103.6	41.3	26	17	0	50	0	0	8	0	0	0	
346	270	SERETTA CONSTRUCTION INC., Apopka, Fla.	C	103.5	86.8	75	25	0	0	0	0	0	0	0	0	
347	**	REIDY CONTRACTING GROUP, New York, N.Y. ³⁴⁷	I	103.5	NA	100	0	0	0	0	0	0	0	0	0	
348	422	GSL ELECTRIC, Sandy, Utah	E	102.9	162.0	85	0	0	0	0	10	0	0	0	5	
349	400	HACI MECHANICAL CONTRACTORS INC., Phoenix, Ariz.	M	102.4	46.7	69	25	0	3	3	0	0	0	0	0	
350	338	VENTANA, Chicago, Ill.	G	102.3	NA	100	0	0	0	0	0	0	0	0	0	

FOOTNOTES: 307 = INSULATION; 311 = CLEARING, PAVING OTHER SUBS; 312 = PLATE STEEL & TANKS, RAILROAD, SCAFFOLD, REFRACTORY; 313 = TELECOMMUNICATIONS; 316 = FOOD SERVICE EQUIPMENT; 326 = ENGINEERING/DESIGN; 327 = METAL DECK, RAIN SCREEN, FLOORING, MISC.; 347 = SELF-PERFORMED SUPPORT SCOPE INCLUDING GENERAL CONDITIONS, LABOR, FEE, INSURANCE, AND MISCELLANEOUS NON-TRADE-SPECIFIC WORK TIED TO SPECIALTY CONTRACTING PACKAGES.

RANK 2025	RANK 2024	FIRM	FIRM TYPE	2024 REVENUE (\$ MIL)		MARKETS (% OF 2024 REVENUE)									
				TOTAL REVENUE	NEW CONTRACTS	GENERAL BUILDING	MANUFACTURING	POWER	WATER SUPPLY	SEWER / WASTE	INDUS. / PETROLEUM	TRANSPORTATION	HAZARDOUS WASTE	TELECOM	
351	398	WYATT INC., Pittsburgh, Pa. ³⁵¹	W/I/O	102.0	81.0	97	0	0	0	3	0	0	0	0	0
352	351	WHITE ELECTRICAL CONSTRUCTION CO., Atlanta, Ga.	E	101.6	89.3	4	15	36	0	12	23	8	0	2	
353	376	CENTERLINE INC., Palm City, Fla.	U	100.1	120.1	45	0	0	55	0	0	0	0	0	
354	335	JACOBSON & CO. INC., Elizabeth, N.J.	W	99.7	NA	100	0	0	0	0	0	0	0	0	
355	330	AMERICAN PILE AND FOUNDATION LLC, Somerville, N.J.	FN	99.6	46.6	3	0	28	0	0	0	67	0	0	
356	340	APG, Clearwater, Fla.	E	98.6	98.6	70	0	0	0	0	0	20	0	10	
357	364	SCHLOUCH INC., Blandon, Pa. ³⁵⁷	U/X	98.5	137.8	48	1	4	6	19	0	23	0	0	
358	480	STONEBRIDGE INC., S. Plainfield, N.J.	ST	98.4	20.0	60	10	0	0	0	0	30	0	0	
359	310	HARDROCK CONCRETE PLACEMENT CO. INC., Phoenix, Ariz.	C	97.9	53.6	100	0	0	0	0	0	0	0	0	
360	378	BIERLEIN COS. INC., Midland, Mich.	D	96.6	63.0	32	16	12	0	0	40	0	0	0	
361	301	MARTELL SERVICES GROUP INC., South Bend, Ind.	M/E	95.6	110.0	61	10	5	0	0	5	12	0	7	
362	**	M. G. MCGRATH INC., Maplewood, Minn.	SH/G	95.0	140.0	90	0	0	0	0	0	5	0	5	
363	381	OTTO BAUM CO. INC., Morton, Ill. ³⁶³	MA/O	95.0	64.0	72	0	0	0	0	0	28	0	0	
364	313	JOHNSON AND JORDAN INC., Scarborough, Maine	M	94.9	65.5	100	0	0	0	0	0	0	0	0	
365	346	ALEX E. PARIS CONTRACTING CO., Atlasburg, Pa.	U/X	93.3	114.0	44	8	0	20	1	27	0	0	0	
366	**	OWEN STEEL COMPANY INC., Columbia, S.C.	ST	93.2	42.9	70	15	0	0	0	0	15	0	0	
367	357	BARNUM & CELILLO ELECTRIC INC., Sacramento, Calif.	E	93.2	73.6	60	10	10	0	0	10	0	0	0	
368	409	TLC DIVERSIFIED, Palmetto, Fla.	U	93.1	152.6	0	0	0	28	72	0	0	0	0	
369	393	WESTERN ALLIED CORP., Santa Fe Springs, Calif.	M/SH	92.4	96.2	98	2	0	0	0	0	0	0	0	
370	417	FRISCHHERTZ ELECTRIC CO. INC., New Orleans, La.	E	91.4	129.4	90	0	0	0	0	0	0	0	10	
371	407	RHP MECHANICAL SYSTEMS, Reno, Nev.	M	91.2	120.0	100	0	0	0	0	0	0	0	0	
372	359	BAYVIEW SERVICES, Oakland, Calif.	D/A	91.0	91.0	45	0	1	1	0	0	2	51	0	
373	363	TAYLOR ELECTRIC INC., Salt Lake City, Utah	E	90.8	74.3	84	0	0	0	0	0	12	0	4	
374	**	GREINER ELECTRIC, Littleton, Colo.	E	90.4	35.0	80	5	0	0	0	0	5	0	10	
375	423	SUPERIOR RIGGING & ERECTING CO., Atlanta, Ga. ³⁷⁵	ST/O	90.2	128.6	25	10	5	0	0	10	10	0	40	
376	374	AMPCO CONTRACTING INC., Irvine, Calif.	D	90.0	150.0	72	3	1	0	1	13	0	10	0	
377	404	ROCK SOLID STABILIZATION AND RECLAMATION, Genoa City, Wis. ³⁷⁷	O	89.9	95.4	65	0	25	0	0	0	10	0	0	
378	430	PIONEER CLADDING & GLAZING SYSTEMS, Mason, Ohio	G	88.5	119.8	0	0	0	0	0	100	0	0	0	
379	403	PHILIPS BROTHERS ELECTRICAL CONTRACTORS INC., Glenmoore, Pa.	E	88.4	48.4	55	0	5	15	15	0	10	0	0	
380	321	THE CIRCLE GROUP, Alpharetta, Ga.	W	87.7	58.6	100	0	0	0	0	0	0	0	0	
381	319	SKODA CONTRACTING, Flanders, N.J.	U	87.5	96.5	0	0	0	0	0	0	0	0	0	
382	331	SIERRA PACIFIC WEST INC., Vista, Calif.	X	86.7	25.3	100	0	0	0	0	0	0	0	0	
383	436	W. D. MANOR MECHANICAL CONTRACTORS INC., Phoenix, Ariz.	M/SH	85.0	85.0	75	25	0	0	0	0	0	0	0	
384	379	R. W. WARNER INC., Frederick, Md.	M	84.3	74.9	70	20	0	0	0	0	10	0	0	
385	452	AREA ERECTORS INC., Rockford, Ill.	ST	84.1	NA	60	40	0	0	0	0	0	0	0	
386	292	DANKO CONCRETE CONSTRUCTION, Newnan, Ga.	C	83.2	83.2	60	40	0	0	0	0	0	0	0	
387	411	VALIANT ENERGY SERVICE, Allentown, Penn.	E	82.5	66.9	0	0	0	0	0	0	100	0	0	
388	333	INTERNATIONAL ASBESTOS REMOVAL INC., Babylon, N.Y. ³⁸⁸	O	82.4	90.2	25	0	10	0	5	0	35	15	0	
389	**	ESCO CONSTRUCTION CO., Evergreen, Colo.	U/X	81.2	99.0	49	24	0	6	5	0	16	0	0	
390	372	BUILDERS PLUS INC., Boynton Beach, Fla. ³⁹⁰	O	80.5	76.3	100	0	0	0	0	0	0	0	0	
391	385	XCEL MECHANICAL SYSTEMS INC., Gardena, Calif.	M	80.1	63.2	100	0	0	0	0	0	0	0	0	
392	**	CORRIGAN CO., St. Louis, Mo.	M	80.0	125.0	0	20	10	10	20	40	0	0	0	
393	472	ARCHITECTURAL WALL SYSTEMS LLC, Grimes, Iowa	G	79.4	20.1	100	0	0	0	0	0	0	0	0	
394	**	JUNIOR STEEL CO., Gardena, Calif.	ST	79.0	84.0	75	0	0	0	0	0	15	0	0	
395	435	PENCE/KELLY CONCRETE LLC, Lake Oswego, Ore.	C	78.9	107.3	83	0	0	0	0	0	0	0	17	
396	**	ASCHER BROTHERS CO. INC., Chicago, Ill.	P	78.6	71.0	100	0	0	0	0	0	0	0	0	
397	434	WIEGMANN ASSOCIATES, St. Charles, Mo.	M	78.6	63.7	100	0	0	0	0	0	0	0	0	
398	**	KE GUTTRIDGE LLC, Hilliard, Ohio	M	78.4	113.6	55	0	0	0	0	0	0	0	45	
399	356	ALAKAI MECHANICAL CORP., Honolulu, Hawaii	M/SH	78.0	52.6	95	0	0	0	0	0	5	0	0	
400	350	RUSTON PAVING CO. INC., Durham, N.C. ⁴⁰⁰	O	76.2	80.0	0	10	0	0	0	0	90	0	0	

FOOTNOTES: 351 = EXTERIOR PANEL SYSTEMS; 357 = ASPHALT PAVING; 363 = CIVIL - ROADS & BRIDGES; 374 = CRANE & RIGGING; 375 = SOIL STABILIZATION AND MODIFICATION; 388 = INSULATION OF MECHANICAL/PLUMBING SYSTEMS; 390 = TILT UP; 400 = 90% ASPHALT PAVING, 10% SOIL STABILIZATION.

#319

AIRO MECHANICAL was acquired
by private equity firm CCMP Growth
Advisors earlier this year.

RANK 2025	RANK 2024	FIRM	FIRM TYPE	2024 REVENUE (\$ MIL)		MARKETS (% OF 2024 REVENUE)									
				TOTAL REVENUE	NEW CONTRACTS	GENERAL BUILDING	MANUFACTURING	POWER	WATER SUPPLY	SEWER / WASTE	INDUS. / PETROLEUM	TRANSPORTATION	HAZARDOUS WASTE	TELECOM	
401	427	CR LIGHTING & ELECTRIC INC., Layton, Utah	E	76.1	70.0	95	0	0	0	0	0	5	0	0	0
402	386	FLY & FORM CONCRETE STRUCTURES INC., Atlanta, Ga.	C	76.1	66.1	100	0	0	0	0	0	0	0	0	0
403	507	ACME ELECTRIC CO., Lubbock, Texas	E	75.3	125.6	40	0	0	0	60	0	0	0	0	0
404	412	ISI DEMOLITION, White Marsh, Md.	D	75.2	55.1	85	5	0	0	0	5	5	0	0	0
405	**	UNITED GRADING AND EXCAVATING, Ellenwood, Ga.	X	74.9	99.6	100	0	0	0	0	0	0	0	0	0
406	410	CAPASSO ENTERPRISES INC., Middletown, Conn.	C	74.5	74.5	50	10	10	0	5	10	5	0	0	5
407	418	KOONTZ ELECTRIC CO. INC., Morrilton, Ark.	E	74.5	53.8	0	0	77	0	23	0	0	0	0	0
408	361	ASSOCIATED MECHANICAL CONTRACTORS INC., Shakopee, Minn.	M	74.4	54.6	95	5	0	0	0	0	0	0	0	0
409	370	BONLAND INDUSTRIES INC., Wayne, N.J.	SH	74.3	70.3	77	8	0	0	0	0	0	0	0	0
410	392	ACKERMAN TRADE SERVICES, Sarasota, Fla.	M	74.2	75.0	95	0	0	0	0	0	5	0	0	0
411	438	MILLERCLAPPERTON, Austell, Ga.	W	73.4	61.8	100	0	0	0	0	0	0	0	0	0
412	389	GROUP BUILDERS INC., Honolulu, Hawaii	W/I	72.6	94.3	100	0	0	0	0	0	0	0	0	0
413	433	CJ DRILLING INC., Dundee, Ill.	FN	72.4	98.2	2	0	0	0	0	0	2	0	0	0
414	406	MEISNER ELECTRIC INC., Boca Raton, Fla.	E	70.2	85.6	89	0	0	0	0	0	0	0	0	3
415	391	HARRISON CONTRACTING, Villa Rica, Ga.	P	69.8	66.4	100	0	0	0	0	0	0	0	0	0
416	**	DELAWARE ELEVATOR INC., Salisbury, Md. ⁴¹⁶	O	69.4	71.9	0	0	0	0	0	0	0	0	0	0
417	401	CURTIS PARTITION CORP., New York, N.Y.	W	69.1	53.4	50	0	0	0	0	0	50	0	0	0
418	475	AARON ENTERPRISES INC., York, Pa. ⁴¹⁸	X/O	69.0	75.0	0	0	0	0	0	0	30	0	0	30
419	432	DECCO INC., Nashua, N.H.	M	68.6	NA	0	100	0	0	0	0	0	0	0	0
420	424	BRAZOS MASONRY, Waco, Texas	MA	68.5	62.0	80	10	0	0	0	10	0	0	0	0
421	426	MCALVAIN CONCRETE INC., Boise, Idaho	C	68.0	NA	0	0	0	0	0	0	0	0	0	0
422	451	ROOFED RIGHT AMERICA, Milwaukee, Wis.	R	67.0	67.0	14	60	2	1	1	17	2	1	1	2
423	413	TAP ELECTRICAL CONTRACTING SERVICE, Islandia, N.Y.	E	66.6	137.0	20	0	0	0	0	0	80	0	0	0
424	408	CULLUM MECHANICAL CONSTRUCTION INC., North Charleston, S.C.	M	66.3	52.9	25	60	0	0	0	15	0	0	0	0
425	390	SOWLES CO., Shakopee, Minn.	ST	66.2	29.0	40	10	0	0	0	50	0	0	0	0
426	394	CANTERA CONCRETE CO., Tulsa, Okla.	C	65.8	57.2	90	5	0	0	0	5	0	0	0	0
427	388	AVALOTIS CORP., Verona, Pa.	P	65.0	44.0	0	0	50	0	0	20	20	0	0	0
428	460	FERGUSON TRENCHING CO., Odenton, Md.	U	65.0	9.5	100	0	0	0	0	0	0	0	0	0
429	373	HEMMA CONCRETE INC., Marietta, Ga.	C	64.6	64.9	100	0	0	0	0	0	0	0	0	0
430	377	PILLAR CONSTRUCTION INC., Alexandria, Va.	W	63.2	172.0	100	0	0	0	0	0	0	0	0	0
431	456	SHAW & SONS INC., Costa Mesa, Calif.	C	62.5	NA	100	0	0	0	0	0	0	0	0	0
432	395	FLORENCE ELECTRIC & KAYDON INTEGRATED TECH., Canton, Mass.	E	62.5	44.7	80	0	0	0	0	0	0	0	0	20
433	425	JGM FABRICATORS & CONSTRUCTORS, Coatesville, Pa.	ST	62.2	89.9	20	20	10	0	0	30	20	0	0	0
434	455	CENTRAL CEILINGS INC., South Easton, Mass.	W	61.9	60.2	100	0	0	0	0	0	0	0	0	0
435	477	MIDSTATE MECHANICAL LLC, Phoenix, Ariz.	M	61.8	60.9	98	0	0	0	2	0	0	0	0	0
436	453	CENTURY MECHANICAL CONTRACTORS INC., Fort Worth, Texas	M	61.8	83.3	85	15	0	0	0	0	0	0	0	0
437	464	GDA CONTRACTORS, Grand Prairie, Texas ⁴³⁷	O	61.5	73.0	65	25	0	2	3	0	0	0	0	5
438	**	BYERS INDUSTRIAL SERVICES, Franklinville, N.J.	M/E	61.4	85.2	0	30	5	0	0	40	10	0	0	15
439	469	LEED ELECTRIC INC., Santa Fe Springs, Calif.	E	61.1	95.2	0	0	2	24	70	4	0	0	0	0
440	503	EXTREME STEEL INC., Winchester, Va.	ST	61.0	59.5	57	0	13	0	0	0	0	0	0	0
441	399	KIMMINS CONTRACTING CORP., Tampa, Fla.	U	60.8	98.0	15	0	0	40	40	0	5	0	0	0
442	367	INDUSTRIAL CONSTRUCTORS/MANAGERS INC., Commerce City, Colo. ⁴⁴²	O	60.6	81.2	0	54	19	0	0	6	18	0	0	0
443	459	ROTOLO CONSULTANTS INC. (RCI), Slidell, La. ⁴⁴³	O	60.5	43.0	100	0	0	0	0	0	0	0	0	0
444	**	WOLVERINE FIRE PROTECTION CO., Mount Morris, Mich.	F	60.5	70.7	60	20	0	0	0	0	20	0	0	0
445	**	SPS CORP., Apex, N.C.	G	60.3	83.5	23	77	0	0	0	0	0	0	0	0
446	478	ACOUSTIC CEILING AND PARTITION CO., Ann Arbor, Mich.	W	60.1	49.5	65	35	0	0	0	0	0	0	0	0
447	461	INTERSTATE MECHANICAL LLC, Phoenix, Ariz.	M/SH	60.0	35.8	80	10	0	0	0	0	5	0	0	5
448	512	CERTIFIED INTERIORS INC., Holbrook, N.Y.	W/I	59.8	57.0	85	0	0	0	0	0	15	0	0	0
449	402	TELLIGENT MASONRY LLC, Rockville, Md.	MA	59.8	38.0	100	0	0	0	0	0	0	0	0	0
450	445	COMMERCIAL ROOFERS INC., Las Vegas, Nev.	R	59.6	67.0	80	0	0	0	5	10	5	0	0	0

FOOTNOTES: 418 = ELEVATORS; 419 = BORING, TUNNELING, HORIZONTAL DRILLING; 437 = MOISTURE PROTECTION; 442 = MILLWRIGHT; 443 = LANDSCAPE (63%); AQUATICS (37%);

RANK 2025	RANK 2024	FIRM	FIRM TYPE	2024 REVENUE (\$ MIL)		MARKETS (% OF 2024 REVENUE)									
				TOTAL REVENUE	NEW CONTRACTS	GENERAL BUILDING	MANUFACTURING	POWER	WATER SUPPLY	SEWER / WASTE	INDUS. / PETROLEUM	TRANSPORTATION	HAZARDOUS WASTE	TELECOM	
451	449	JOHNSON-DAVIS INC., Lantana, Fla.	U	58.9	68.3	0	0	0	55	45	0	0	0	0	0
452	473	DAIDONE ELECTRIC INC., Newark, N.J.	E	58.8	89.6	0	0	0	0	0	0	96	0	4	
453	446	VALDEZ PAINTING INC., Sacramento, Calif.	P	58.7	41.8	100	0	0	0	0	0	0	0	0	
454	421	GREGORY ELECTRIC CO. INC., Columbia, S.C.	E	58.3	38.0	30	0	30	0	0	30	0	0	10	
455	343	WHITAKER ELLIS BUILDERS INC., Tigard, Ore.	C	58.1	43.5	46	7	0	0	0	0	0	0	6	
456	**	GRIBBINS INSULATION AND SCAFFOLDING, Evansville, Ind. ⁴⁵⁶	O	58.1	NA	20	10	20	0	0	50	0	0	0	
457	441	UNITED CHESTER INDUSTRIES INC. DBA UNIVENT MECHANICAL, Dallas, Texas	M	57.6	55.1	30	20	0	0	0	30	0	0	20	
458	454	HILL FIRE PROTECTION LLC, Franklin Park, Ill.	F	57.5	NA	100	0	0	0	0	0	0	0	0	
459	429	THOMAS INDUSTRIAL COATINGS INC., Pevely, Mo.	P	57.5	80.0	1	2	4	5	2	50	36	0	0	
460	431	SUNWEST ELECTRIC INC., Anaheim, Calif.	E	57.1	39.3	75	10	0	0	0	15	0	0	0	
461	489	THE HOLBROOK CO. INC., Grand Prairie, Texas	X	55.8	NA	93	0	0	0	0	0	7	0	0	
462	419	RIGHT WAY PLUMBING & MECHANICAL LLC, Sunrise, Fla.	M	55.7	65.0	100	0	0	0	0	0	0	0	0	
463	448	SWANSON & YOUNGDALE, St. Louis Park, Minn.	P/W	55.5	57.8	53	30	0	5	0	7	5	0	0	
464	440	NORTH AMERICAN DISMANTLING CORP., Lapeer, Mich.	D	55.4	26.7	15	25	20	0	0	35	0	0	0	
465	466	ADAMO DEMOLITION CO., Detroit, Mich.	D/A	55.3	43.2	20	25	20	0	0	25	10	0	0	
466	**	UNIVERSAL BUILDERS SUPPLY, New Rochelle, N.Y. ⁴⁶⁶	O	55.0	62.0	100	0	0	0	0	0	0	0	0	
467	**	CP RANKIN, Chalfont, Pa.	R	54.2	35.1	0	0	0	0	0	0	0	0	0	
468	458	O'ROURKE WRECKING CO., Cincinnati, Ohio	D	54.0	50.0	50	0	0	0	10	20	20	0	0	
469	443	PRO-CRAFT CONSTRUCTION INC., Redlands, Calif.	M/U	53.9	NA	100	0	0	0	0	0	0	0	0	
470	368	COMPREHENSIVE ENERGY SERVICES INC., Longwood, Fla.	M	52.8	45.5	0	0	0	0	0	0	0	0	0	
471	467	FOUNTAIN CONSTRUCTION CO. INC., Jackson, Miss. ⁴⁷¹	E/O	51.6	63.7	99	1	0	0	0	0	0	0	0	
472	481	NICKLE ELECTRICAL COS., Newark, Del.	E	49.4	67.0	80	10	5	0	0	0	0	0	5	
473	486	PRECISION ENVIRONMENTAL CO., Independence, Ohio	A	49.1	29.8	0	0	0	0	0	0	0	100	0	
474	415	E. CORNELL MALONE CORP., Richland, Miss.	R	49.1	50.0	55	15	0	0	0	25	0	0	0	
475	549	MJ MECHANICAL, Hutto, Texas	M	48.3	91.6	100	0	0	0	0	0	0	0	0	
476	547	AGGREGATE RESOURCE INDUSTRIES INC., Springfield, Ore. ⁴⁷⁶	O	48.3	46.4	12	0	40	0	0	0	12	0	0	
477	444	PTE SYSTEMS INTL. LLC, Hialeah, Fla. ⁴⁷⁷	O	48.0	49.0	100	0	0	0	0	0	0	0	0	
478	528	ALL STATE CONSTRUCTION INC., Farmington, Conn.	M	48.0	46.5	80	10	5	0	5	0	0	0	0	
479	476	BOUMA CORP., Grand Rapids, Mich.	W	47.4	45.2	100	0	0	0	0	0	0	0	0	
480	513	ATS DRILLING INC., Fort Worth, Texas	FN	47.1	25.3	0	0	0	0	0	0	100	0	0	
481	508	RKS PLUMBING AND MECHANICAL INC., Glendale, Ariz.	M	47.0	48.0	45	5	0	5	0	5	0	0	0	
482	554	GRAZZINI BROTHERS & CO., St. Paul, Minn. ⁴⁸²	O	46.6	43.3	93	3	0	0	1	0	3	0	0	
483	487	JACKSON DEMOLITION SERVICE INC., Schenectady, N.Y.	D	46.4	93.2	9	0	89	0	0	2	0	0	0	
484	522	WM. A. J. SHAEFFER'S SONS INC., King Of Prussia, Pa.	E	46.2	183.8	100	0	0	0	0	0	0	0	0	
485	494	UNITED SERVICES GROUP, Charlotte, N.C. ⁴⁸⁵	M	45.6	58.2	0	15	5	0	0	80	0	0	0	
486	**	SAUER MECHANICAL LLC, Jacksonville, Florida	M	45.4	61.0	10	30	0	0	0	0	0	0	0	
487	493	SCHWAGER DAVIS INC., San Jose, Calif. ⁴⁸⁷	O	45.2	NA	20	0	5	0	0	5	70	0	0	
488	483	SHELLEY ELECTRIC INC., Wichita, Kan.	E	45.0	55.0	10	10	0	0	60	20	0	0	0	
489	371	NATIONAL STEEL CITY LLC, Plymouth, Mich.	ST	44.5	35.0	0	100	0	0	0	0	0	0	0	
490	**	SPIRTAS WRECKING CO., Valley Park, Mo.	D	44.0	30.7	25	0	40	0	0	0	25	10	0	
491	465	TEXAS SCENIC CO., San Antonio, Texas ⁴⁹¹	O	43.5	29.5	100	0	0	0	0	0	0	0	0	
492	485	WAYNE'S ROOFING INC., Sumner, Wash.	R	43.4	27.9	100	0	0	0	0	0	0	0	0	
493	495	MID-CONTINENTAL RESTORATION CO. INC., Fort Scott, Kan.	MA	42.8	41.4	100	0	0	0	0	0	0	0	0	
494	**	BARIN GROUP, Pocatello, Idaho	M	42.6	5.1	4	23	2	0	3	67	0	0	1	
495	416	RECREATIONAL DESIGN & CONSTRUCTION, Ft. Lauderdale, Fla. ⁴⁹⁵	O	42.4	44.2	0	0	0	0	0	0	0	0	0	
496	537	ASCENDENT DEMOLITION, Puyallup, Wash.	D/A	42.4	22.3	60	10	0	0	5	0	25	0	0	
497	540	REMBCO GEOTECHNICAL CONTRACTORS INC., Powell, Tenn. ⁴⁹⁷	FN/O	42.3	52.3	100	0	0	0	0	0	0	0	0	
498	501	BROWNING CHAPMAN LLC, Westfield, Ind. ⁴⁹⁸	MA/O	42.2	48.9	85	15	0	0	0	0	0	0	0	
499	514	MSL ELECTRIC INC., Anaheim, Calif.	E	42.1	51.3	0	0	0	0	0	0	100	0	0	
500	499	BERG DEMO GROUP, Baltimore, Md.	D	41.6	60.0	100	0	0	0	0	0	0	0	0	

FOOTNOTES: **466** = MECHANICAL INSULATION AND SCAFFOLDING; **468** = SCAFFOLDING, HOISTING, ACCESS, SAFETY; **471** = GENERAL CONSTRUCTION; **476** = DRILLING AND BLASTING; **477** = POST-TENSIONING, BARRIER CABLES & SHEAR RAIL REINFORCING; **482** = SPECIALTY CONTRACTOR; **485** = HEAT TREATMENT & MACHINING; **487** = POST-TENSIONING, BARRIER CABLE, TRANSIT, UTILITY AND ENERGY PROJECTS; **491** = THEATRICAL EQUIPMENT; **495** = SOIL STABILIZATION, GROUND IMPROVEMENT, ANCHORING; **498** = PARKING GARAGE RESTORATION/CONCRETE FLOOR POLISH/JOINT SEALANTS/RESINOUS COATINGS/SPORTS FLOORING;

#324

OPTILINE ENTERPRISES
 announced the elevation of Leo Marchesseault to CEO on Sept. 30. He was chief operating officer.

MARKETS (% OF 2024 REVENUE)

RANK 2025	RANK 2024	FIRM	FIRM TYPE	2024 REVENUE (\$ MIL)		MARKETS (% OF 2024 REVENUE)										
				TOTAL REVENUE	NEW CONTRACTS	GENERAL BUILDING	MANUFACTURING	POWER	WATER SUPPLY	SEWER / WASTE	INDUS. / PETROLEUM	TRANSPORTATION	HAZARDOUS WASTE	TELECOM		
501	518	AJAY GLASS CO., Canandaigua, N.Y.	G	41.6	36.2	100	0	0	0	0	0	0	0	0	0	0
502	524	W. B. GUIMARIN & CO. INC., Columbia, S.C.	M	41.3	27.4	65	35	0	0	0	0	0	0	0	0	0
503	567	PRIMUS BUILDERS INC. PANEL DIVISION, Woodstock, Ga. ⁵⁰³	O	41.2	17.5	0	0	0	0	0	0	0	0	0	0	0
504	535	KC PAINTING & COATINGS, Alpharetta, Ga.	P	41.0	38.6	50	49	0	0	1	0	0	0	0	0	0
505	**	5 POINTS ELECTRICAL CO. Norcross, Ga.	E	40.5	14.9	91	0	0	0	0	0	0	0	0	0	9
506	468	PIPE STRONG, Schaumburg, Ill.	U	40.0	50.0	0	0	0	0	0	100	0	0	0	0	0
507	474	DUAL TEMP CO., Allentown, Pa.	M	39.9	NA	100	0	0	0	0	0	0	0	0	0	0
508	484	PARC ENVIRONMENTAL, Fresno, Calif. ⁵⁰⁸	A	39.9	36.2	25	0	0	0	0	0	0	0	75	0	0
509	471	GRUNDMAN MECHANICAL SYSTEMS INC., Thornwood, N.Y.	M	39.8	52.7	100	0	0	0	0	0	0	0	0	0	0
510	517	OHIO VALLEY ELECTRICAL SERVICES INC., Cincinnati, Ohio	E	39.8	44.4	45	43	0	0	0	0	12	0	0	0	0
511	**	ARAGON CONSTRUCTION, Montclair, Calif.	G	39.4	32.0	100	0	0	0	0	0	0	0	0	0	0
512	516	APEX STEEL INC., Kirkland, Wash.	ST	39.3	27.8	50	0	0	0	0	0	0	50	0	0	0
513	541	THE WITMER GROUP, Mount Joy, Pa.	MA	39.1	NA	70	20	0	0	0	0	10	0	0	0	0
514	523	NATIONAL COATINGS INC., Raleigh, N.C.	P	38.7	30.3	0	0	0	0	0	0	0	0	0	0	0
515	498	SOUTH VALLEY, Centennial, Colo.	W	38.5	60.0	100	0	0	0	0	0	0	0	0	0	0
516	506	HOOVER CONSTRUCTION CO., Virginia, Minn. ⁵¹⁶	X/O	38.4	43.0	1	0	1	0	0	97	1	0	0	0	0
517	531	DEL MONTE ELECTRIC CO., Dublin, Calif.	E	37.9	54.7	97	0	0	0	0	0	0	0	0	0	0
518	581	FORTHRIGHT ENVIRONMENTAL SERVICES, Beaverton, Mich. ⁵¹⁸	A	37.7	NA	88	0	0	0	0	9	0	0	0	3	0
519	562	MH CIVIL CONSTRUCTORS INC., Amarillo, Texas ⁵¹⁹	U	37.3	NA	0	0	0	70	30	0	0	0	0	0	0
520	**	GIBSON LANDSCAPE, Alpharetta, Ga. ⁵²⁰	C/O	37.1	NA	100	0	0	0	0	0	0	0	0	0	0
521	**	CLARK FOUNDATIONS LLC, McLean, Va.	X	36.9	40.7	0	0	0	0	0	0	0	0	0	0	0
522	497	THE PIPCO COS. LTD., Peoria, Ill.	SH/F	36.6	39.7	45	25	0	5	5	15	5	0	0	0	0
523	450	ALLIANCE PARTITION SYSTEMS, Arlington, Wash.	W	36.5	21.6	99	0	0	0	0	0	1	0	0	0	0
524	544	ASSOCIATED MECHANICAL CONTRACTORS INC., Montgomery, Ala.	M	36.4	22.7	100	0	0	0	0	0	0	0	0	0	0
525	491	CSE INC., Madison Heights, Va.	ST	36.2	32.4	20	33	0	0	5	42	0	0	0	0	0
526	568	HEGGEM-LUNDQUIST, Denver, Colo.	W/ST	36.2	36.2	100	0	0	0	0	0	0	0	0	0	0
527	539	THE ROCKWELL GROUP INC., Freeport, Ill.	W	35.8	22.6	100	0	0	0	0	0	0	0	0	0	0
528	502	MARR SCAFFOLDING CO., South Boston, Mass. ⁵²⁸	O	35.5	35.5	100	0	0	0	0	0	0	0	0	0	0
529	534	JD TRADITIONAL INDUSTRIES, Ronkonkoma, N.Y.	W	34.9	23.0	100	0	0	0	0	0	0	0	0	0	0
530	504	PSI PACIFIC SYSTEMS INTERIOR, San Dimas, Calif.	W	34.6	36.4	100	0	0	0	0	0	0	0	0	0	0
531	543	HAMPSHIRE FIRE PROTECTION CO., Londonderry, N.H.	F	34.5	38.6	100	0	0	0	0	0	0	0	0	0	0
532	479	PENINGTON PAINTING CO., Chandler, Ariz.	W	34.5	2.9	6	86	0	0	8	0	0	0	0	0	0
533	470	NATIONAL ENCLOSURE CO., Ypsilanti, Mich.	G	34.4	27.0	100	0	0	0	0	0	0	0	0	0	0
534	545	BUILDING CONTROL INTEGRATORS, Powell, Ohio ⁵³⁴	O	34.1	42.1	80	10	0	0	0	0	0	0	0	0	10
535	500	CERTIFIED COATINGS CO., Fairfield, Calif.	P	34.0	25.0	0	0	0	10	0	0	90	0	0	0	0
536	405	CARL WALKER CONSTRUCTION, Pittsburgh, Pa. ⁵³⁶	O	33.6	33.6	100	0	0	0	0	0	0	0	0	0	0
537	510	NICKELL COMPANY LLC, Columbia, Tenn. ⁵³⁷	C/O	33.5	33.5	50	0	0	0	0	0	50	0	0	0	0
538	511	TSI CORPS., Upper Marlboro, Md.	G	32.7	10.3	95	5	0	0	0	0	0	0	0	0	0
539	505	SOEP PAINTING CORP, Lawrence, Mass. ⁵³⁹	P	32.5	65.9	86	0	1	0	13	0	0	0	0	0	0
540	525	JERRY THOMPSON & SONS, San Rafael, Calif.	P	32.3	28.7	100	0	0	0	0	0	0	0	0	0	0
541	559	ARCHITECTURAL FABRICATION, Fort Worth, Texas ⁵⁴¹	O	32.1	34.7	100	0	0	0	0	0	0	0	0	0	0
542	566	ADVANCED EXTERIORS & GLAZING OF NEW ENGLAND, Salem, N.H.	G	32.0	50.0	100	0	0	0	0	0	0	0	0	0	0
543	**	PREMIUM CONCRETE INC., St. Charles, Ill.	C	32.0	NA	50	20	0	0	0	0	10	0	0	20	0
544	556	D.W. NICHOLSON CORP., Hayward, Calif. ⁵⁴⁴	M	31.6	49.5	35	4	0	0	15	6	0	40	0	0	0
545	577	DELPHI PLUMBING & HEATING INC., Brooklyn, N.Y.	M	31.4	82.0	5	0	0	0	95	0	0	0	0	0	0
546	**	RELIANCE INTERIORS, Acworth, Ga.	W	31.4	24.5	100	0	0	0	0	0	0	0	0	0	0
547	546	JOHN SMITH MASONRY, St. Louis, Mo.	MA	31.3	31.3	78	10	0	0	12	0	0	0	0	0	0
548	571	FUTURE FENCE CO., Warren, Mich. ⁵⁴⁸	O	31.0	32.5	0	0	0	0	0	0	0	0	0	0	0
549	530	WALLWORKS, Media, Pa.	W	30.9	22.5	100	0	0	0	0	0	0	0	0	0	0
550	496	ICI LLC, Arvada, Colo.	W	30.7	34.0	100	0	0	0	0	0	0	0	0	0	0

FOOTNOTES: 503 = INSULATED METAL PANEL INSTALLATION; 506 = NOT REPORTED; 516 = DRILLING AND BLASTING; 518 = INSULATION, CARPENTRY, FLOOR REMOVAL; 519 = EROSION CONTROL; 520 = LANDSCAPE; 528 = SCAFFOLD, SHORING, AERIAL LIFTS, MAST CLIMBERS; 534 = TEMPERATURE CONTROLS; 536 = PARKING GARAGE RESTORATION; 537 = ASPHALT PAVING; 539 = SPRAYFOAM INSULATION; 541 = DIV 10 - EXTERIOR ALUMINUM CANOPIES, SUNSHADES, AND METAL AWNINGS; 544 = DOORS; 548 = FENCE.

RANK 2025	RANK 2024	FIRM	FIRM TYPE	2024 REVENUE (\$ MIL)		MARKETS (% OF 2024 REVENUE)										
				TOTAL REVENUE	NEW CONTRACTS	GENERAL BUILDING	MANUFACTURING	POWER	WATER SUPPLY	SEWER / WASTE	INDUS. / PETROLEUM	TRANSPORTATION	HAZARDOUS WASTE	TELECOM		
551	462	PERRECA ELECTRIC, Newburgh, N.Y.	E	30.6	12.5	75	15	0	0	0	0	0	0	0	0	10
552	532	VIDIMOS INC., East Chicago, Ind.	SH	30.3	30.3	5	50	5	0	0	40	0	0	0	0	
553	**	RADCO ROOFING, Mt. Holly, N.C.	R	30.3	35.6	25	50	0	0	0	25	0	0	0	0	
554	490	WINTER ENVIRONMENTAL, Atlanta, Ga.	A	30.0	40.0	0	0	0	0	0	0	0	100	0	0	
555	515	SELECT PAINT & FINISHES LLC, Salem, N.H.	P	30.0	18.5	60	0	0	0	0	0	40	0	0	0	
556	**	JOHN J. CAMPBELL CO. INC., Memphis, Tenn.	R	29.9	33.9	100	0	0	0	0	0	0	0	0	0	
557	509	ALL-SOUTH SUBCONTRACTORS INC., Birmingham, Ala. ⁵⁵⁷	R	29.9	30.7	100	0	0	0	0	0	0	0	0	0	
558	596	EVANS CONTRACTING GROUP, Charleston, S.C.	C	29.2	46.5	80	10	0	0	5	0	5	0	0	0	
559	527	MAYERS ELECTRIC CO. INC., Cincinnati, Ohio	E	28.9	35.0	35	28	9	0	0	16	7	0	5	0	
560	557	BRODIE CONTRACTORS INC., Raleigh, N.C.	MA	28.6	20.1	100	0	0	0	0	0	0	0	0	0	
561	553	KOWALSKI CONSTRUCTION INC., Phoenix, Ariz. ⁵⁶¹	O	27.8	26.5	92	0	0	0	0	0	0	8	0	0	
562	560	BEACON PIPING CO., Canton, Mass.	M	27.8	23.8	20	5	45	0	0	10	20	0	0	0	
563	574	DEE BROWN INC., Richardson, Texas	MA	27.2	39.7	100	0	0	0	0	0	0	0	0	0	
564	563	TRISCO SYSTEMS INC., Lima, Ohio	MA	26.8	29.8	100	0	0	0	0	0	0	0	0	0	
565	570	DEMOLITION & ASBESTOS REMOVAL INC., Greensboro, N.C.	A	26.2	24.8	0	0	0	0	0	0	0	100	0	0	
566	555	CRAWFORD-TRACEY CORP., Deerfield Beach, Fla.	G	26.0	20.0	100	0	0	0	0	0	0	0	0	0	
567	582	A & B MECHANICAL CONTRACTORS INC., Salt Lake City, Utah	M	25.7	16.6	35	50	0	0	0	0	0	0	0	15	
568	561	STRUCTURAL SYSTEMS REPAIR GROUP, Cincinnati, Ohio ⁵⁶⁸	C/MA/O	25.6	29.3	30	10	10	10	10	10	10	10	0	0	
569	**	BUCKEYE CONSTRUCTION AND RESTORATION, Wellston, Ohio	C/MA	25.4	23.1	80	0	0	0	10	0	10	0	0	0	
570	520	SPECTRA ELECTRICAL SERVICES INC., Tempe, Ariz.	E	25.3	48.5	40	40	0	0	20	0	0	0	0	0	
571	569	HARGROVE ELECTRIC CO. INC., Dallas, Texas	E	24.9	22.6	60	10	0	0	0	15	0	0	0	10	
572	578	IHP INDUSTRIAL INC., St. Joseph, Mo.	M	24.8	23.6	48	0	0	19	12	21	0	0	0	0	
573	573	AAC CONTRACTING, Rochester, NY ⁵⁷³	A	24.1	22.2	90	5	0	0	0	0	0	5	0	0	
574	**	DIMAIO CONCRETE AND CONSTRUCTION LLC, Wilmington, N.C.	C	24.0	30.0	0	0	0	0	0	0	0	0	0	0	
575	**	TALON/LPE LTD., Amarillo, Texas ⁵⁷⁵	A	24.0	24.0	0	0	0	0	1	98	1	0	0	0	
576	583	FC TRAFFIC CONTROL INC., Amarillo, Texas ⁵⁷⁶	O	24.0	36.0	0	0	0	5	0	0	95	0	0	0	
577	551	UNITED RIGGERS AND ERECTORS, Walnut, Calif.	M/ST	23.4	32.8	10	20	10	0	20	40	0	0	0	0	
578	580	SUPERIOR MASONRY UNLIMITED INC., Fort Mill, S.C.	MA	23.2	12.8	100	0	0	0	0	0	0	0	0	0	
579	564	MASONRY BUILDERS INC., Tampa, Fla.	MA	23.0	27.5	96	1	0	0	3	0	0	0	0	0	
580	**	GEORGE'S WELDING SERVICES INC., Miami, Fla.	ST	22.9	43.2	75	0	0	5	0	0	20	0	0	0	
581	579	R & R WINDOW CONTRACTORS INC., Easthampton, Mass.	G	22.7	11.3	100	0	0	0	0	0	0	0	0	0	
582	542	KSC INC., Irving, Texas ⁵⁸²	O	22.6	30.4	100	0	0	0	0	0	0	0	0	0	
583	**	SCHULTZ INDUSTRIES INC., Golden, Colo. ⁵⁸³	O	21.9	16.2	100	0	0	0	0	0	0	0	0	0	
584	572	CONCRETE CUTTING & BREAKING CO., Grand Rapids, Mich. ⁵⁸⁴	O	20.2	20.2	10	15	0	15	5	5	50	0	0	0	
585	590	HARBINGER CONCRETE CONSTRUCTION INC., Wichita, Kan.	C	19.8	19.4	90	10	0	0	0	0	0	0	0	0	
586	584	HARD ROCK CONCRETE CUTTERS INC., Wheeling, Ill. ⁵⁸⁶	O	19.1	19.1	30	5	2	2	3	20	25	3	10	0	
587	**	SAUER STRUCTURAL LLC, Jacksonville, Fla.	P/ST	18.3	4.3	0	10	0	0	0	0	0	0	0	0	
588	529	R. BAKER & SON, Marlboro, N.J.	D	18.0	25.0	10	20	20	0	0	30	10	0	0	10	
589	594	CHG BUILDING SYSTEMS INC., Renton, Wash.	ST	17.8	9.9	90	5	0	0	0	5	0	0	0	0	
590	558	KL&A ENGINEERS & BUILDERS, Golden, Colo.	ST	17.5	57.6	75	10	0	0	0	15	0	0	0	0	
591	**	BOOTH PLUMBING CO. INC., Columbus, Ga.	M	16.6	20.1	100	0	0	0	0	0	0	0	0	0	
592	595	CANDELA CONTROLS INC., Winter Garden, Fla. ⁵⁹²	O	16.6	14.8	80	0	0	0	0	0	10	0	0	0	
593	592	COLBY ENTERPRISES INC., Savannah, Ga.	W	16.1	15.2	100	0	0	0	0	0	0	0	0	0	
594	593	SPEED FAB-CRETE CORP., Kennedale, Texas ⁵⁹⁴	O	15.7	18.3	83	0	0	8	5	0	4	0	0	0	
595	587	STERLING ENVIRONMENTAL CORP., Oakland, Calif.	A	14.7	16.9	20	0	0	0	0	0	0	80	0	0	
596	585	SPRAY SYSTEMS ENVIRONMENTAL, Tempe, Ariz.	A	14.3	16.4	20	5	0	5	0	0	10	60	0	0	
597	**	FW SPECIALTIES (FINN-WALL), Midvale, Utah ⁵⁹⁷	O	14.3	NA	54	10	0	0	0	1	35	0	0	0	
598	600	DD CONSTRUCTION, Centennial, Colo.	O	14.0	15.8	10	0	15	0	0	15	25	0	35	0	
599	599	DESERT MECHANICAL INC., Sylmar, Calif.	M/SH	13.9	2.9	0	0	0	0	0	0	100	0	0	0	
600	598	ALLIED FIRE & SAFETY EQUIPMENT CO. INC., Neptune, N.J.	F	13.5	7.5	99	0	0	0	1	0	0	0	0	0	

FOOTNOTES: ⁵⁵⁷ = LIGHTWEIGHT INSULATING CONCRETE; ⁵⁶¹ = NOT REPORTED; ⁵⁶⁶ = STABILIZATION; ⁵⁷³ = MOLD REMEDIATION; ⁵⁷⁵ = 0; ⁵⁷⁶ = TRAFFIC CONTROL & PAVEMENT MARKINGS; ⁵⁸² = METAL FACADES AND GARAGE SCREENS; ⁵⁸³ = LANDSCAPING; ⁵⁸⁴ = CONCRETE SAWING AND DRILLING SERVICES; ⁵⁸⁶ = LABORERS; ⁵⁹² = LIGHTING CONTROL SYSTEMS; ⁵⁹⁴ = PRECAST CONCRETE; ⁵⁹⁷ = FINISHES (FLOORING); ⁵⁹⁸ = METAL BUILDINGS.

Where to Find the Top 600

FIRM	RANK	FIRM	RANK	FIRM	RANK	FIRM	RANK
#							
11400 LLC	316	Booth Plumbing Co., Inc.	591	Delta Diversified Enterprises Inc.	149	Harder Mechanical	62
1901 Inc.	301	Boudreau Pipeline Corp.	308	Demolition & Asbestos Removal Inc.	565	Hardrock Concrete Placement Co. Inc.	359
5 Points Electrical Company	505	Bouma Corp.	479	Desert Mechanical Inc.	599	Hargrove Electric Co. Inc.	571
A		Brandenburg Industrial Service Co.	175	DiMaio Concrete and Construction LLC	574	Harron Inc.	113
A & B Mechanical Contractors Inc.	567	BrandSafway	6	Donley Cos.	230	Harris	41
A-C Electric Co.	258	Brazos Masonry	420	Dorvin D. Leis Co. Inc.	228	Harrison Contracting	415
AAC Contracting	573	Briggs Electric	276	Douglass Colony Group	328	Hartman Walsh Painting Co.	340
Aaron Enterprises Inc.	418	BrightView Landscape Development Inc.	52	Drill Tech Drilling & Shoring Inc.	150	Hatzel & Buehler Inc.	64
ACCO Engineered Systems	20	Broadway Electric Inc.	169	Dual Temp Co.	507	HB Mechanical Group	90
Ace Electric Inc.	127	Brock	24	Ducci Electrical Contractors Inc.	344	Heggem-Lundquist	526
Ackerman Trade Services	410	Brodie Contractors Inc.	560	Dunn Building Co.	256	Helix Electric	43
ACME Constructors Inc.	343	Browning Chapman LLC	498	E		Hellas	75
Acme Electric Co.	403	Buckeye Construction and Restoration	569	E. Cornell Malone Corp.	474	Helm Group	68
Acousti Engineering Co. of Florida	211	Builders Plus Inc.	390	E.M. Duggan Inc.	168	Hemma Concrete Inc.	429
Acoustic Ceiling and Partition Co.	446	Building Control Integrators	534	Eastern Cos.	194	Hermanson Co.	87
ACS System	298	Buist	274	Edgerton Contractors Inc.	277	Hill Fire Protection LLC	458
Action Electric Co. Inc.	278	Byers Industrial Services	438	Egan Co.	133	Hill Mechanical Corp.	88
Adamo Demolition Co.	465	BZI	119	EIS Holdings LLC	232	Hodess Cleanrooms	121
Adams Electric Co.	176	C		Ellingson Cos.	32	The Holbrook Co. Inc.	461
Advanced Exteriors & Glazing of New England	542	C.A.C. Industries Inc.	178	EMCOR Group Inc.	289	Hoover Construction Co.	516
Advanced Roofing	250	C3M Power Systems	288	Encore Electric	124	Humphrey & Associates Inc.	273
Aggregate Resource Industries Inc.	476	Cache Valley Electric Co.	39	Enerfab Power & Industrial LLC	77	Hunt Electric Corp.	47
Airo Mechanical LLC	319	Candela Controls Inc.	592	Enterprise Properties Inc.	231	Hussung Mechanical Contractors Inc.	253
Ajay Glass Co.	501	Cannon & Wendt Electric Co.	314	EQUANS	23	Hypower	202
Alaka'i Mechanical Corp.	399	Cantera Concrete Co.	426	Equix Inc.	240	I	
Aldridge Electric Inc.	42	Capasso Enterprises Inc.	406	ERMCO Inc.	240	I&I Soft Craft Solutions	139
Alex E. Paris Contracting Co.	365	Capform Inc.	183	ESCO Construction Co.	389	ICI LLC	550
All State Construction Inc.	478	Carl Walker Construction	536	Eutaw Construction Co. Inc.	213	icon Mechanical	159
All-South Subcontractors Inc.	557	CEC Facilities LLC	129	Evans Contracting Group	558	ICS Holding	148
Alliance Partition Systems	523	Ceco Construction Group	53	Everus Construction Group	12	IES Holdings Inc.	11
Allied Fire & Safety Equipment Co. Inc.	600	Centerline Inc.	353	Expense Electrical Co.	255	IHP Industrial Inc.	572
Allison Smith Co.	96	CentiMark Corp.	29	Extreme Steel Inc.	440	IMS Masonry Inc.	336
Alloy	339	Central Ceilings Inc.	434	F		Independence Excavating	109
Alterman Inc.	93	Centuri Holdings Inc.	14	F.L. Crane & Sons Inc.	254	Industrial Constructors/Managers Inc.	442
American Pile and Foundation LLC	355	Century Mechanical Contractors Inc.	436	Faith Technologies Inc.	30	Industrial Power Systems (IPS)	284
American Structural Concrete	233	Cerris Systems	48	FC Traffic Control Inc.	576	Ingllett & Stubbs	101
AMPAM	191	Certified Coatings Co.	535	Felix Construction Co.	225	Innovative Construction Solutions	302
AMPCO Contracting Inc.	376	Certified Interiors Inc.	448	FERGUSON	310	Integrated Facility Services Inc.	321
Amteck LLC	196	Charge	241	Ferguson Trenching Co.	428	International Asbestos Removal Inc.	388
Apex Imaging Services	239	Charter Mechanical	173	Fessler & Bowman Inc.	140	Interstate Mechanical LLC	447
Apex Steel Inc.	512	Cherry Coatings	226	Feyen Zylstra	303	Interstates	97
APG	356	CHG Building Systems Inc.	589	Fisk Electric Co.	147	Irex Contracting Group	172
API Group	3	Cinterra	223	Five Star Electric Corp.	318	ISC Constructors LLC	84
Apollo Sheet Metal Inc.	35	The Circle Group	380	Five-S Group	157	ISEC Inc.	98
Aragon Construction	511	CJ Drilling Inc.	413	Flagger Force	286	ISI Demolition	404
Architectural Fabrication	541	Clark Bros. Inc.	249	Florence Electric & Kaydon Structures Tech.	432	Ivey Mechanical Co.	200
Architectural Glass & Aluminum	309	Clark Foundations LLC	521	Fly & Form Concrete Structures Inc.	402	J	
Architectural Wall Systems LLC	393	Clean Earth	69	Flynn Group of Cos.	34	J&E Companies	331
ArchKey Solutions	26	Cleary Construction Inc.	244	Forthright Environmental Services	518	J. F. Ahern Co.	78
Area Erectors Inc.	385	Cleveland Electric Co.	125	Fountain Construction Co. Inc.	471	J. Ranck Electric	212
Artera Services	19	Colby Enterprises Inc.	593	Fresh Meadow Mechanical Corp	295	J.M. Brennan Inc.	305
Ascendent Demolition	496	Collins Electrical Co. Inc.	205	Frischhertz Electric Co. Inc.	370	Jack B. Henderson Constr. Co. Inc.	166
Ascher Brothers Co. Inc.	396	Comfort Systems USA Inc.	5	Future Fence Co.	548	Jackson Demolition Service Inc.	483
ASRC Industrial	37	Commercial Roofers Inc.	450	FW Specialties (Finn-Wall)	597	Jacobson & Co. Inc.	354
Associated Construction and Engineering Inc.	326	Commonwealth Holdings Inc.	136	G		JD Traditional Industries	529
Associated Mechanical Contractors Inc.	408	ComNet Communications LLC	291	Gaines & Co.	311	Jerry Thompson & Sons	540
Associated Mechanical Contractors Inc.	524	Comprehensive Energy Services Inc.	470	Gaylor Electric	60	JGM Fabricators & Constructors	433
ATI Restoration	71	Concrete Cutting & Breaking Co.	584	GDA Contractors	437	JH Kelly LLC	65
Atkore/Unistrut Construction	180	Concrete Strategies	85	Geo-Solutions Inc.	335	JMEG LLC	107
ATS Drilling Inc.	480	Condon-Johnson & Associates Inc.	171	George's Welding Services Inc.	580	John E. Green Co.	94
Avalotis Corp.	427	Congruex	70	Gibson Landscape	520	John J. Campbell Co. Inc.	556
B		Cooper Steel	80	Go-Tilt Construction	322	John Smith Masonry	547
B & I Contractors Inc.	181	Corrigan Co.	392	Goyette Mechanical Co.	189	Johnson and Jordan Inc.	364
B. T. Mancini Co. Inc.	327	CP Rankin	467	Graydaze Contracting Inc.	333	Johnson-Davis Inc.	451
Baker Construction Enterprises Inc.	15	CR Lighting & Electric Inc.	401	Grazzini Brothers & Co.	482	JRCRUZ Corp.	204
Baker Electric & Renewables	135	Crawford-Tracey Corp.	566	Great Basin Industrial	312	Junior Steel Co.	394
Baker Group	137	Crown Corr Inc.	164	Greater Georgia Concrete LLC	300	K	
Baker Roofing Co.	146	CSE Inc.	525	Greater Metroplex Interiors	220	Kalkreuth Roofing and Sheet Metal	268
Baker Triangle	182	Cullum Mechanical Construction Inc.	424	Greenberry Industrial	217	KC Painting & Coatings	504
Barrin Group	494	Cummings Electrical	132	Greenwood Industries	190	KE Gutridge LLC	398
Barnhart Crane	66	Curtis Partition Corp.	417	Gregory Electric Co. Inc.	454	Keeley Construction Group	74
Barnum & Celillo Electric Inc.	367	D		Greiner Electric	374	Keller North America	18
Basden Steel Corp.	262	D.H. Griffin Infrastructure LLC	251	Gribbins Insulation and Scaffolding	456	Kent Cos.	55
Bauer Foundation Corp.	345	D.H. Griffin Wrecking Co. Inc.	219	Group Builders Inc.	412	Keystone Concrete	54
Bayview Services	372	D.P. Electric Inc.	184	Grundman Mechanical Systems Inc.	509	KHS&S Contractors - EAST	269
Beacon Piping Co.	562	D.W. Nicholson Corp.	544	GSL Electric	348	Kiely Family of Cos.	154
Beaver Excavating Co.	115	Daidone Electric Inc.	452	Guarantee Electrical Co.	120	Kilgore Industries	216
Berg Demo Group	500	Daley's Drywall	320	H		Kimmins Contracting Corp.	441
Bergelectric Corp.	51	Danella	117	H.J. Martin and Son	264	KL&A Engineers & Builders	590
Berkel	131	DANKO Concrete Construction	386	HA Sack Co. LLC	342	Koontz Electric Co. Inc.	407
Bermudez Longo Diaz-Masso LLC	313	DD Construction	598	HACI Mechanical Contractors Inc.	349	Kovach Enclosure System	338
Bierlein Cos. Inc.	360	DECCO Inc.	419	Hampshire Fire Protection Co.	531	Kowalski Construction Inc.	561
BMWC Constructors Inc.	59	Decker Electric Co. Inc.	261	Harbinger Concrete Construction Inc.	585	KSC Inc.	582
Bomel Construction Co. Inc.	142	Dee Brown Inc.	583	Hard Rock Concrete Cutters Inc.	586	L	
BOND Civil & Utility Construction Inc.	106	Dee Cramer	341			Lake Erie Electric Cos.	134
Bonland Industries Inc.	409	Del Monte Electric Co.	517				
		Delaware Elevator Inc.	416				
		Delphi Plumbing & Heating Inc.	545				

FIRM	RANK	FIRM	RANK	FIRM	RANK	FIRM	RANK
Landmark Construction Co.	138	Mid-Continental Restoration Co. Inc.	493	Nickle Electrical Cos.	472	Petillo Cos.	203
Largo Concrete	49	Midstate Mechanical LLC	435	North American Dismantling Corp.	464	Phillips Brothers Electrical Contractors Inc.	379
Leed Electric Inc.	439	Midwest Drywall Co. Inc.	275	Northland Concrete & Masonry Co. LLC	246	Pike Corp.	10
LEGENCE	33	Miller Electric Co.	177	Northstar Group Services Inc.	50	Pillar Construction Inc.	430
Letsons Co.	245	Miller Electric Co.	61	Nox Group	103	Pioneer Cladding & Glazing Systems	378
Lexicon Inc.	40	Miller Insulation Co. Inc.	307	O		The PIPCO Cos. Ltd.	522
Limbach Facility Services	89	Miller Sierra Contractors	195	O'Connell Electric Co. Inc.	155	Pipe Strong	506
Lithko Contracting	25	MillerClapperton	41	O'Hara's Son Roofing Co. (OSR)	260	Pittsburg Tank & Tower Group Inc.	315
Loenbro	99	MJ Mechanical	475	O'Rourke Wrecking Co.	468	Plateau Excavation Inc.	76
M		MMR Group	16	Ohio Valley Electrical Services Inc.	510	Power Design	31
M.C. Dean	22	Morris-Shea Bridge Co. Inc.	229	Oil Capital Electric	293	Poynter	141
M.G. McGrath Inc.	362	The Morse Group Inc.	143	Oklahoma Electrical Supply Co. (OESCO)	283	Precision Concrete Construction Inc.	192
MacDonald-Miller Facility Solutions	83	Moss Utilities	263	Olsson Industrial Electric	259	Precision Environmental Co.	473
Malcolm Drilling Co. Inc.	57	Motor City Electric Co.	38	Opline Enterprises	324	Precision Walls Inc.	118
Manafort Brothers Inc.	116	MSL Electric Inc.	499	Orion Concrete	179	Premium Concrete, Inc.	543
Marathon Electrical Contractors	215	MSS Solutions	162	Otto Baum Co. Inc.	363	Prime Controls	92
Marr Scaffolding Co.	528	MTech Mechanical	218	Owen Steel Company Inc.	366	Primoris Services Corp.	4
Martell Services Group Inc.	361	Mullins Mechanical & Welding LLC	214	P		Primus Builders Inc. Panel Division	503
Martin Concrete Construction	174	Murphy Co.	79	PI Construction LLC	114	Prism Electric	128
Martin Petersen Co. Inc.	325	Murray Co.	91	Pacific Rim Mechanical	188	Pro-Craft Construction Inc.	469
Mason Construction LLC	334	Muth Electric Inc.	234	Pacific Steel Group	95	PSI Pacific Systems Interior	530
masonry builders inc	579	MYR Group Inc.	8	Pacific Structures Inc.	206	PTE Systems Intl. LLC	477
Massey's Plate Glass & Aluminum Inc	304	N		PARC Environmental	508	Q	
Mayers Electric Co. Inc.	559	Nashville Machine Co. Inc.	287	Pan-Pacific Mechanical LLC	111	Quanta Services	1
McAlvain Concrete Inc.	421	National Coatings Inc.	514	PARC Environmental	508	QuestMark, a Division of CentiMark Corp.	279
McClure Co.	153	National Construction Enterprises Inc.	144	Paul Johnson Drywall	186	R	
McKamish Inc.	299	National Enclosure Co.	533	Paulson-Cheek Mechanical	257	R & R Window Contractors Inc.	581
McKee Utility Contractors LLC	236	National Steel City LLC	489	PayneCrest Electric	197	R. Baker & Son	588
McKenney's Inc.	67	NEAD Electric	294	PDM Constructors Inc.	329	R. W. Warner Inc.	384
McKinstry	36	Nevell Group Inc.	130	Pence/Kelly Concrete LLC	395	Rachel Contracting	252
MEI Industrial Solutions	100	New England Finish Systems	290	Penhall Co.	201	Radco Roofing	553
Meisner Electric Inc.	414	New Hudson Facades	185	Penington Painting Co.	532	The Raymond Group	210
Menard	156	New River Electrical Corp.	56	Performance Contracting Group Inc.	9	Recreational Design & Construction	495
Mersino Water Solutions	271	Newkirk Electric Associates Inc.	221	Perreca Electric	551	Red Cedar Steel	272
MH Civil Constructors Inc.	519	The Newtron Group	45	Persons Services Corp	235		
Mid-City Electric Co.	282	Nickell Company LLC	537				



BRIDGING AMERICA'S COMMUNITIES

THAT'S THOMAS PRIDE.

Thomas Industrial Coatings, Inc. is a multi-certified industrial painting and coatings contractor dedicated to quality, safety, and efficiency. We take great pride in our work, and it shows on every job we do across the country.



thomasindcoatings.com (636)475-3500

For career opportunities please visit thomasindcoatings.com/careers

Where to Find the Top 600

FIRM	RANK	FIRM	RANK	FIRM	RANK	FIRM	RANK
Reflection Window + Wall	238	Shelley Electric Inc.	488	Tecta America	28	W. B. Guimarin & Co. Inc.	502
Reidy Contracting Group	347	Sierra Pacific West Inc.	382	Telligent Masonry LLC	449	W. D. Manor Mechanical Contractors Inc.	383
Reliance Interiors	546	Skoda Contracting	381	Terra Millennium Corp.	58	W. L. French Excavating Corp.	243
Rembo Geotechnical Contractors Inc.	497	SOEP Painting Corp.	539	Texas Scenic Co.	491	W.A. Basic Construction Co. Inc.	198
RHP Mechanical Systems	371	South Valley	515	Thomas Industrial Coatings Inc.	459	W.G. Tomko	261
Richard Goettle Inc.	163	Southern Air	237	Thompson Solutions Group	265	Wallworks	549
Right Way Plumbing & Mechanical LLC	462	Southland Industries	13	Thorne Associates Inc.	306	Ward Electric Co. Inc.	270
RK Industries LLC	108	Sowles Co.	425	TJ Wies Contracting Inc.	266	Wayne Brothers Cos.	189
RKS Plumbing and Mechanical Inc.	481	SPC Mechanical	161	TL Diversified	368	Wayne J. Griffin Electric Inc.	73
Rock Solid Stabilization and Reclamation	377	Spectra Electrical Services Inc.	570	Tri-City Electrical Contractors Inc.	165	Wayne's Roofing Inc.	492
The Rockwell Group Inc.	527	Speed Fab-Crete Corp.	594	Tri-City Group	81	WDF	246
Rogers Building Solutions	712	Spiritas Wrecking Co.	490	The Tri-M Group	296	Weifield Group Contracting	207
Rogers Electric	104	Spray Systems Environmental	596	Trisco Systems Inc.	564	West Valley Construction	152
Roofed Right America	422	SPS Corp.	445	TSI Corps.	538	Western Allied Corp.	369
Rosendin Electric	7	Standard Drywall Inc.	151	Tweet Garot Mechanical	208	Western Partitions Inc.	110
Rotolo Consultants Inc. (RCI)	443	Stark Excavating Inc.	280	U		Western Specialty Contractors	158
Royal Electric Co.	242	The State Group	27	U.S. Engineering Holdings	86	Whitaker Ellis Builders Inc.	455
R.T. Moore Co. Inc.	167	SteelFab Inc.	17	United Chester Industries Inc. DBA United Mechanical	457	White Electrical Construction Co.	352
Ruston Paving Co. Inc.	400	Sterling Environmental Corp.	595	United Forming Inc.	337	Wiegman Associates	397
Ruttura & Sons Construction Co. Inc.	332	Sterling Infrastructure Inc.	21	United Grading and Excavating	405	The Williams Group	285
Ryan Inc. Central	160	Stonebridge Inc.	358	United Riggers and Erectors	577	Wynier Electric	187
S		Strack Inc.	193	United Services Group	485	Winter Environmental	554
S&F Concrete Contractors Corp	209	Structural Group	46	Universal Builders Supply	466	The Wtmer Group	513
Sargent Electric Co.	102	Structural Systems Repair Group	568	V		Wm. A. J. Shaeffer's Sons Inc.	484
Sauer Mechanical LLC	486	Sun Valley Masonry Inc.	323	Valdez Painting Inc.	453	Wolverine Fire Protection Co.	444
Sauer Structural LLC	587	Sunland Asphalt & Construction LLC	123	Valiant Energy Service	578	Worth and Co. Inc.	267
Schlouch Inc.	357	Suntec Concrete Inc.	44	Valley Electric	122	Wyatt Inc.	351
Schuff Steel Co., a DBM Global Co.	63	Sunwest Electric Inc.	460	Van Ert Electric Co. Inc.	122	X	
Schultz Industries Inc.	583	Superior Masonry Unlimited Inc.	375	Vaughn Industries LLC	170	Y	
Schwager Davis Inc.	487	Superior Rigging & Erecting Co.	105	Veit & Co. Inc.	126	Xcel Mechanical Systems Inc.	391
SDB Inc.	247	Sure Steel Inc.	463	Ventana	350	YTG LLC	82
Select Demo Services LLC	297	Swanson & Youngdale	463	Vidimos Inc.	562		
Select Paint & Finishes LLC	555	The Systems Group	227	Vollers Excavating and Construction Co.	330		
Sentinel Safety & Security Group LLC	317	T		W			
Saretta Construction Inc.	346	Talon/LPE Ltd.	575	W&W Glass	224		
Shaw & Sons Inc.	431	TAP Electrical Contracting Service	423				
Shaw Electric Co.	292	Taylor Electric Inc.	373				
		TDIndustries	72				

PS Form 3526 Statement of Ownership, Management, and Circulation (All Periodicals Publications Except Requester Publications)

1. Publication Title BNP MEDIA II, LLC/ENR (ENGINEERING NEWS RECORD)	2. Publication Number 834380	ISSN 08919526	3. Filing Date 09/29/2025
4. Issue Frequency 2 TIMES PER MONTH, EXCEPT 1 TIME IN JAN. AND	5. Number of Issues Published Annually 24	6. Annual Subscription Price \$ 149.99	
7. Complete Mailing Address of Known Office of Publication 550 W MERRILL ST STE 200 BIRMINGHAM, OKLAHOMA, MI 48009-1443			Contact Person CATHERINE RONAN Telephone (248) 244-8259
8. Complete Mailing Address of Headquarters or General Business Office of Publisher 550 W MERRILL ST STE 200 BIRMINGHAM, MI 48009			
9. Full Names and Complete Mailing Addresses of Publisher, Editor, and Managing Editor			
Publisher (Name and complete mailing address) SCOTT J SELTZ 350 5TH AVENUE SUITE 600 NEW YORK, NY 10118-0110			
Editor (Name and complete mailing address) SCOTT D BLAIR 350 5TH AVENUE SUITE 600 NEW YORK, NY 10118-0110			
Managing Editor (Name and complete mailing address) SCOTT JUDY 350 5TH AVENUE SUITE 600 NEW YORK, NY 10118-0110			
10. Owner (Do not leave blank. If the publication is owned by a corporation, give the name and address of the corporation immediately followed by the names and addresses of all stockholders owning or holding 1 percent or more of the total amount of stock. If not owned by a corporation, give names and addresses of the individual owners. If owned by a partnership or other unincorporated firm, give its name and address as well as those of each individual owner. If the publication is published by a nonprofit organization, give its name and address.)			
Full Name	Complete Mailing Address		
BNP MEDIA II, INC.	550 W MERRILL ST STE 200, BIRMINGHAM, MI 48009		
TAGGART E. HENDERSON	550 W MERRILL ST STE 200, BIRMINGHAM, MI 48009		
HARPER T HENDERSON	550 W MERRILL ST STE 200, BIRMINGHAM, MI 48009		
MITCHELL L HENDERSON	550 W MERRILL ST STE 200, BIRMINGHAM, MI 48009		
11. Known Bondholders, Mortgagees, and Other Security Holders Owning or Holding 1 Percent or More of Total Amount of Bonds, Mortgages, or Other Securities. If none, check box <input checked="" type="checkbox"/> None			
Full Name	Complete Mailing Address		

PS Form 3526, September 2007 (Page 1)

PRIVACY NOTICE: See our privacy policy on www.usps.com

13. Publication Title BNP MEDIA II, LLC/ENR (ENGINEERING NEWS RECORD)	14. Issue Date for Circulation Data Below 08/25/2025	
15. Extend and Nature of Circulation	Average No. Copies Each Issue During Preceding 12 Months	No. Copies of Single Issue Published Nearest to Filing Date
a. Total Numbers of Copies (Net press run)	12972	13507
b. Paid Circulation (By Mail and Outside the Mail)		
(1) Mailed Outside County Paid Subscriptions Stated on PS Form 3541 (Include paid distribution above nominal rate, advertiser's proof copies, and exchange copies)	9719	9734
(2) Mailed In-County Paid Subscriptions Stated on PS Form 3541 (Include paid distribution above nominal rate, advertiser's proof copies, and exchange copies)	0	0
(3) Paid Distribution Outside the Mails Including Sales Through Dealers and Carriers, Street Vendors, Counter Sales, and Other Paid Distribution Outside USPS	229	222
(4) Paid Distribution by Other Classes of Mail Through the USPS (e.g. First-Class Mail)	0	0
c. Total Paid Distribution (Sum of 15b (1), (2), (3), (4))	9948	9956
d. Free or Nominal Rate Distribution (By Mail and Outside the Mail)		
(1) Free or Nominal Rate Outside County Copies included on PS Form 3541	2184	2241
(2) Free or Nominal Rate In-County Copies included on PS Form 3541	0	0
(3) Free or Nominal Rate Copies Mailed at Other Classes Through the USPS (e.g. First-Class Mail)	90	148
(4) Free or Nominal Rate Distribution Outside the Mail (Carriers or other means)	144	69
e. Total Free or Nominal Rate Distribution (Sum of 15d (1), (2), (3), (4))	2418	2458
f. Total Distribution (Sum of 15c and 15e)	12366	12414
g. Copies not Distributed	606	1093
h. Total (Sum of 15f and 15g)	12972	13507
1. Percent Paid (15c / 15f times 100)	80.45 %	80.20 %
16. If total circulation includes electronic copies, report that circulation on lines below.		
a. Paid Electronic Copies	0	0
b. Total Paid Print Copies (Line 15c) + Paid Electronic Copies	0	0
c. Total Print Distribution (Line 15f) + Paid Electronic Copies	0.00 %	0.00 %
d. Percent Paid (Both Print and Electronic Copies)	0.00 %	0.00 %
<input type="checkbox"/> I certify that 50% of all my distributed copies (Electronic and Print) are paid above a nominal price.		
17. Publication of Statement of Ownership		
<input checked="" type="checkbox"/> If the publication is a general publication, publication of this statement is required. Will be printed <input type="checkbox"/> Publication not required. in the 10/27/2025 issue of this publication.		
18. Signature and Title of Editor, Publisher, Business Manager, or Owner	Title	Date
Catherine M. Ronan	Data Quality Manager	09/29/2025 17:46:21 PM
I certify that all information furnished on this form is true and complete. I understand that anyone who furnishes false or misleading information on this form or who omits material or information requested on the form may be subject to criminal sanctions (including fines and imprisonment) and/or civil sanctions (including civil penalties).		

PS Form 3526, September 2007 (Page 2)

PRIVACY NOTICE: See our privacy policy on www.usps.com