

# 2021 - 2022

RSPCA AUSTRALIA  
**Annual Report**



For their support throughout the 2021–2022 financial year, RSPCA Australia would like to thank:

National Nutritional Partner



National Pet Health Partner



National Adoption Partner



Major National Partners



# TABLE OF CONTENTS

MESSAGE FROM THE CEO .....	6
MESSAGE FROM THE CHAIR.....	8
OUR BOARD .....	10
STRATEGIC PLAN.....	11
WHAT WE DO.....	12
SHARING SCIENCE & KNOWLEDGE.....	14
ADVOCACY & CAMPAIGNS .....	18
EDUCATION, COLLABORATION & ENGAGEMENT .....	22
RSPCA APPROVED FARMING SCHEME .....	26
SUPPORTING THE FEDERATION .....	30
FINANCIALS .....	34



# MESSAGE FROM THE CEO



On behalf of RSPCA Australia, welcome to our annual report for 2021-22.

The RSPCA is a federation of eight state and territory RSPCAs working alongside the national body, RSPCA Australia. Together the RSPCA federation runs animal shelters, investigates and prosecutes animal cruelty complaints, and advocates on animal welfare issues to government and industry – both directly and, when necessary, mobilising our supporters to take action. We recognise that to improve animals' lives as much as possible, we have to use a variety of strategies, from education and prevention, to support and assistance, to treatment, rescue and enforcement.

**This annual report highlights the work of RSPCA Australia, the small team at the federation's national body, but as part of this, we're also pleased to share the work of our state and territory RSPCAs – as we all work together to fulfil our strategic purpose, which is to make animals' lives better.**

This document – the second annual report that RSPCA Australia has produced – rightly begins by highlighting the science and knowledge that underpins all our work, and which is such a crucial aspect of our organisation and operations. This is the foundation of our policies, positions, practices, programs – and guides the way in which we work together with our partners, including the wider RSPCA federation.

This year, our science and policy work included continuing to build/grow and update the RSPCA Knowledgebase, the leading free and trusted source of animal welfare science that has been created and maintained by RSPCA Australia. This year, the RSPCA Knowledgebase received nearly 5.5 million views and now contains over 670 articles on an incredibly diverse range of topics. We also continued to award scholarships to students interested in animal welfare and produce our quarterly Science Update, which now reaches over 2,000 people.

And crucially, being a science-led organisation also means our priorities and activities are guided by what the science and evidence (as well as community values and expectations) tell us are the biggest animal welfare issues. A key example this year is the

impact of climate change. Whether it's extreme weather events, prolonged droughts, fires or floods, there's no question that climate change affects countless animals – not just wildlife, but also companion animals and farm animals. That's why this year, we hosted the 2022 Animal Welfare Seminar on the topic, 'Animal welfare in a changing climate'. Leading experts in climate change and animal welfare came together in a specialised two-day event that had over 900 registrations, to not just raise awareness of these issues, but also learn from each other about how we can mitigate these impacts and build our collective resilience.

While most people know the RSPCA for our work running animal shelters and investigating animal cruelty complaints, RSPCA Australia and state and territory RSPCAs also all play an important role in education and prevention, especially advocating for improved animal welfare practices and laws that better protect animals. This year I'm pleased to say there's been substantial progress on two issues on which the RSPCA federation has advocated for decades.

The first is live sheep export – a cruel and unsustainable trade that the community does not support. This year we saw the election of a new Federal Government who had taken to the

election a policy of phasing out live sheep export. This is a positive and significant step in itself – although our focus now will be on ensuring an end date is legislated this term of Parliament. We also advocated for both the previous and current Federal Governments to abandon plans to shorten the prohibition period for live sheep exports during the hot northern summer. This is a small but hard-won protection that avoids hundreds of thousands of sheep being exposed to unacceptable risks of heat stress, which is why we and the community fought so hard to keep the prohibition this year.

The second is a phase out of barren battery cages for layer hens. This year, as the incredibly lengthy and prolonged Standards and Guidelines process finally came to an end, the RSPCA federation stepped up our advocacy to state and territory governments to ensure a phase out of these cages – which currently house over 5 million of Australia's hens – was included in the final Standards. As I write this, the final Standards and Guidelines for poultry have recently been released, and we're pleased to say that a phase out date has been included.

**It's heartening to see such substantial progress this year on these two issues, in a way that not just improves animal welfare but also better reflects community expectations.**

This year, the RSPCA Approved Farming Scheme continues to improve the lives of millions of farm animals with a logo that consumers know and trust. With 3 in 5 Australians now looking for the RSPCA Approved logo, we know that it's more important than ever to provide a robust certification program that shows consumers that eggs, meat or fish has come from a farm with a focus on animal welfare. This year, the Scheme meant that 609 million animals benefitted from higher welfare conditions, across 539 farms, with 38 Licensees sourcing products from 14 Producers. And of course, the RSPCA Certification Body, which sits within the Scheme, and conducted over 1,100 assessments at farms and abattoirs throughout the year – without whom the animal welfare benefits from the Scheme would not be realised.

Some of the most valuable and impactful work we do at RSPCA Australia is to support the wider RSPCA federation through coordinating national partnerships. This year, this included bringing Royal Canin on board as our new Official National Nutritional Partner, a partnership which has already had substantial benefits to the entire RSPCA federation. Our team also continued to work closely with national partners Elanco, our National Pet Health Partner, who supply and deliver parasiticides for dogs and cats across our shelters; Petbarn, who for 10 years now have been helping thousands of RSPCA animals find homes through their stores; and our many other valued corporate partners. And we're especially grateful for our more than 110 Workplace Giving partners – dedicated workplaces and their employees who are making a real

difference to animals' lives through regular donations.

In December 2021, we said farewell to Dr Bidda Jones AM, who stepped down from her role as Chief Science and Strategy Officer after a stellar career spanning 25 years with the RSPCA in Australia. On behalf of the RSPCA, we say thank you to Bidda for her leadership and contribution to the RSPCA and to animal welfare more broadly. We're delighted to have welcomed Dr Suzie Fowler to the team in February 2022 as Chief Science Officer. Suzie is a strategic leader in animal welfare who most recently worked as Senior University Veterinarian at the Australian National University and as the ANU's Head of Animal Services for nine years. As leader of our Science and Policy team, Suzie has already been playing a key role in our work to improve the lives of animals by using animal welfare science to inform policies, positions and campaigns.

I know our team is very excited about, and very supportive of, our refreshed strategic direction and what this means for our work. I hope this report provides you with some interesting and useful examples of how the RSPCA federation has continued to work hard together this year to make animals' lives better.

**Rich Mussell**  
Chief Executive Officer

# MESSAGE FROM THE CHAIR



In my foreword to last year's Annual Report, I highlighted some of the significant achievements that the RSPCA federation had helped achieve over the period of our previous Strategic Plan (2016-2020).

Now, having begun implementing our 2022-2024 Strategic Plan, it's heartening to see that significant progress continuing across a number of animal welfare issues. I look forward to seeing what RSPCA Australia and its state and territory member Societies can achieve together for animals over this period, whether it's companion animals, farm animals, animals in sport and entertainment, animals in research, or wildlife.

Our new Strategic Plan is outlined in full in this report. But at its heart, it's about our recently refreshed and clarified strategic purpose: to make animals' lives better.

**This is a simple objective but one that's at the heart of everything we do at RSPCA Australia – whether it's supporting the RSPCA federation through national procurement activity, saving money that can be spent directly on animal care; or advocating in collaboration with state and territory RSPCA member societies for laws that will protect millions of animals.**

As the consultation and feedback that went into the development of this plan pointed out, in addition to addressing the animal welfare issues, the new plan needed a great focus on investing and strengthening the RSPCA as an

organisation – such as supporting our people, improving and streamlining systems and processes, and reinforcing our brand. This will position us to tackle these difficult and complex animal welfare issues and be able to do the best job possible.

In 2021-22, I'd like to take this opportunity to highlight the important work that the RSPCA Australia Board has done to lead the organisation and support the CEO and team to deliver against this new Strategic Plan. This has included examining our internal structures to ensure the federation is working together as effectively as possible, which among other things has led to the establishment of a new Animal Welfare and Ethics Committee (AWEC). The AWEC will make recommendations to the Board on matters including emerging animal welfare issues and animal welfare

policy, positions, priorities and advocacy strategies.

The Board also continued to provide strategic oversight of the RSPCA Australia team's important work across science, advocacy, communications, partnerships, procurement and the RSPCA Approved Farming Scheme. Working closely with our member Societies, this year we've seen landmark progress on key longstanding advocacy issues such as live sheep export and battery cages for layer hens; a new national pet food partnership with Royal Canin, and a strengthening of existing partnerships; and significant growth of the RSPCA Approved Farming Scheme.

I would particularly like to acknowledge the ongoing work that both the Board and RSPCA Australia staff have done this year to strengthen the RSPCA Approved Farming Scheme.

It takes a passionate and dedicated team to keep delivering on all of these priorities, including through the challenging times we've experienced over the last three years. From our

volunteer Board Directors to RSPCA staff and volunteers across the country, we all play an important role in improving animals' lives.

With a very small portion of operating expenses nationally coming from government, the RSPCA relies on the support of the community through donations, bequests and volunteering. We also know that the RSPCA relies on having the trust of the community as a leading animal welfare organisation, which is why this year we were delighted to again be honoured as Highly Commended among Readers' Digest's most Trusted Brands in 2022.

As Chair of the RSPCA Australia Board, I would also like to take this opportunity to thank and acknowledge those Directors who are leaving our Board, some after many years. In particular, thank you to Eileen Thumpkin, who stepped down from the Board after more than 15 years' service. Eileen's commitment and passion for animal welfare, including as a director of RSPCA Queensland for many years, will be sorely missed.

This year, we were also deeply saddened by the passing of board member Jill Bottrall, who passed away in April. Jill joined the board of RSPCA South Australia and of RSPCA Australia in 2014. Her passion for animal welfare, commitment to improving the lives of animals, and expertise and command of working with government and the media made Jill an asset to the RSPCA.

Our organisation continues to evolve, as it must. It's reassuring to look back on the past year and to see how much has been achieved, particularly when progress often seems so slow when it comes to animal welfare. However, we are eternally mindful that there is so much more to do to make animals' lives better, and the Board and I look forward to continuing to work with the RSPCA Australia team and the federation to support this important work.

**Dr Richard Russell**

Chair

# OUR BOARD

The RSPCA in Australia is a federation, with eight autonomous state and territory RSPCAs who are members of the federal body, RSPCA Australia. Each of these nine entities is governed by a board. The Board of RSPCA Australia comprises one nominated director from each of the eight member Societies, plus three independent recruited directors.

Board as of 30 June 2022:



**Dr Richard Russell**

Independent Chair



**Mr Bernie Delaney**

Nominated Director



**Mr Rob DiMonte**

(part year) Nominated Director



**Ms Alexandra Garrott**

Nominated Director



**Ms Deborah Hambleton**

Independent Director



**Ms Jo McKennarley**

(part year) Nominated Director



**Mr Danny Moore**

Nominated Director



**Mr Darren Smith**

Nominated Director



**Mr Mark Steele**

(part year) Nominated Director



**Ms Alexandra Wedutenko**

Nominated Director

**Part year directors:**

**Ms Jill Bottrall**  
(part year)  
Nominated Director

**Mr Peter O’Callaghan**  
(part year)  
Nominated Director

**Mr Ian Thompson**  
(part year)  
Independent Director

**Ms Eileen Thumpkin**  
(part year)  
Nominated Director

*We say thank you to Eileen Thumpkin, who stepped down from the Board after more than 15 years’ service. Eileen’s commitment and passion for animal welfare, including as a director of RSPCA Queensland for many years, will be sorely missed.*

*This year, we were deeply saddened by the passing of board member Jill Bottrall, who passed away in April. Jill joined the board of RSPCA South Australia and of RSPCA Australia in 2014. Her passion for animal welfare, commitment to improving the lives of animals, and expertise and command of working with government and the media made Jill an asset to the RSPCA. On behalf of the RSPCA, we send our sincere condolences to Jill’s family and friends.*

# STRATEGIC PLAN 2022-24

**STRATEGIC PURPOSE: TO MAKE ANIMALS’ LIVES BETTER**

## 1 LEADING ANIMAL WELFARE THINKING

**AMBITIONS**

- We search out and provide the best evidence for creating and informing policies, standards and law
- We share knowledge and inform society on what is good animal welfare
- We integrate animal welfare into big picture ideas

**OUTCOMES & MEASURES**

- 1.1** Demonstrated leadership on animal welfare policy issues
- 1.2** Increased societal awareness of good animal welfare
- 1.3** Interconnections between animal welfare, human wellbeing and their physical and social environment is recognised in policy
- 1.4** Updating the evidence base for RSPCA Approved Farming Scheme standards

## 3 INCREASING OUR EFFECTIVENESS

**AMBITIONS**

- We focus our work on the priority animal welfare issues in Australia
- We maximise the efficiency of our operations
- We collaborate with our member Societies and support each other

**OUTCOMES & MEASURES**

- 3.1** Deeper engagement on priority issues
- 3.2** Simplifying processes to achieve efficient and effective federation outcomes
- 3.3** Demonstrated member Societies engagement on national projects
- 3.4** Enhanced RSPCA Approved Farming Scheme systems and processes

## 2 ADVOCATING FOR ANIMALS

**AMBITIONS**

- We advocate for positive changes in attitudes, behaviours, practices and laws
- We create and leverage opportunities and work with others to maximise impact

**OUTCOMES & MEASURES**

- 2.1** Changes in society which make animals’ lives better
- 2.2** Improved support and engagement in advocacy programs
- 2.3** Increased quality of life for farm animals under the RSPCA Approved Farming Scheme

## 4 ENSURING OUR SUSTAINABILITY

**AMBITIONS**

- We position RSPCA Australia for future relevance and success
- We support, develop and inspire our people
- We have an open, inclusive and compassionate culture
- We have a viable funding base that provides the resources we need

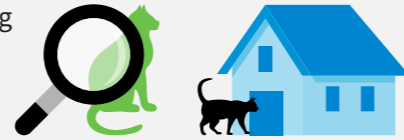
**OUTCOMES & MEASURES**

- 4.1** Improved recognition and trust in the RSPCA brand
- 4.2** Increase in staff wellbeing and engagement
- 4.3** Growth in value of national partnerships and marketing
- 4.4** Improved trust in the RSPCA Approved brand

# WHAT WE DO

The RSPCA federation works collaboratively to make animals' lives better.

The RSPCA's member Societies in each state and territory run animal rehoming shelters, investigate and prosecute animal cruelty complaints, educate the community on animal welfare and responsible pet ownership, and advocate for changes in policy and practice that improve the welfare of animals.



At RSPCA Australia, we work alongside member Societies by:

Providing science-based animal welfare knowledge, including the RSPCA Knowledgebase, quarterly Science Update and annual Animal Welfare Seminar



Developing and providing valuable advice for businesses and consumers about higher welfare food and consumer expectations



Advocating for the welfare of animals across a range of sectors, environments and issues, including companion animals, farm animals, animals in sport and entertainment, animals in research and teaching, and wild animals



Providing advice and working with industry and governments to improve animal welfare standards and industry practice



Acting on animal welfare issues the community cares about and raising awareness of animal welfare issues, mobilising our supporters to advocate to governments and industries to prioritise and improve animal welfare



Supporting the wider RSPCA federation in their important work caring for and protecting animals, including coordinating national events and initiatives



Operating the RSPCA Approved Farming Scheme, improving the lives of millions of farm animals by implementing detailed higher welfare standards and a rigorous certification process which includes on-site assessments



*for all creatures,  
great and small...*

# SHARING SCIENCE & KNOWLEDGE

The RSPCA is a science- and evidence-based organisation, and all of our work is guided by scientific principles and research or teaching. This means using peer-reviewed scientific research to inform our policies, positions and campaigns, as well as our advocacy to industry and government.

Whether it's the animals we live with as companion animals or encounter in the wild, farm for food or fibre, or animals in sport, entertainment, reaching or teaching - a science-based approach is crucial to ensuring that we can fulfill our strategic purpose of making animals' lives better.



## THE RSPCA KNOWLEDGEBASE

In 2021-22, we continued to maintain and update the RSPCA Knowledgebase, a trusted source of animal welfare science, advice and information. **This year we added 21 new articles and updated 122 more.** Topics relating to companion animals and their care remained the most popular although we also received strong readership of articles related to farm animals, animals in research, animals in sport and entertainment, and wildlife. As we look to the future, we are considering ways to enhance the Knowledgebase with new content and updated articles so we can help keep the community informed.

If you have any feedback or if there are any topics you'd like to see covered, get in touch via [rspca@rspca.org.au](mailto:rspca@rspca.org.au) with your feedback.

**5,447,812**

**KNOWLEDGEBASE VIEWS THIS YEAR**

**678**

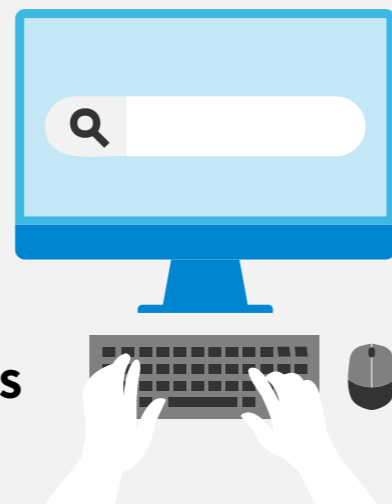
**KNOWLEDGEBASE ARTICLES TOTAL**

**21**

**NEW ARTICLES THIS YEAR**

**122**

**UPDATED ARTICLES THIS YEAR**



## THE TOP FIVE ARTICLES VOTED 'MOST HELPFUL' THIS YEAR:

1 How do I take care of tadpoles?

2 How should I keep and care for my goldfish?

3 What should I feed my guinea pigs?

4 What is the most humane way to euthanase aquarium fish?

5 I think my guinea pig might be pregnant, what should I do?

## THE TOP FIVE MOST VIEWED ARTICLES THIS YEAR:

1 My cat is being aggressive towards my other cat, what should I do?

2 My cat is being aggressive towards me, what should I do?

3 What should I feed my guinea pigs?

4 What should I feed my puppy?

5 How should I introduce my new dog or puppy to the family cat?

## JUST SOME OF THE NEW ARTICLES PUBLISHED:

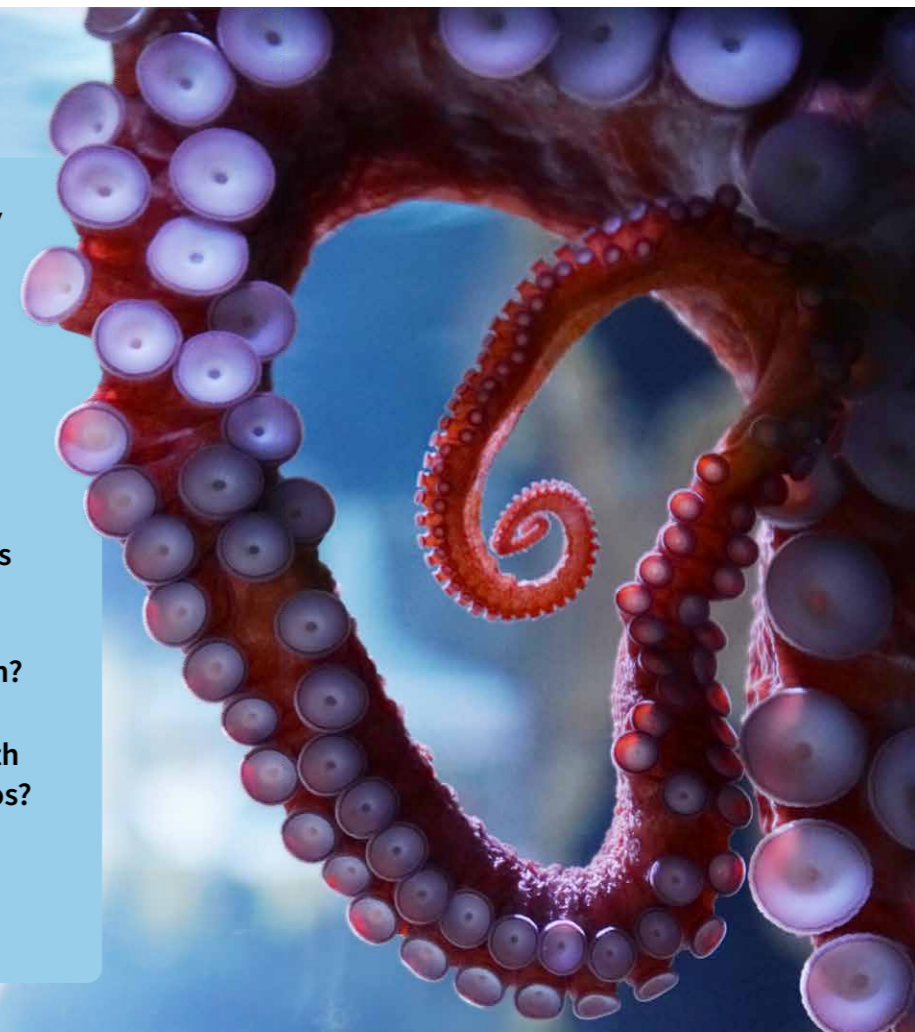
1 What are some of the painful procedures experienced by sheep on farm?

2 What are some of the painful procedures experienced by pigs on farm?

3 Do octopi and lobsters feel pain?

4 What are the welfare issues with managing peri-urban kangaroos?

5 What are the welfare issues with animals used in research?



## RSPCA POLICIES & POSITION PAPERS

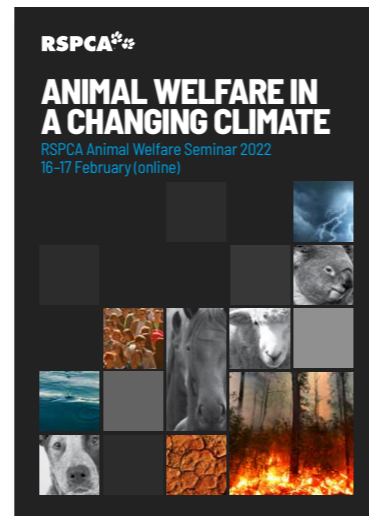
In 2021-22, the RSPCA reviewed a number of its policies and position papers. These documents are reviewed by the Science and Policy team and consultation occurs with all RSPCA member Societies to ensure consistent support for the final statements. This year, the review of the following policies and position papers were completed:

- Policy D9 – Research Animals
- Position Paper PP B6 – Welfare of farm animals at saleyards
- Position Paper PP B4 – Painful farm animal husbandry procedures.

## 2022 ANIMAL WELFARE SEMINAR – ANIMAL WELFARE IN A CHANGING CLIMATE

In February 2022, we hosted our annual Animal Welfare Seminar, with a focus on climate change and animal welfare. This was the second time RSPCA Australia has held this Seminar online – a format borne out of necessity during the COVID-19 pandemic but is now a way of delivering Seminar content to make it more accessible and attract a wider range of speakers and attendees.

This year's Seminar brought together leading experts in animal welfare and climate change over two days of informative and insightful sessions on topics including: the devastating effects of climate-induced events, approaches to managing animals in disasters, and adaptations and actions required to help address climate change and build resilience in our natural world and the animals in our care.



The Seminar saw 917 people register for the two-day event, with positive feedback and some lively discussion on this topic which is becoming more and more central to the RSPCA's work as climate change increasingly threatens the welfare of not just wildlife, but all of the animals in our lives.

## RSPCA SCIENCE UPDATE

Every quarter, RSPCA Australia's Science and Policy team produces the Animal Welfare Science Update. The Animal Welfare Science Update provides summaries of the most relevant and interesting scientific papers and reports on animal welfare published in the previous few months. Our Animal Welfare Science Update has around 2,250 subscribers, both nationally and overseas, who are largely made up of industry, government, research, NGO and members of the public interested in all manner of animal welfare issues.

Just some of the topics covered in this year's Science Updates:

- Factors influencing the risk of animal surrender to shelters
- Negative affective states in commercially reared chicks
- Pain relief options for sheep
- Welfare issues associated with reptiles in captivity
- Welfare issues with flat-faced cats
- Non-animal models for research
- Animal welfare concerns for pet rats
- Environmental enrichment for fish in aquaculture
- People's understanding of welfare issues in brachycephalic dogs
- Open water access for farmed ducks
- Attitudes toward the Melbourne Cup



This year we also published a special edition of the Science Update with the aim of featuring the work of all presenters and panelists at the RSPCA Animal Welfare Seminar, as well as other published work that relates to animal welfare and climate change.

## EDUCATION

Every year, RSPCA Australia offers scholarships to encourage students to take an active interest in animal welfare issues, to support animal welfare research that might not otherwise attract funding, and to promote the objectives of the RSPCA within the research community.

RSPCA Australia also hosted a number of Doctor of Veterinary Medicine students from the University of Sydney throughout the year, joining the team through a combination of remotely and in RSPCA Australia Canberra office. This is an opportunity for the students to contribute to the work of the Science and Policy team but also to gain valuable experience working within the animal welfare sector.

### Alan White Scholarship

Offered to students for the funding of original research aimed at improving the welfare of animals in Australia.



### Gloeta Massie

'Identifying the impacts of human attitudes and actions on the welfare of rescued wildlife'

### Vijay Rawat

'Working like a dog: Examining the standards and practices related to the welfare of Australian therapy dogs'

### Sybil Emslie Animal Law Scholarship

Offered to law students and lawyers who engage in legal scholarship and practice dedicated to advancing animal welfare.



### Francesca Nyilas

for her work in international law and animal health and protection



## RESEARCH AND PRESENTATIONS

Our Science and Policy team also frequently contribute to the development and publication of important peer-reviewed research, deliver presentations and participate in panel discussions, ensuring the latest animal welfare knowledge is communicated as widely as possible.

Some highlights from this year's presentations include:

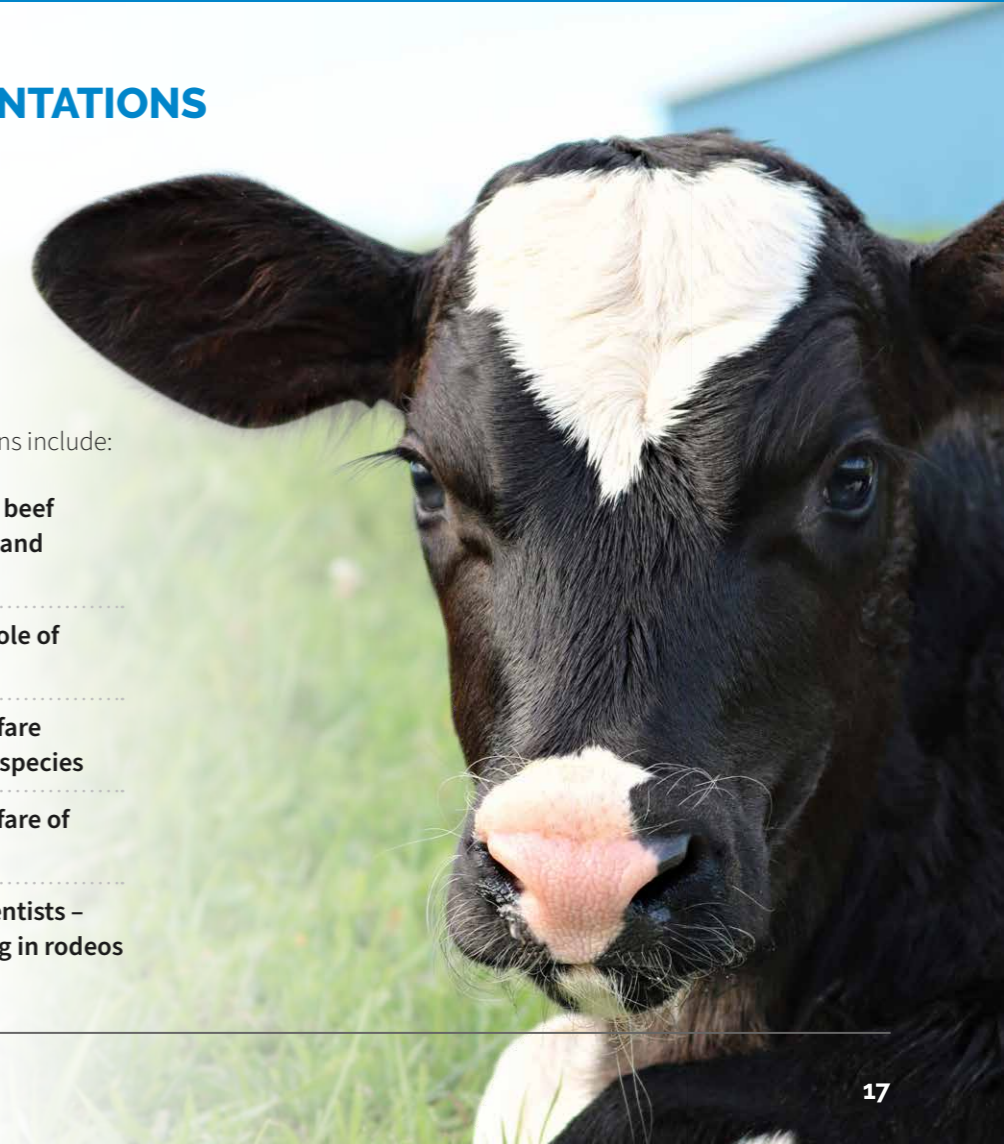
**July 2021:** Australian Dairy Farmers dairy beef forum – RSPCA perspective on dairy beef and surplus "bobby" calves

**August 2021:** University of Melbourne – Role of RSPCA in farm animal welfare

**October 2021:** University of Sydney – Welfare associated with management of invasive species

**October 2021:** University of Sydney – Welfare of animals used for sport and performance

**June 2022:** ANZ College of Veterinary Scientists – Research on welfare impacts of calf roping in rodeos



# ADVOCACY & CAMPAIGNS



**Informed by animal welfare science, the RSPCA advocates to government and industry to improve animal welfare practices and legislation. While our first preference is always to advocate directly to the responsible body to achieve change, when necessary we also mobilise our supporters so that they can take action and help secure better animal welfare outcomes.**

Our advocacy covers a range of issues across animal sectors, but this year in particular, saw significant progress being made towards two of our long-held policy issues – an end to live sheep export and a phase out of barren battery cages for layer hens.

## CLOCK IS TICKING ON LIVE SHEEP EXPORT

The future for Australian sheep is looking a lot brighter this year, after the Labor Federal Government committed to – and reaffirmed after the election – a phase out of the cruel, unsustainable and unpopular live sheep export trade.

This is great news for Australian sheep, although to ensure this actually happens, since the election our focus has been on working with the Federal Government to legislate an end date for the trade before the next federal election.

Our supporters will know that an end to live sheep export has been one of the RSPCA's top priorities for decades. Sheep exported live from Australia suffer extreme heat stress, poor conditions, space allowance that prevents them from all comfortably resting or accessing food or water at the same time, as well as risk of disease, extreme climatic changes and the risk of mortality on board. This is often followed by poor handling and

conditions and inhumane slaughter at their destination.

While an end to live sheep export for good is hopefully just around the corner, this year we also continued to work collaboratively with the Federal Government and the industry on reforms to improve welfare while the trade continues, guided by animal welfare science. In particular, we called on both the previous and current Federal Governments to abandon plans to shorten the Northern Hemisphere summer prohibition period. This included making a submission to the review conducted by the Department of Agriculture, Water and the Environment, highlighting that the proposed changes would most certainly have exposed the majority of sheep live exported to and through the Middle East to conditions that exceed known heat stress tolerance levels, and would have resulted in extremely poor animal welfare.

Based on new polling this year:

**67%**

**want to end live animal exports**

*(70% in WA – where the majority of live sheep are exported from)  
(66% in rural and country areas)*

**78%**

**oppose shortening the Northern Hemisphere summer prohibition**

\*Representative sample of n=1502 Australians, omnibus poll conducted by the Digital Edge in January 2022

## BATTERY CAGES ARE ON THEIR WAY OUT

We know that securing a phase out of battery cages for layer hens is an issue very dear to our supporters' hearts. For a hen to have a good life, she needs the freedom to move around, to stretch, flap her wings, perch and lay her eggs in a nest. She can't do any of these things in a barren battery cage.

For many years, the RSPCA has been actively campaigning against battery cages and around 5 million layer hens continue to be confined to these cages. 2022 marked the seventh year that the Australian Animal Welfare Standards and Guidelines for Poultry were under review.

This year, our Bye Bye Battery Cages campaign called on members of the community to take action and let decision-makers know they want to see an end to battery cages as soon as possible. This campaign was timely because this Poultry Standards process was a once-in-20-year opportunity to get

this right – millions more hens would continue to suffer in barren battery cages if we missed this opportunity. The campaign, supplemented by direct contact with governments and raising the issue through the media, generated over 22,000 actions including over 15,000 emails to state and territory members of Parliament, and our digital advertising was viewed hundreds of thousands of times by animal-loving Australians.

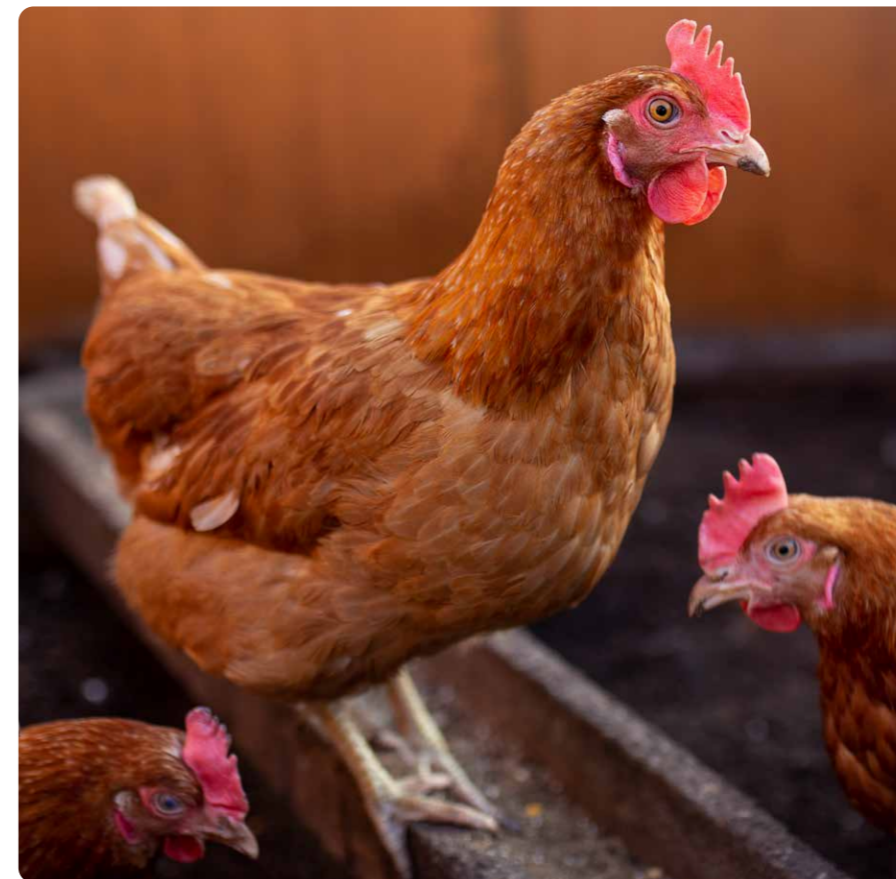
Our advocacy during 2021-22 would prove to be beneficial – in August 2022, the Standards were finalised and included a phase out date for all battery cages across Australia by 2036. The phase out date is yet to be endorsed and implemented by state and territory governments. Our advocacy going forward will focus on ensuring state and territory governments implement this phase out as soon as possible.

**77%**  
support a phase out of battery cages

**81%**  
feel concerned about hens being kept in battery cages

**87%**  
say battery cages impact their choices around purchasing/eating eggs\*

\*Kantar research from a representative sample of n=2001 Australians, March 2021



**22,366**  
actions via Bye Bye Battery Cages website



## CALF ROPING AND RODEOS

This year we ramped up our push to see an end to calf roping across Australia – one of the most terrifying and cruel practices in rodeos.

While the RSPCA wants to see an end to all rodeo events involving animals, we know that calf roping is the most serious animal welfare concern frequently taking place at rodeos across Australia today – it causes fear, injury and pain to the young animal who is forced into a chute away from other calves to then literally run for their life as they are chased by a rider on a horse.

This year, we have seen that more and more Australians are becoming concerned about the welfare of animals in rodeos, and we took the opportunity to raise awareness of these issues among our supporters and encourage them to speak up. Leading up to rodeo season, we spoke publicly about the negative animal welfare impacts of calf roping and rodeos, and in May, we saw the publication of a new paper in international journal *Animals* which highlights the need for greater legal protection for calves who are subjected to this cruel act. We also had the opportunity to present the findings at multiple conferences to share with others the significant impact calf roping has on the animals involved.

## SAFEGUARDING HORSE WELFARE

After a long process and extensive consultation with industry participants, researchers and animal welfare groups, this year the RSPCA welcomed the release of the Thoroughbred Aftercare Welfare Working Group's final report.

We know that greater attention and action is needed and why safeguarding the welfare of race horses throughout their entire lives is crucial.

The report contains strong, positive and practical recommendations for improving the welfare of thoroughbred horses and urges racing ministers, state and territory authorities and the broader thoroughbred horse industry to adopt its recommendations, such as:

- Significant commitment to development of national welfare standards – including enforceable standards for thoroughbred horses while in racing and breeding – and the development of national standards for all horses, not just thoroughbreds.
- A national traceability register for all horses, which identifies each horse individually along with their location and owners. A comprehensive, mandatory national traceability register, which allows all horses to be individually tracked from birth to death, is essential to ensuring good welfare for horses, including those who have left the racing industry.



The RSPCA will continue to call on state and territory governments, and the racing industry, to support the recommendations and work towards implementing them without delay.

## REVIEW OF ANIMAL WELFARE ACT

A long-awaited review of SA's Animal Welfare Act is also due to commence this year, and RSPCA SA is playing a key role in advising the new state government about the legislative reforms needed. These include tightened laws governing dog and cat breeders in a bid to stop low-welfare breeders, some of whom have migrated across state borders to escape stricter regulation in other states. RSPCA SA is confident the new government understands the need for legislative reforms to raise

animal welfare standards across a range of areas. This confidence stems from several government actions, including support for tightened breeder regulation and the recent legislated end to jumps racing in SA (a campaign in which RSPCA SA played a leading role).



## MULESING OF SHEEP

We know that it is unacceptable to continue to breed sheep that are susceptible to flystrike and therefore require mulesing or other breech modification procedure to manage flystrike risk. Instead, the humane and more effective solution is to breed plainer-bodied sheep that are naturally resistant to flystrike. These sheep genetics are available now and we have been asking wool industry leaders to step up and help wool growers transition to a non-mulesed flock as quickly as possible.

This year, the RSPCA partnered with FOUR PAWS and Humane Society International Australia to work towards achieving an end to mulesing. Together, we have been in regular contact with major international brands and the Australian wool industry in response to demand for non-mulesed wool that is stronger than ever. We hope our combined engagement with increasing pressure from consumers (and wool buyers) is going to bring about meaningful, industry-wide change.

We welcomed this year, a new funding commitment from the wool industry for extension initiatives aimed at breeding flystrike-resistant sheep. These extension initiatives will hopefully help wool growers understand and implement the genetic tools available to them to phase out mulesing.



## PETS GETTING HOME FASTER

Prior to the 2018 state election, RSPCA Victoria successfully advocated for lost pets to be directly reunited with their owners with the Labor Government committing to make this change. Preceding 1 March 2022, under the Domestic Animals Act 1994, veterinary practices and other animal shelters could not lawfully reunite stray pets with their owners unless they had established an agreement with the local council.

The Domestic Animals Amendment (Reuniting Pets and Other Matters) Act 2022 passed the Victorian Parliament on 24 February 2022 and obtained Royal Assent on 1 March 2022. The RP Bill introduced a range of changes to the Domestic Animals Act 1994.

The changes deliver the Victorian Government's election commitment to allow participating



vets and registered animal shelters to directly reunite lost cats and dogs with their owners.



## RSPCA TAS ADVOCACY

Some of RSPCA Tasmania's key advocacy areas for the year have included:

- Advocating for tenancy laws to be updated to ensure affordable and secure rental accommodation is accessible for families to stay together with their much-loved animals long-term.
- Being one of the stakeholders in an e-petition against continued Tasmanian government funding of greyhound racing, reaching a record 13,519 signatures.
- Welcoming amendments to the Animal Welfare Act, including banning the use of pronged collars, giving authorised officers greater power to enter properties and seize animals, and greater sentencing options for animal cruelty and aggravated cruelty.



# EDUCATION, COLLABORATION & ENGAGEMENT



Whether it's providing advice to consumers about choosing higher welfare food or responsible pet ownership, sitting on industry or government working groups, or producing resources for businesses to improve their animal welfare policies, working collaboratively with stakeholders and positively describing the change we seek is a key part of our work at the RSPCA. This is one of the most effective ways that we can drive positive change, by working collaboratively and constructively to achieve common goals, all in the best interests of animals.

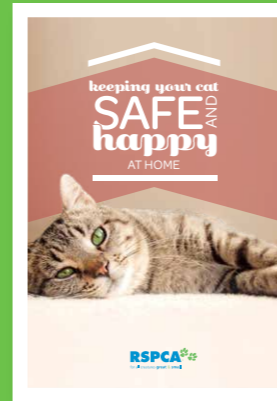
## DOGS WITH EXAGGERATED FEATURES

This year, we continued our work to raise awareness of the risks to the health and welfare of dogs with exaggerated features and our work on this will continue and develop. The health and welfare of dogs, rather than their appearance, should be the priority for all stakeholders including current and prospective dog owners, breeders, people involved in showing dogs, and kennel clubs and breed clubs/associations. We will continue to raise awareness of the vital role current and potential dog owners play in helping to improve the welfare and lives of dogs with exaggerated features.

In better news though, this year saw a greater awareness among the community of the health issues experienced by these breeds, with several positive media stories (including our own Chief Science Officer, Dr Suzie Fowler on The Project!) and increasing moves overseas to better regulate the breeding of certain dog breeds with exaggerated features.



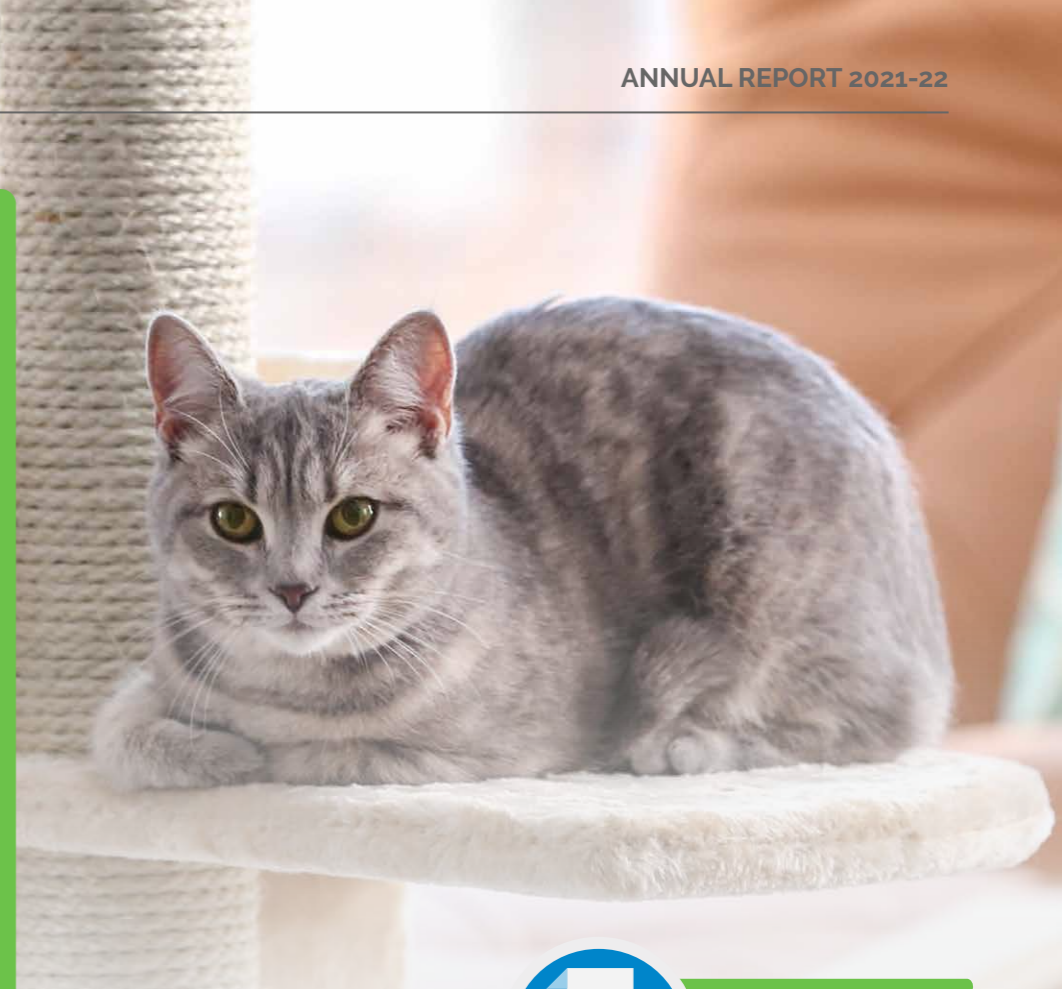
To find out more: visit our [Love is Blind website](#), developed in collaboration with the Australian Veterinary Association.



## SAFE AND HAPPY CATS

The community increasingly understands that cats are safest at home. Keeping your cat safe at home reduces the risk of them getting infectious diseases or injured by cars, dogs or other cats – and cats can be healthy and happy at home as long as their environment meets their physical and mental needs.

This year we continued to promote our Safe and Happy Cats microsite – and were pleased to get over 9,500 views – and develop and promote resources to ensure the community has the information they need to keep their cats safe and happy at home, whether indoors with secure outdoor access or purely indoors.



## KEEPING CATS SAFE AT HOME:



Keeping Cats Safe at Home is a ground-breaking RSPCA NSW project running for over four years and working with 11 councils across NSW to provide cat lovers with the inspiration, motivation and information needed to help their cats live long, healthy, and enriched lives. The aim is to encourage and support cat owners to prevent their cats from roaming away from their properties both to

keep cats safe and to protect native wildlife. Social science and ecology research will be undertaken to monitor the effectiveness of the campaign so we can apply what we learn in other locations in NSW and further afield. Responsible cat ownership, including desexing and containment, is the answer to reducing cat euthanasia rates and keeping cats out of pounds and shelters.

## COVID-19 AND ANIMALS

The pandemic is still with us, and as a leading source of animal welfare science-based information, the RSPCA has been keeping across the latest research on how the pandemic affects animals. We updated information on

our Knowledgebase and worked closely with others in the animal welfare sector to help provide answers to questions such as: What do I need to do to safeguard my pets welfare during the COVID- 10 pandemic? Can people

infect pets with the novel coronavirus that causes COVID-19? Do animals get infected with SARS CoV2 or get COVID-19? This is a constantly changing area but you'll find the latest info on the RSPCA Knowledgebase.

## HELPING AUSTRALIANS CHOOSE CAGE-FREE EGGS

The RSPCA has continued our efforts to improve layer hen welfare, with the topic increasingly top of mind for many of our supporters. It's no wonder, with approximately 5 million hens in Australia still confined to battery cages, but also, a permanent shift away from battery cages on the horizon.

### Choose Wisely

Driving a shift away from cage eggs is more important than ever and our Choose Wisely initiative is helping to showcase cafés and restaurants that are sourcing cage-free eggs. These businesses are proving every day how easy it is to have a successful and profitable business which promotes good animal welfare.

The list of cafés and restaurants sourcing cage-free eggs on our Choose Wisely directory has continued to grow, with businesses and customers submitting nominations for registry. The Choose Wisely directory continues to be a valuable source for Australians to support businesses choosing cage-free eggs when they are dining out, with the webpage receiving **637 views, 8 new business sign-ups and 18 new nominations this past year.** It has been encouraging to see more and more people actively seeking cage-free eggs, sending the strong message that Australians are more than ready to say bye bye to battery cages.

**WE PROUDLY USE  
CAGE-FREE EGGS**

which is why we've signed up to the RSPCA's Choose Wisely initiative.

**CHOOSE WISELY.**  
PUTTING HUMANITY FIRST ON THE MENU



### Cage Free & Proud

This year we continued to support businesses sourcing cage-free eggs, alongside providing resources for Australians looking for cage-free alternatives in the products they buy and when dining out. Our Cage Free & Proud directory now boasts 93 brands that have switched or committed to sourcing cage-free eggs.



### Cheeky Chooks

Cheeky Chooks - the RSPCA's free, educational mobile game - introduces players to the quirky and inquisitive nature of layer hens and highlights the things they need to have a good life. Cheeky Chooks aims to assist young Australians aged 8-13 to form a connection with hens through a fun and interactive resource, and this year, we launched a social media competition where players could design their very own Cheeky Chook, with the winning design to be included

in the game. Three designs were chosen to be brought to life by our development partner Trilum Studios, and the winning entrants were sent a prize pack of Cheeky Chooks merchandise. Cheeky Chooks gained 140,000+ new users for the 2021-2022 financial year, and continues to be a valuable resource for sparking conversations about animal welfare with younger Australians and how it relates to the food we eat - whether it be at home, at school or when eating out.



In Western Australia, 2021-22 saw the passage of laws to regulate dog breeding. This has been a long 4-year process (and still counting).

It all started in 2017 when the WA Government announced a working group to develop regulations around indiscriminate dog breeding (i.e. puppy farming) in WA. RSPCA WA was at the table, along with stakeholders from government, industry and other animal welfare bodies, to help drive this forward. Proposed legislation—the Dog Amendment (Stop Puppy Farming) Bill 2020—was introduced to WA Parliament in February 2020, but was delayed when COVID set in.

In December 2021, the Bill was finally passed into law.

While we're still waiting for the laws to be enacted, we're pleased to see some progress to end indiscriminate dog breeding in WA.

You can find out more about the process, our involvement and the what the new laws cover here: [rspcawa.org.au/stop-puppy-farming#rspca-puppyfarm](https://rspcawa.org.au/stop-puppy-farming#rspca-puppyfarm)



In Victoria, the Mildura Loves Pets team have successfully completed two vaccination events which resulted in 175 dogs being protected from parvovirus (with the support of the RSPCA clinic teams). Every vaccine helps with our goal of achieving herd immunity in the Mildura area. Dog owners were invited to come along to our vaccination days where our skilled vets and vet nurses provided a health check and vaccine. The community was so grateful and welcoming and thanked the team for providing this vital service in partnership with local vet clinics. The dogs were happy too as there were plenty of treats to go around.

### RSPCA Australia was represented this year on the following government and industry committees and working groups:

Animal Welfare Standards & Guidelines (Livestock at processing establishments)

Australian Beef Sustainability Framework Consultative Committee

Australian Maritime Safety Authority Livestock Advisory Committee

Australian and New Zealand Council for the Care of Animals in Research and Teaching Animal Research Openness Agreement

Dairy Industry Sustainability Consultative Forum

Dairy Moving Forward Animal Husbandry Steering Group

Kangaroo Island Feral Cat Eradication Steering Committee

Kangaroo Island Feral Pig Eradication Steering Committee

Live Export Animal Welfare Working Group

National Animal Welfare Research Development & Extension Strategy Steering Committee (observer)

National Domestic Cat Management Working Group

National Feral Cat Taskforce

Pet Food Review Working Group

Standards Australia committee for the Australian Standard for the training and use of privately contracted security and detection dogs

The Animal Welfare Collaborative Advisory Panel

Thoroughbred Aftercare Welfare Working Group

WA Biodiversity Science Institute Feral Cat Research Advisory Panel

# RSPCA APPROVED FARMING SCHEME



The RSPCA Approved Farming Scheme works closely with dedicated farmers and forward-thinking brands to make a positive impact on the lives of Australia's most intensively farmed animals through a robust program of assessment, certification and engagement, all underpinned by RSPCA's detailed animal welfare standards.

In 2021, 609 million animals benefitted from higher welfare conditions thanks to the Scheme. 539 farms participated in the Scheme, with 1,177 assessments conducted at these farms. There are now 38 licensees sourcing RSPCA Approved products from 14 Producers with more than 1000 products available. The continued success of the Scheme is possible only because of the commitment of dedicated farmers and the caring Australians that have chosen certified higher welfare when purchasing eggs, meat and fish products.

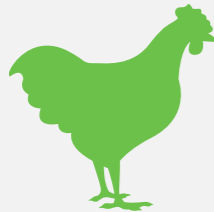
## OUR IMPACT

Animals raised to the standards in 2021:

**92,348**

**LAYER HENS\***

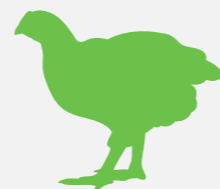
0.5% of market share



**602,239,342**

**MEAT CHICKENS\***

86.9% of market share



**6,225,887**

**SALMON\*\*\***

40.9% of market share



**235,632**

**TURKEYS\*\***

9.4% of market share



**86,843**

**PIGS\***

1.5% of market share



**TOTAL ANIMALS**

**608,880,052**

\* Based on ABS data

\*\* Based on industry supplied data

\*\*\* Based on ABARES/FRDC data

Note: No producers have farmed to the RSPCA Standard for dairy calves

Developed and reviewed by RSPCA Australia's science team, the RSPCA standards that underpin the Scheme are informed by the best available animal welfare science, RSPCA policy, leading farming practices in Australia and overseas, and consider the commercial realities associated with farming. This year, the review of the RSPCA Approved layer hen and pullet Standards commenced involving a review of the relevant animal welfare literature as well as consultation with egg industry stakeholders to ensure we continue to set participating egg farms on a pathway of continuous improvement.

RSPCA Assessors are at the frontline of our operations, travelling around Australia to often very remote locations, meeting with farmers and conducting

rigorous assessments of farms and abattoirs to ensure our detailed standards are being upheld. Their work often necessitates leaving their homes and families for days at a time, and their passion and dedication to ensuring the requirements of the Standard are upheld is invaluable.

On a typical farm or abattoir assessment, an Assessor will carefully evaluate the animal's behaviour and their overall physical state, as well as the environmental conditions such as bedding, shelter, ventilation, and enrichment, and how the animals are managed. Assessors will also review documents and historical records, and CCTV footage where necessary, to understand conformance and practices at other times that are outside of the scope of an assessment.

A typical assessment can last anywhere from a couple of hours, which may permit our Assessors to conduct several assessments each day, to a couple of days depending on the size and complexity of the farming operations being assessed. With hundreds of farms participating in the Scheme there are a lot of locations to travel to.

We also like to highlight the dedicated individuals who make up our RSPCA Approved Assessors team – for example this year we farewelled Janet, who recently began her well-deserved retirement after seven years as an Assessor and a career in poultry spanning forty years prior. In her time as an Assessor, Janet visited an incredible 611 farms, conducted 1803 assessments, and spent 980 nights away from home in regional locations.

## OUR ASSESSMENTS

**1107** MEAT CHICKEN FARM ASSESSMENTS

**25** TURKEY FARM ASSESSMENTS

**22** PIG FARM ASSESSMENTS

**18** SALMON SITE & HANDLING PROCESS ASSESSMENTS

**5** LAYER HEN FARM ASSESSMENTS

**28** ABATTOIR ASSESSMENTS

Conducted in 2021





## WHAT'S NEWS IN RSPCA APPROVED

The RSPCA Approved Farming Scheme team has had a busy year. In addition to our work assessing and certifying Producers and working with food companies to source certified higher welfare products, we've had a number of exciting projects come to fruition.

The RSPCA Approved website has undergone a refresh to improve usability and provide more information resources. Additional pages to assist Producers and Licensees to **get certified**, information on the **certification process** and a user-friendly standards comparison table on our **standards page**. In addition, the team has published many informative

blog pieces focusing on raising consumer awareness of farm animal welfare issues and their solutions. These have included posts on where to shop for higher-welfare products, brands leading the way in farm animal welfare and how to support higher-welfare farming.

We revamped our traceability program, including publishing a **Chain of Custody Standard** and revised **Chain of Custody assessment program** to ensure more effective traceability of RSPCA Approved products across all parts of the supply chain for Licensees, an increasing area of importance for consumers.

And let's not forget, the Scheme also celebrated our 25-year anniversary, an achievement we are incredibly proud of most importantly because of the sheer number of animals who have benefitted from higher-welfare farming under the Scheme. Celebrating this milestone allowed everyone involved, including the RSPCA team, our Assessors, Certification Body, farmers, brands and stakeholders, to reflect on all the Scheme has managed to achieve, and to look ahead at what still needs to be done to further raise the bar for better farm animal welfare.

## BRINGING NEW BRANDS ON BOARD

Our work encouraging food companies and brands to support a better future for Australia's farm animals has continued to grow. This year, we held 87 meetings with various food companies to discuss farm animal welfare – in particular, ways they can continually improve, and source higher welfare products.

Highlights include welcoming new licensees Barossa Fine Foods (chicken and free-range pork), Simone Logue, Small Batch and Subway meats, the latter of which is one of Adelaide's largest and most respected wholesalers. These brands have worked diligently to meet the RSPCA Standard and are passionate about providing quality products and sourcing responsibly from higher-welfare farms.

In other exciting news, Woolworths launched their own range of fresh farmed Atlantic salmon with RSPCA Approved certification. There are over 500 requirements for farmed Atlantic salmon within the RSPCA's Standard that prioritise animal welfare for the entire life cycle of the fish. Woolworths has been working closely with the RSPCA to improve the welfare of farm animals in their supply chain, and with aquaculture reported by the United Nations to be the fastest growing animal protein sector, having more brands committed to fish welfare and sourcing RSPCA Approved salmon is of major importance for the future.

### New Licensees:



# SUPPORTING THE FEDERATION



**RSPCA Australia supports the wider RSPCA federation in their life-saving work rehoming animals and investigating animal cruelty. This includes providing support and coordination for national initiatives, including our valuable corporate partnerships.**

We are extremely grateful for the generosity of our national partners, their staff, customers and the wider business community. Their continued support helps the RSPCA provide vital animal welfare services across Australia.

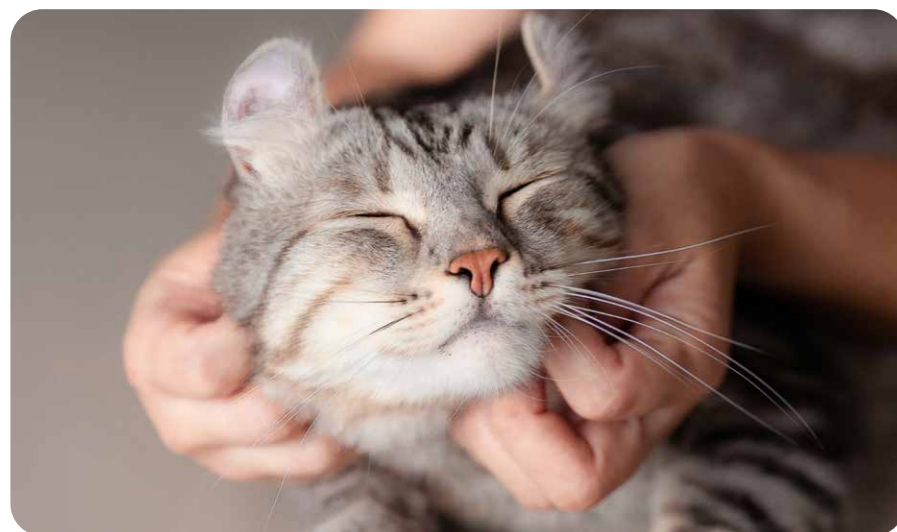
This year we welcomed on board Royal Canin as our Official National Nutritional Partner, supplying and delivering food for animals in all RSPCA shelters, sponsoring the national Million Paws Walk, and many other initiatives including our national Kitten Protector fundraising campaign, encouraging Australians

to donate to provide critical care to neglected and unwanted kittens, and a national partnership with Terracycle allowing people to recycle used pet food packaging at RSPCA shelters.

We continued our close work with Elanco as RSPCA's official National Pet Health Partner, supplying and delivering all Advocate and Cedillo Plus parasiticides for dogs and cats across all shelters. Elanco also worked with RSPCA to produce a beautiful 'We Believe' TV campaign that showcases the varied and vital work of the RSPCA.

This year also saw the tenth anniversary of our partnership with Petbarn. The RSPCA's National Adoption Partner has helped tens of thousands of animals find homes through Petbarn stores. With the first RSPCA adoptions in Petbarn stores taking place in NSW in 2012, the partnership has grown to include 125 in-store Petbarn adoption centres across the country, which altogether have seen over 47,198 dogs, cats, puppies, kittens and rabbits rehomed over the past 10 years. Petbarn also returns 100 per cent of adoption fees to the RSPCA — to date, \$5 million in adoption fees nationally which has helped the RSPCA continue their vital, life-saving work. We also remain incredibly grateful for the ongoing support of the Petbarn Foundation and in particular its support to help us care for senior pets and foster animals.

We would like to thank Proviro Group, Oh Crap Dog Poop Bags and Kong for the ongoing support and the delivery of quality products to our shelters nationwide.



We would like to thank Peter Alexander, one of our biggest ongoing supporters, using his profile and business to generate funds for the RSPCA, for example, by selling seasonal fundraising chocolates and donating the proceeds.

We helped coordinate the RSPCA's annual 'Give to Get Them Home' appeal which helps care for the thousands of animals across the country who come through the RSPCA's doors. This year, we saw donations made to the RSPCA double thanks to the generous support of national partners Peter Alexander and Elanco. **In 2021-22 over 11,200 people raised \$2,373,448 during Give to Get Them Home** thanks to our matching partners – amazing generosity that will contribute to the RSPCA's life-saving work across the country.

This year we also say a big thank you to our Workplace Giving partners. Workplace giving allows employees to make regular donations from their pay to the RSPCA and claim an immediate tax deduction. RSPCA's workplace giving program currently has over 110 organisations that are actively donating and in total has achieved \$651,842 in donations this year. A big thanks to all our Workplace Giving partners for their ongoing support!



## EMERGENCY PET SUPPLIES

In 2021-2022, RSPCA Victoria and Safe Steps Family Violence Response Centre formed a partnership to support pet owners in domestic violence situations. The partnership explored a range of initiatives together, including emergency boarding for pets, provision of education services and behavioural training for pets who have experienced trauma, as well as the provision of emergency supplies for pets.

In partnership with Petbarn Foundation, the community outreach team put together 62 boxes of animal care and enrichment supplies.

## FLOOD RELIEF EFFORTS

RSPCA NSW staff and volunteers gave up their time to help with the flood relief points. Pallets of much needed pet supplies have been handed out including over 100 bags of dog food and cat food, kitty litter, leads, collars, blankets, beds, and toys. The presence of RSPCA NSW in the flood-affected communities resulted in more than 120 households and their

pets receiving immediate care and supplies. RSPCA NSW emergency response vets also provided care for flood-related injuries and infections to animals on the ground and liaised with NSW SES to access communities cut off and isolated by the floods.

We would like to thank these resilient communities for

welcoming us with open arms, and paws. The commitment to the care and safety of their pets is incredibly heartwarming, and reminds us of why we do, what we do.





## CONSTRUCTION UNDERWAY ON NEW CENTRE

This year, RSPCA Victoria started construction on a new Cat and Small Animal (CASA) Care Centre at RSPCA Peninsula. Once completed, the new CASA Care Centre will enable best-practice care and shelter for more than 2,500 cats, rabbits and guinea pigs annually. In April 2022, RSPCA Victoria held a small ground-breaking event to officially mark the start of works on the CASA Care Centre.

## RELOCATION TO NEW ANIMAL CARE CAMPUS

In South Australia, works continue for relocating to a new, purpose-built Animal Care Campus located within Glenthorne National Park at O'Halloran Hill. Incorporating SA's first wildlife hospital, as well as state-of-the-art veterinary and animal accommodation facilities, the new Campus will bring all of RSPCA SA's operations to one site for the first time. Of particular importance will be the Campus' role as an education hub. More than 500 primary school teachers are now engaging their students in RSPCA's AWARE education programme, and the new Campus includes an education centre that will provide animal care and welfare education to schools and the community. Trainee vets and vet nurses will also have the opportunity to

access the Campus for learning, including specialist training in wildlife treatment. The new wildlife hospital will fulfill a key recommendation made in the final report of the state government's Wildlife and Habitat Bushfire Recovery Taskforce, formed in the aftermath of the devastating 2020 bushfires. Anyone interested in learning more about RSPCA SA's new Animal Care Campus and contributing to this major development can go to [carecampus.rspcasa.org.au](http://carecampus.rspcasa.org.au)



## OPENING OF THE NEW RSPCA NSW ADOPTION AND EDUCATION CENTRE IN SYDNEY (YAGOONA)

This year, the new state-of-the-art Sydney Adoption and Education Centre was officially opened by NSW Premier and RSPCA NSW Patron, Dominic Perrottet on 27 April 2022. The largest animal shelter in NSW was jointly funded by the NSW Government and RSPCA NSW's community of animal lovers and will assist RSPCA NSW in continuing to

prioritise the physical and emotional wellbeing of their animals, with state-of-the-art innovations including acoustic-controlled kennels, hydronic underfloor heating, and environmental enrichment mechanisms in the design. Animal lovers, neighbours, friends, families, the community at large are welcome to visit RSPCA NSW, meet the animals, adopt or foster care, volunteer, donate, and be a part of creating a better future.



## RSPCA QLD COMMUNITY OUTREACH

Since October 2021, RSPCA Queensland's Community Outreach and Education team has assisted people and their pets in areas where our Inspectors have been responding to the highest number of animal welfare

complaints. Moreton Bay was identified as most in need due to 1,586 animal welfare complaints recorded in the last financial year - the most in the state within any one local council area.

Over a nine-month period, the team have supported 227 vulnerable pet owners and 277 pets. Providing free access to veterinary health checks, vaccinations, flea, tick and worming preventatives, desexing, microchipping, food and enrichment, as well as providing key educational advice to support these pet owners to become responsible pet owners.

Partnering with human welfare services the aim is to address the cause of animal welfare issues proactively and holistically.

Our Community Outreach & Education team are repositioning RSPCA in Queensland from reactively bringing animals into care in our shelters, to proactively supporting pet owners and their animals within communities. Our aim is to support the premise that 'People & Pets are Better Together'.



## RSPCA ACT CONTINUES TO HELP THE CANBERRA COMMUNITY WITH PROJECT: SAFE

**Project: Safe** is a program designed to support keeping human and animal families together. The Australian Capital Territory offer this program for vulnerable families fleeing domestic violence, who may have fallen into homelessness or are recovering in hospital. The

program is designed to help protect pets in times of crisis, and hopefully reunite with their families when they're back on their feet.

During this last financial year, the Australian Capital Territory secured funding from donors to extend their canine emergency boarding area.

It was imperative to build a dedicated space for these animals to feel settled and protected while they are in care. This follows from the previous financial year when ACT extended their cattery emergency boarding capabilities.

## COMMUNITY MICROCHIPPING DAYS

RSPCA Darwin was very fortunate to be successful in gaining a NT Government Community Benefit Fund grant to assist our Vet Clinic with costs to provide free community microchipping to the greater Darwin community.

Animals at large in the Top End during storm season is a considerable problem, with a large percentage of animals found by the local councils having no form of ID.

By offering free microchipping to Top End pet owners, we hoped to help relieve some of this pressure and stress for all involved. With support from the Animal Management teams from our three local councils, staff and volunteers, we held two fun and very successful microchipping days at the shelter. There was plenty of cuddles to go around from the tiniest of pups to the gentlest of giants, Council staff answered a barrage of questions and we were able to administer a microchips to over 130 animals. Success!

With our very first free microchipping events proving to be a success and a forecast of an active cyclone season ahead of us. We will be reaching out to the Top End community before the storms arrive to ensure as many animals as possible are microchipped, ensuring they can be reunited with their families as quickly and efficiently as possible when they find themselves lost and scared.



# FINANCIALS

## RSPCA Australia receives and distributes donations from the community and other fundraising income to RSPCA member Societies.

A small proportion of revenue comes from royalties through arrangements with corporate partners, which forms part of our distribution to member Societies. RSPCA member Societies in each state and territory deliver animal services including adoptions and inspectorates.

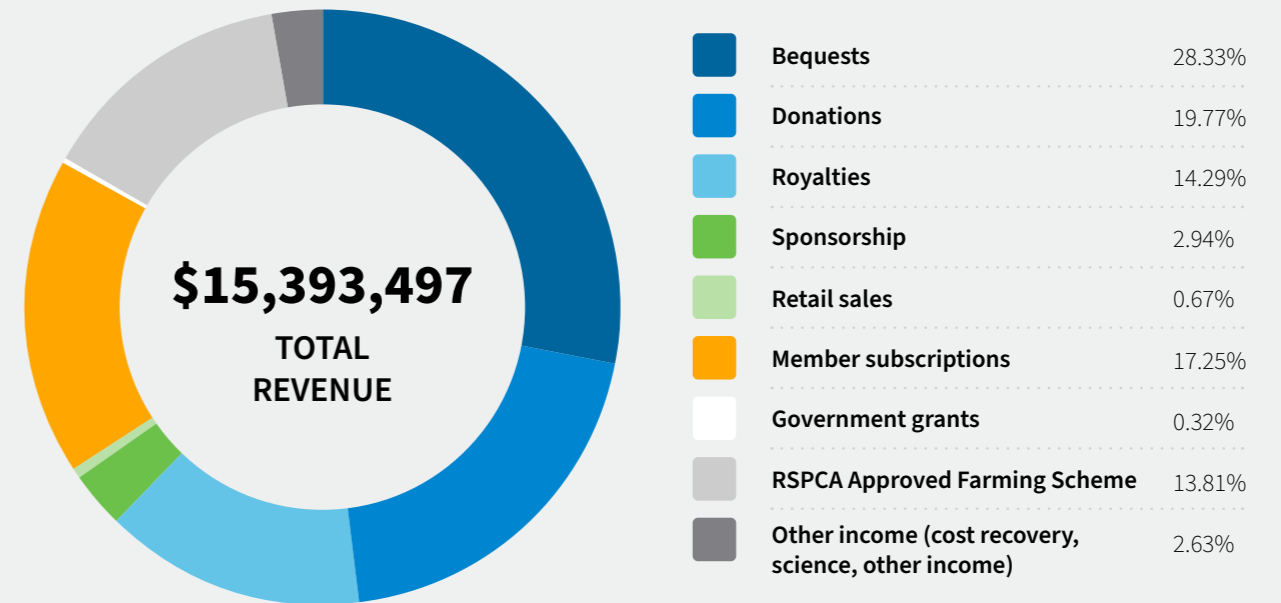
All income generated by the RSPCA Approved Farming Scheme goes towards the costs of running the Scheme, including assessment and certification, marketing and engagement, and operational costs. Donations to the RSPCA do not fund the RSPCA Approved Farming

Scheme and any surplus generated by the Scheme is quarantined and invested back into further development of the Scheme.

RSPCA Australia's full audited financial statements can be found on the ACNC website.

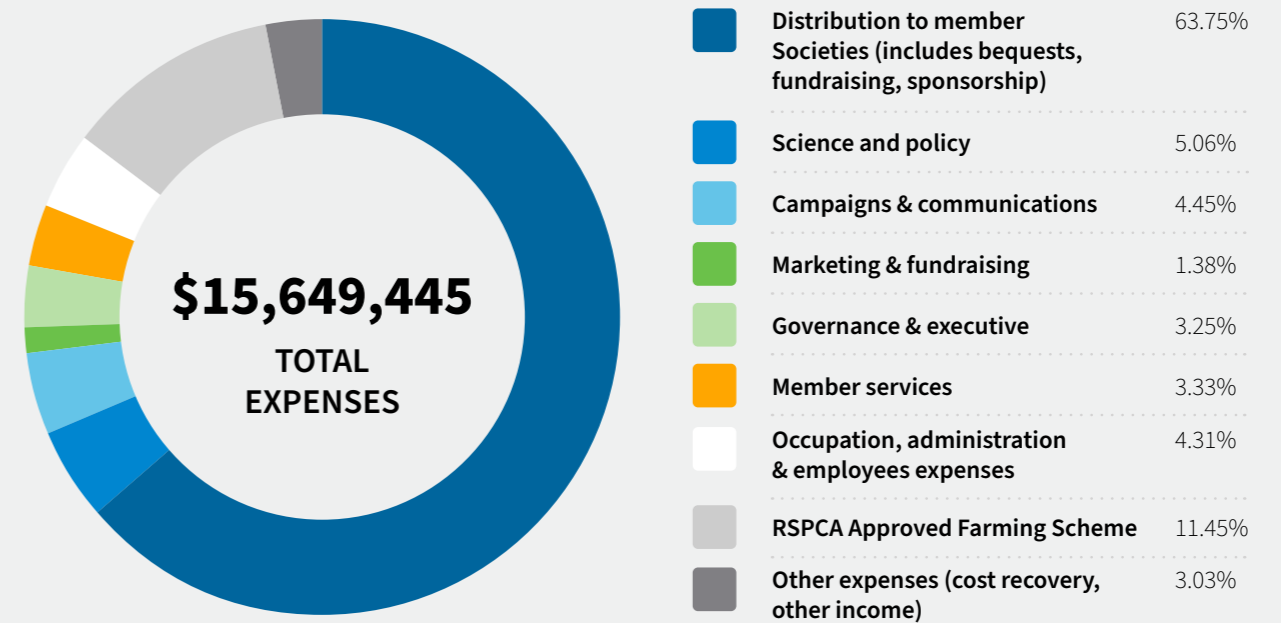
## KEY AREAS OF REVENUE AND EXPENDITURE 2021-22

### RSPCA AUSTRALIA REVENUE:



RSPCA Australia also recorded a \$363,930 loss on investments during 2021-22, making total revenue \$15,031,567.

### RSPCA AUSTRALIA EXPENDITURE:





## ***Thank you***

**The RSPCA's partnership with Hill's Pet Nutrition ended in December 2021. We express our warm thanks for the support of Hill's throughout our 24 year association.**

During this time they provided premium food for the cats and dogs under our shelter and foster care, as well as sponsoring RSPCA events and activities such as the Million Paws Walk. We are grateful to Hill's for their consistent and valuable assistance over the years.



*Thank you for  
your support ...*



for all creatures **great & small**

PO Box 265  
Deakin West ACT 2600

02 6282 8300

[rspca@rspca.org.au](mailto:rspca@rspca.org.au)

[rspca.org.au](http://rspca.org.au)