



Annual Report 2019

If you have any

Index

- Editorial 3**
- Key Data 4**
- Clinical Trials and Projects of ETOP 4**
 - Clinical Trials5
 - Non-Interventional Projects8
 - New ETOP Projects9
 - Research on Quality of Life in ETOP Trials 10
- Scientific Publications 11**
- ETOP Activities 2019 12**
 - Race For Life..... 12
- Meetings 2019 13**
 - Foundation Council Meetings 13
 - Independent Data Monitoring Committee (IDMC) Meetings 13
 - Meetings under the Auspices of ETOP and in Collaboration with ETOP 13
 - Lungscape Pathologists and Mesoscape Meetings 13
 - ETOP Residential Workshop and Annual Meeting 14
- Personnel Changes in the Coordinating Office 15**
- Collaborative Activities 15**
 - ETOP Conference Slide Decks 15
- Group Structure 16**
 - ETOP 10-Year Anniversary 16
 - ETOP Foundation Council..... 17
 - ETOP Scientific Committee 17
 - Independent Data Monitoring Committee (IDMC) 17
 - ETOP Organigram..... 18
- Funding of Research 18**
- Financial Statement 2019 19**

Editorial

Dear Reader

ETOP celebrated its 10th anniversary in 2019! For a decade, we have pursued with commitment the goals we have set ourselves in order to master major tasks in a growing worldwide network. With success! ETOP makes an important contribution to the knowledge available today about the treatment of lung cancer. Through access to scientific data and results, researchers and physicians learn and are stimulated to undertake new projects. ETOP provides the necessary platform for this exchange.

This success deserves our highest recognition and our extraordinary thanks for the cooperation with all participants so far.

On the following pages, you will find information about our research activities and the most important events of the past year. We wish you an exciting time reading.

Kind regards



Prof. Rolf A. Stahel
President, ETOP Foundation
Council



Prof. Solange Peters
Scientific Coordinator and member of the
Foundation Council

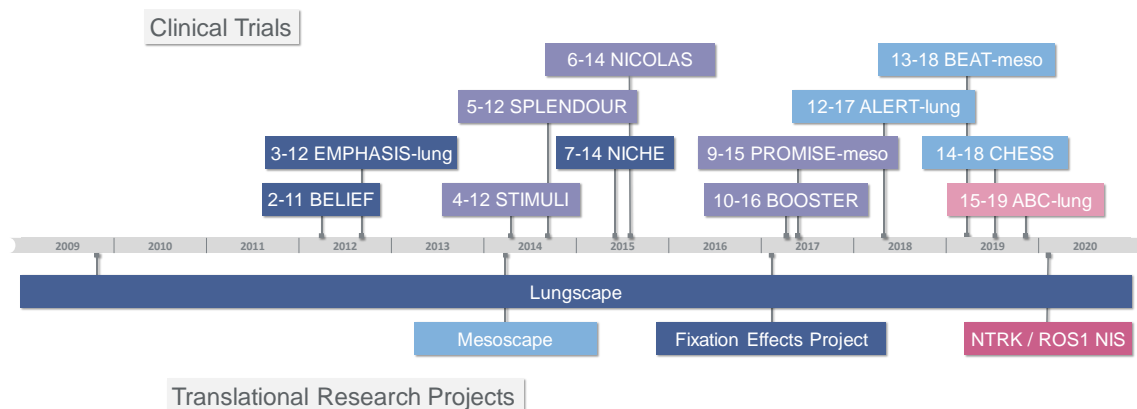
Key Data

Publications	2019	Overall
Full publications	7	18
Published abstracts	3	35
Meeting contributions	2019	Overall
Oral presentations	2	15
Posters	1	24
Clinical trials	Overall	
Closed trials	3	
Open trials	9	
<i>Trials that are closed to accrual</i>	5	
<i>Recruiting trials</i>	3	
<i>Newly launched trials that are not yet recruiting</i>	1	

Clinical Trials and Projects of ETOP

Since its foundation, ETOP has developed 12 clinical trials and has also established a number of non-interventional projects, so-called observational studies. These are either part of clinical studies or independent projects. An observational study is characterised by the fact that the conditions under investigation are not consciously controlled.

To date, more than 5000 patients have participated in the clinical trials and projects coordinated by ETOP. By the end of 2019, a total of three trials were open for patient recruitment, and one trial is in the activation phase.



■ closed | ■ closed accrual, follow-up ongoing | ■ recruiting | ■ under activation | ■ in development

Clinical Trials

Number of patients recruited in clinical trials of ETOP:

Number of patients in clinical trials of ETOP:		
Closed trials	2019	Total patients
2-11 BELIEF	--	110
3-12 EMPHASIS-lung	--	81
7-14 NICHE	--	13
Open trials		
4-12 STIMULI	41	264
5-12 SPLENDOUR	--	514
6-14 NICOLAS	--	94
9-15 PROMISE-meso	--	144
10-16 BOOSTER	4	155
12-17 ALERT-lung	9	12
13-18 BEAT-meso	67	67
14-18 CHESS	3	3
15-19 ABC-lung	0	0
Total patients in ETOP-sponsored clinical trials	124	1457
Total patients from ETOP centers in non-ETOP sponsored clinical trials	112	371
Total patients in clinical trials from ETOP centers	236	1828

ETOP 2-11 BELIEF

BELIEF is an international, single-arm phase II clinical trial investigating whether primary therapy with erlotinib and bevacizumab improves progression-free survival in patients with non-small cell lung cancer (NSCLC) and activating EGFR mutation (del19 or L858R). Recruitment was completed in October 2014. The number of patients was 109. The results of the primary analysis were published in 2017 and show that the addition of bevacizumab to erlotinib improves progression-free survival in this patient population. Overall survival data, together with translational research results, were published in 2019.

ETOP / IFCT 4-12 STIMULI

STIMULI is an international, randomised, unblinded phase II clinical trial investigating the effect of the two immune checkpoint inhibitors ipilimumab and nivolumab as consolidation therapy after completion of chemo- and radiotherapy in patients with small cell lung cancer (SCLC) in limited stage. This ETOP trial is conducted in collaboration with the French group IFCT and is ongoing in Switzerland, Belgium, Germany, France, Spain, the UK and Australia. The trial was closed early in 2019 due to slow recruitment with a caseload of 264 randomised patients. Results of the primary analysis are expected during the coming year.

ETOP 5-12 / EORTC 08111 SPLENDOUR

RANKL stimulates NF-kappaB-dependent cellular signaling processes and acts as a primary signal for bone resorption. Denosumab is a therapeutic antibody that inhibits the function of RANKL. SPLENDOUR, an international, randomised, unblinded phase III clinical trial, investigates the administration of Denosumab in addition to standard

primary chemotherapy in advanced non-small cell lung cancer (NSCLC) with or without bone metastases. This ETOP trial is conducted in collaboration with EORTC as the coordinating group. Patient recruitment was completed in January 2018, with a total of 514 randomised patients.

In the analysis of the results, no positive effect on prolonging life could be shown for denosumab, regardless of whether the patients had bone metastases or not. Publication of the results is expected in 2020.

ETOP 6-14 NICOLAS

NICOLAS is an international, single-arm phase II clinical trial in patients with locally advanced non-small cell lung cancer (NSCLC). The trial investigates the tolerability of immunotherapy with the antibody Nivolumab in combination with a standard primary treatment consisting of chemotherapy and radiotherapy. The primary endpoint is the rate of occurrence of pneumonitis events.

The trial had already reached its recruitment target of 43 patients in June 2017. In order to provide additional information on effectiveness, the trial protocol was modified in favor of increasing the number of cases. Recruitment was completed in August 2018 with a total of 94 patients.

The results of the primary analysis were presented this year at the ESMO Congress in Barcelona.

ETOP 8-15 / EORTC 1416 PEARLS / KEYNOTE-091

PEARLS is a triple-blind, placebo-controlled, randomised phase III clinical trial. It investigates the benefit of one-year adjuvant pembrolizumab treatment after radical surgery (lobectomy/pneumonectomy) in patients with early-stage non-small cell lung cancer (NSCLC). A total of 1380 patients will be enrolled in the trial. The trial is sponsored by MSD and coordinated by EORTC. Australia, Austria, Belgium, Brazil, Canada, Chile, Czech Republic, Denmark, Estonia, France, Germany, Greece, Hungary, Ireland, Israel, Italy, Japan, the Netherlands, Poland, Portugal, Slovenia, Spain, Switzerland and the United Kingdom are participating in the trial.

The caseload of 1111 patients, 352 of them from ETOP centres, was reached in 2019. Treatment and follow-up of the included patients is still ongoing.

ETOP 9-15 PROMISE-meso

PROMISE-meso is a randomised, unblinded phase III clinical trial comparing pembrolizumab for the treatment of advanced, pretreated malignant pleural mesothelioma with standard chemotherapy. The trial is conducted in Switzerland, Spain and the UK. The caseload of 144 patients was reached in August 2018. Treatment and follow-up are ongoing. The results of the primary analysis was presented at the ESMO Congress 2019 in Barcelona. Contrary to all expectations, treatment with pembrolizumab did not show any improvement in progression-free survival compared to standard chemotherapy. Publication of the results is expected in 2020.

ETOP 10-16 BOOSTER

BOOSTER is a randomised, unblinded phase II clinical trial. It compares the EGFR inhibitor osimertinib in combination with the angiogenesis inhibitor bevacizumab versus osimertinib alone as second-line therapy in patients with advanced non-small cell lung cancer (NSCLC) with EGFR activating and T790M resistance mutation. The trial is conducted in Switzerland, Ireland, the Netherlands, Spain, South Korea and Singapore.

The final caseload of 154 patients was reached in early 2019. Currently, treatment and follow-up is ongoing. Results are expected by the end of 2020.

12-17 ETOP ALERT-lung

ALERT-lung is an international, single-arm phase II clinical trial evaluating the efficacy of alectinib in pretreated patients with advanced non-small cell lung cancer (NSCLC) and a RET mutation. The primary endpoint is tumor response rate. The planned sample size is 44 patients.

The trial is ongoing in Belgium, Ireland, Italy, Spain and Switzerland and 12 patients had been enrolled by the end of 2019.

13-18 ETOP BEAT-meso

BEAT-meso is an international, randomised, unblinded phase III clinical trial in advanced malignant pleural mesothelioma. It investigates the efficacy of the immune checkpoint inhibitor Atezolizumab, in combination with the angiogenesis inhibitor Bevacizumab and standard chemotherapy as primary therapy. The primary endpoints are progression-free survival and overall survival. The sample size is 320 randomised patients. Switzerland, Belgium, France, Italy, Spain, France, Italy and the UK are participating in the trial. The first patient was randomised in April 2019 at the Insel Spital in Bern. By the end of 2019, 67 patients had already been enrolled in the trial.

14-18 CHESS

CHESS is an international, single-arm phase II clinical trial in patients with advanced non-small cell lung cancer (NSCLC) with a maximum of three metastases (oligometastatic disease). The trial will evaluate the efficacy of combined immunotherapy with the antibody durvalumab, standard chemotherapy and radiotherapy of the metastases, followed by definitive treatment of the primary tumor with surgery or radiotherapy. It is planned that a total of 47 patients will be enrolled in the trial.

The trial was activated in September 2019. At the end of 2019, 3 patients had been enrolled in the trial.

ETOP 15-19 ABC-lung

The ABC-lung trial investigates the progression-free survival of atezolizumab and bevacizumab. 95 patients from Europe will be recruited in this trial. The protocol was distributed on November 15, 2019 and regulatory submissions are in preparation. ABC-lung is a randomised, non-comparative, unblinded phase II clinical trial in patients with non-small cell lung cancer (NSCLC). It will evaluate the efficacy and tolerability of a combined immunotherapy regimen of the antibody atezolizumab and the angiogenesis inhibitor bevacizumab, as well as one of two different chemotherapy treatments. The trial protocol was sent to participating centres in Switzerland, Germany, the UK, Spain, Hong Kong, Singapore, South Korea and the United Kingdom at the end of 2019. We expect to enroll the first patients in early 2020.

Non-Interventional Projects

Number of patients recruited in non-interventional projects:

Non-interventional Projects		
Open projects	2019	Total patients
Lungscope	--	2709
Mesoscape	143	499
Fixation effects study	--	30
Total	143	3238

Lungscope

Lungscope is a scientific programme of non-interventional observational studies established and coordinated by ETOP, involving a large number of leading clinics in Europe and beyond. The aim of the Lungscope programme is to investigate the molecular epidemiology of non-small cell lung cancer (NSCLC). It is based on a decentralised biobank of tumor samples from patients with operated non-small cell lung cancer and a database with their complete clinical annotation. Based on the Lungscope master protocol, 6 subprojects have been developed so far.

Lungscope 005 PD-L1

This project investigates the prevalence of PD-L1 positivity and its association with clinical pathology, molecular profiles and clinical outcomes in 2182 cases of the Lungscope cohort with stage I-II non-small cell lung cancer (NSCLC). Our data show that high expression of PD-L1, adjusted for clinical pathological features, is associated with a better prognosis for patients with adenocarcinoma. An external quality analysis (EQA) of the tissue microarray (TMA) based scoring for PD-L1 expression and the comparison of the results of the TMAs and whole section methods showed a possible underestimation of PD-L1 expression in small tumor samples.

Lungscape 006 Tumor Mutation Burden

The aim of the project is to investigate the prognostic value of tumor mutational burden in patients with operated non-small cell lung cancer (NSCLC). For logistical reasons, the project is limited to 80 patients with stage I or II adenocarcinoma from Basel and Zurich.

Lungscape 007 ROS1

ROS1 rearrangements are oncogenic driver mutations identified in adenocarcinoma of the lung. The Lungscape 007 ROS1 project investigates the prevalence and potential prognostic value of ROS1 rearrangements in non-small cell lung cancer (NSCLC).

Mesoscape

Mesoscape is a project to study the molecular epidemiology of malignant pleural mesothelioma in Europe. It is similar in structure to Lungscape, but includes a centralised approach to sample processing. By the end of 2019, 356 cases had been recorded in the Mesoscape database. The construction of the microarrays at the centres is almost complete, so that staining and scoring can begin shortly.

Mesoscape 001 pS6 is the first module of the Mesoscape project and describes the prevalence of the phosphorylated ribosomal protein S6 and its correlation with the clinical course. pS6 is a marker of the PI3K signaling cascade and its investigation within this Mesoscape module should lead to the development of new, targeted therapies. The 001-pS6 module has been activated along with the Mesoscape master protocol.

Fixation effects study

This study on pathology pre-analytics was initiated by ETOP in 2015. The project deals with the effects of over-fixation as well as delayed fixation and investigates the associated effect on the different proteins in the tissue (lung cancer or healthy tissue). The micro-arrays (TMAs) were prepared centrally at the "VU University Medical Center" in Amsterdam and sections were sent to the participating laboratories for staining and scoring. The results were analysed in 2017 and presented at the European Lung Congress 2018 in Geneva.

New ETOP Projects

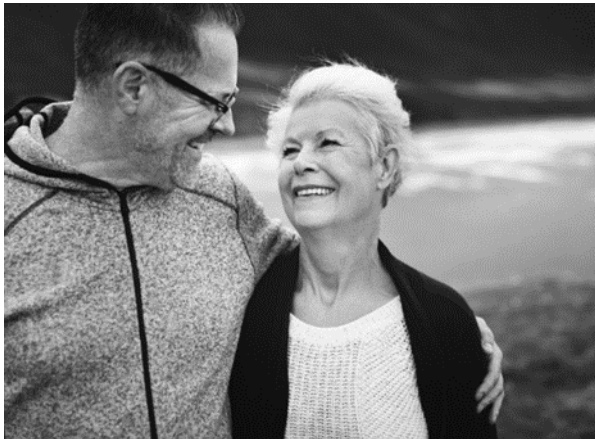
ETOP 16-19 non-interventional study (NIS) about NTRK / ROS1

NTRK genes encode different neurotrophin receptors. Like the mutation of the ROS1 gene (see Lungscape module 007), the fusion of an NTRK gene with another independent gene can also appear as a potential oncogenic driver mutation. Thus, NTRK fusion genes and ROS1 rearrangements are held responsible for the development of different types of tumours in adults, but also in children. In this new ETOP project, a database on NTRK and ROS1 rearrangements in non-small cell lung cancer (NSCLC), breast cancer and sarcoma is to be established within four years. The primary goal of the project is to describe the natural course of the disease, defined by clinical characteristics, molecular findings, therapeutic interventions and treatment outcomes. This will be done with retrospective as well as prospective data collection.

This study is sponsored and coordinated by ETOP and conducted in collaboration with the International Breast Cancer Study Group (IBCSG) and other research groups on lung cancer, breast cancer and sarcoma. Activation of the study is planned for 2020.

Research on Quality of Life in ETOP Trials

Extending life expectancy in people with cancer is an important goal of cancer research. For those affected, however, it is also important how much the diagnosis and treatment limit their everyday life. In its beginnings, in the early 1980s, research on quality of life served to give those affected a voice which is taken into account when assessing the effectiveness of cancer therapies. Today, the assessment of quality of life is a central component of cancer research. To do so, patients or their relatives answer various questions relating to specific symptoms of the disease and side effects of the therapies. In addition, questions are asked on various aspects of quality of life: The physical and emotional state, the social situation and limitations in everyday activities.



Currently, patients in three ETOP trials are answering such questions about quality of life. In the first trial, patients with advanced lung cancer that has only formed a few offshoots (metastases) are participating (see trial 14-18 CHESS). In the second trial, also patients with lung cancer are participating. In these patients, the cancer has a

change in a gene (see trial 15-19 ABC-lung). The third trial is for patients with a malignant pleural mesothelioma of the pleura (see trial 13-18 BEAT-meso). In all three trials, the effects of the treatments on the quality of life of the patients are investigated. These direct experiences of patients will help physicians and future patients to better assess the advantages and disadvantages of different treatment options.

Scientific Publications

In 2019, ETOP has published 7 publications, including reports on the main results of clinical trials, translational research projects and various commentaries. The total journal impact factor in 2019 is 43,431 (average JIF 6,2044).

ETOP publishes its research results in high-ranking, peer-reviewed journals and also presents them at major international conferences.

Molina-Vila M-A, Stahel RA, Dafni U, Jordana-Ariza N, Balada-Bel A, Garzón-Ibáñez M, García-Peláez B, Mayo-de-las-Casas C, Felip E, Fontecedro AC, Gautschi O, Peters S, Massutí B, Palmero R, Aix SP, Carcereny E, Früh M, Pless M, Popat S, Cuffe S, Bidoli P, Kammler R, Roschitzki-Voser H, Tsourti Z, Karachaliou N, Rosell R. **Evolution and clinical impact of EGFR mutations in circulating free DNA in the BELIEF trial.** Journal of Thoracic Oncology 2019; Epub ahead of print. (ETOP BELIEF) (Journal of Thoracic Oncology impact factor 10.336)

Thunnissen E, Kerr KM, Dafni U, Bubendorf L, Finn SP, Soltermann A, Biernat W, Cheney R, Verbeken E, Warth A, Marchetti A, Speel E-JM, Pokharel S, Quinn AM, Monkhorst K, Navarro A, Madsen LB, Tsourti Z, Geiger T, Kammler R, Peters S, Stahel RA, Stahel RA, Rosell R, Blackhall F, Dafni U, Kerr KM, Molina MA, Bubendorf L, Weder W, Thunnissen E, Peters S, Finn S, Hiltbrunner A, Kammler R, Geiger T, Marti N, Tsourti Z, Polydoropoulou V, Zygoura P, Nicolson M, Stevenson DAJ, Mathieson W, Smit E, Radonic T, Soltermann A, Rulle U, Curioni A, Gray SG, Gately K, Barr M, Meldgaard P, Madsen LB, Savic S, Lardinois D, Nackaerts K, Doooms C, Wauters E, Van Der Borght S, Biernat W, Wrona A, Rzyman W, Jassem J, Dienemann H, Muley T, Warth A, Marchetti A, De Luca G, di Lorito A, Dingemans A-M, Speel E-JM, Ruland A, Pokharel S, Cheney R, Ferenczy P, Quinn AM, Franklin L, Baas P, Monkhorst K, van de Wiel B, Camps C, Martorell M, Navarro A, for the European Thoracic Oncology Platform Lungscape Consortium. **Programmed death-ligand 1 expression influenced by tissue sample size. Scoring based on tissue microarrays' and cross-validation with resections, in patients with, stage I–III, non-small cell lung carcinoma of the European Thoracic Oncology Platform Lungscape cohort.** Modern Pathology 2019; Epub ahead of print. (ETOP Lungscape) (Modern Pathology impact factor 6.365)

Van Seijen M, Brcic L, Gonzales AN, Sansano I, Bendek M, Brcic I, Lissenberg-Witte B, Korkmaz HI, Geiger T, Kammler R, Stahel R, Thunnissen E, on behalf of ETOP. **Impact of delayed and prolonged fixation on the evaluation of immunohistochemical staining on lung carcinoma resection specimen.** Virchows Archiv 2019; 475 (2): 191-199. (ETOP Fixation Effects) (Virchows Archiv impact factor 2.936)

Dafni U, Tsourti Z, Vervita K, Peters S. Immune checkpoint inhibitors, alone or in combination with chemotherapy, as first-line treatment for advanced non-small cell lung cancer. **A systematic review and network meta-analysis.** Lung Cancer 2019; 134: 127-140. (ETOP General) (Lung Cancer impact factor 4.486)

Peters S, Felip E, Dafni U, Belka C, Guckenberger M, Irigoyen A, Nadal E, Becker A, Veas H, Pless M, Martinez-Marti A, Tufman A, Lambrecht M, Andratschke N, Piguat AC, Kassapian M, Roschitzki-Voser H, Rabaglio-Poretti M, Stahel RA, Vansteenkiste J, De Ruysscher D. **Safety evaluation of nivolumab added concurrently to radiotherapy in a standard first line chemo-radiotherapy regimen in stage III non-small cell lung cancer - The ETOP NICOLAS trial.** Lung Cancer 2019; 133: 83-87. (ETOP NICOLAS) (Lung Cancer impact factor 4.486)

Dziadziuszko R, Smit EF, Dafni U, Wolf J, Wasag B, Biernat W, Finn SP, Kammler R, Tsourti Z, Rabaglio M, Ruepp B, Roschitzki-Voser H, Stahel RA, Felip E, Peters S. **Afatinib in non-small cell lung cancer with HER2 mutations: results of the prospective, open-label phase II NICHE trial of European Thoracic Oncology Platform (ETOP).** Journal of Thoracic Oncology 2019; 14 (6): 1086-1094. (ETOP NICHE) (Journal of Thoracic Oncology impact factor 10.336)

Kerr KM, Thunnissen E, Dafni U, Finn SP, Bubendorf L, Soltermann A, Verbeken E, Biernat W, Warth A, Marchetti A, Speel E-JM, Pokharel S, Quinn AM, Monkhorst K, Navarro A, Madsen LB, Radonic T, Wilson J, De Luca G, Gray SG, Cheney R, Savic S, Martorell M, Muley T, Baas P, Meldgaard P, Blackhall F, Dingemans A-M, Dziadziuszko R, Vansteenkiste J, Weder W, Polydoropoulou V, Geiger T, Kammler R, Peters S, Stahel R. **A retrospective cohort study of PD-L1 prevalence, molecular associations and clinical outcomes in patients with NSCLC: Results from the European Thoracic Oncology Platform (ETOP) Lungscape Project.** Lung Cancer 2019; 131: 95-103. (ETOP Lungscape) (Lung Cancer impact factor 4.486)

ETOP Activities 2019

Race for Life

On September 9, ETOP participated for the fourth time as a partner organisation in the Race for Life in Bern, a charity bike marathon and event for those who want to get involved with cancer patients. The revenue will go to cancer research projects of different partner organisations involved.

Despite the cold and wet autumn weather, 420 cyclists took part in the Race for Life, covering 14,498 kilometers and 362,201 meters in altitude difference on their racing bikes for the benefit of cancer patients. At the same time, a solidarity festival was held on the Bundesplatz. ETOP was on site with experts and was available to provide information to interested visitors.

The ETOP team "With strong wings against lung cancer" was on the bike course and campaigned with strong wings for early detection and an improved quality of life for people with lung cancer.



This year again, the ETOP team "With strong wings against lung cancer" committed itself with strong wings for early detection and an improved quality of life for people with lung cancer.

Meetings 2019

For scientists and physicians, the ETOP Annual Meeting and the ETOP Residential Workshop are important platforms for the exchange of data, research results and planned study projects. ETOP representatives also participated in various meetings with the pharmaceutical industry to discuss future ETOP research ideas.

Foundation Council Meetings

The meetings of the ETOP Foundation Council in 2019 took place in April during the European Lung Cancer Congress (ELCC) in Geneva, Switzerland and in November during the ETOP Annual Meeting in Amsterdam, Netherlands.

Independent Data Monitoring Committee (IDMC) Meetings

The results of the ongoing trials are submitted to the Independent Data Monitoring Committee (IDMC) to monitor patient safety. Four IDMC meetings were held during the year, each in the form of a conference call.

Meetings under the Auspices of ETOP and in Collaboration with ETOP

European Lung Cancer Congress (ELCC)

Participants from all over the world met at the European Lung Cancer Congress (ELCC) in Geneva from 10-13 April 2019 to learn about and discuss the latest research findings in the field of lung cancer and other thoracic malignancies.

Lungscape Pathologists and Mesoscape Meetings

The lung pathologists met on 11 April 2019 for the 7th meeting at the ELCC in Geneva.

Prof. Dr. med. Isabelle Schmitt-Opitz, Senior Physician in the Department of Thoracic Surgery at the University Hospital of Zurich, gave a presentation on Mesoscape at the World Conference on Lung Cancer in Barcelona, Spain on September 8, 2019, providing information on the latest findings.

ETOP Residential Workshop and Annual Meeting



*The canals of Amsterdam are a symbol of the city and of great cultural and historical value.
Picture credits Kathleen Beese*

The 8th ETOP Residential Workshop was held in Amsterdam, the Netherlands, from 6-8 November 2019. The event has become a successful tradition and offers young scientists the opportunity to present their research ideas and projects and discuss them with their experienced colleagues.

We thank Amgen, AstraZeneca, Bristol-Myers Squibb, Lilly, MSD, Roche and Takeda for their financial support of the 8th ETOP Residential Workshop.

The ETOP Annual Meeting took place following the Residential Workshop on 9 November 2019. The approximately 90 oncology specialists, ETOP employees and representatives of the pharmaceutical industry were once again offered a varied program with different presentations on current and planned projects. The ETOP Annual Meeting is highly appreciated as a platform for personal and scientific exchange.

We thank AstraZeneca, Bristol-Myers Squibb, Lilly, Roche and Takeda for their financial support of the ETOP Annual Meeting.

Personnel Changes in the Coordinating Office

Since this year Dr. Salome Adam and Mirjam Schneider have been supporting the ETOP team. Both of them work as research associates in the Safety and Regulatory Department.

Dr. Isabelle Zenklusen left the monitoring team at the end of the year to take up a new professional challenge. Also Dr. Florence Berger has left the team, who supported the Trial Management Team as Project Manager. We wish them all the best for their professional future and continued success.

Dr. Iris Driesang took her well-deserved retirement in November 2019. We would like to thank her for her many years of service in the Safety and Regulatory department and wish her all the best for her retirement.

Collaborative Activities

ETOP promotes the exchange of research projects and ideas in the field of thoracic malignancies among European study groups and institutions. On the ETOP website, a number of scientific resources in the field of lung cancer are available.

ETOP Conference Slide Decks

The ETOP Conference Slide Decks summarise the most important results of the most relevant congresses worldwide (ASCO, ESMO, World Conference on Lung Cancer) in the field of thoracic oncology.

The Conference Slide Decks are available on our website. These could also be realised in 2019 thanks to the financial support of Eli Lilly, for which we would like to thank them.



ETOP Conference Slide Decks 2019

	ASCO 2019	ESMO 2019	WCLC 2019
English	240	1287	1254
Chinese	95	160	187
French	93	148	202
Japanese	214	1108	843
Total downloads	642	2703	2486

Download statistics for ETOP slide decks in 2019

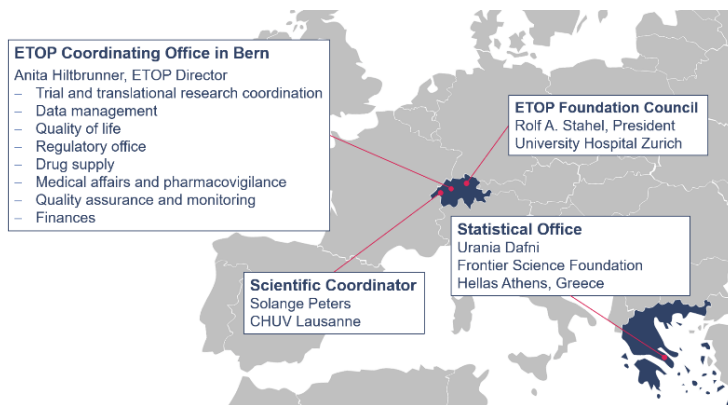
Group Structure

ETOP 10-Year Anniversary

The vision to promote and improve collaboration in clinical and translational research in the field of thoracic malignancies in Europe was discussed and supported during the ESMO Congress 2008. As a result, the European Thoracic Oncology Platform (ETOP) was officially founded in May 2009.

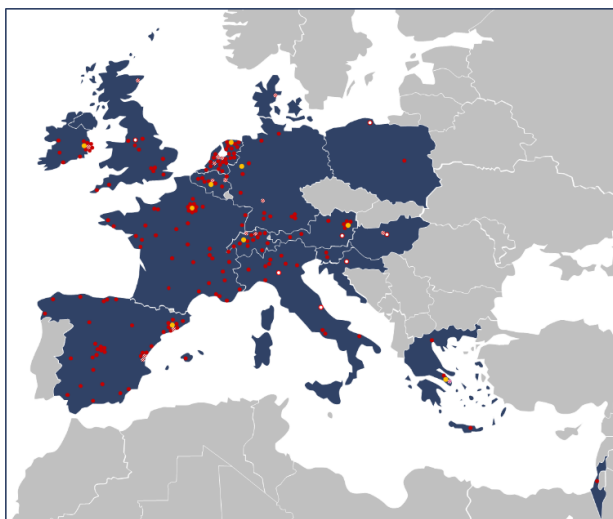
ETOP is a not-for-profit organisation under Swiss law and is based in Bern. Since its foundation, Prof. Dr. Rolf Stahel, Zurich (Chairman of the Foundation Board and Chairman of the Scientific Committee) and Prof. Solange Peters, Lausanne (Scientific Coordinator and Member of the Foundation Board) have been the driving forces behind ETOP. The clinical and translational research projects are managed by members of the Scientific Committee.

Under the direction of Anita Hiltbrunner, the Coordination Centre in Bern provides the necessary services for conducting the clinical trials. Frontier Science Foundation Hellas, a non-profit organisation led by Urania Dafni and based in Athens, Greece, provides statistical expertise for all ETOP project.



Organisation and Structure

Since its foundation 10 years ago, ETOP has been conducting academic clinical research in compliance with the highest scientific and ethical standards. ETOP organises clinical trials with major research institutes, universities and collaborative research groups. ETOP's dynamic, global network includes more than 230 study centers in 23 countries.



- Participation in clinical trials
- Participation in translational research projects
- ▨ Participation in clinical trials and translational research projects
- Collaborative research groups

ETOP Network

ETOP Foundation Council

President: Rolf. A. Stahel, Switzerland

Members: Paul Baas, the Netherlands; Enriqueta Felip, Spain; Keith Kerr, United Kingdom; Tony Mok, Hong Kong; Solange Peters, Switzerland; Sanjay Popat, United Kingdom; Rafael Rosell, Spain; Suresh Senan, the Netherlands; Walter Weder, Switzerland.

ETOP Scientific Committee

Chair: Rolf A. Stahel, Switzerland

Scientific Coordination: Solange Peters, Switzerland

Members: Anne-Marie Baird, Ireland; Rafal Dziadziuszko, Poland; Martin Edelman, USA; Corinne Faivre-Finn, UK; Enriqueta Felip, Spain; Tetsuya Mitsudomi, Japan; Maurice Perol, France; Martin Reck, Germany; Dirk de Ruyscher, the Netherlands; Egbert Smit, the Netherlands.

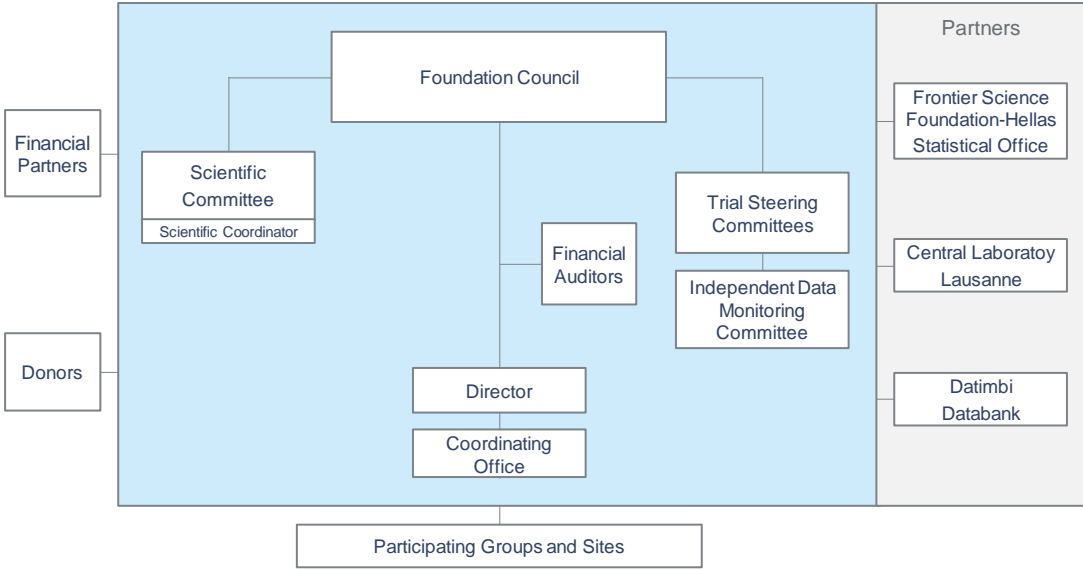
Independent Data Monitoring Committee (IDMC)

The Independent Data Monitoring Committee regularly reviews all clinical trials and interim reports to monitor patient safety.

Chair: Jean-Pierre Armand, France

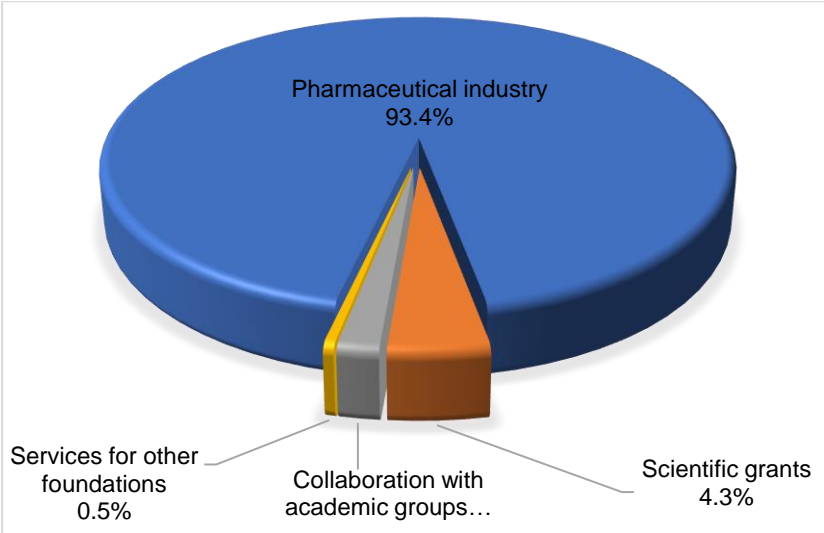
Members: Lucio Crinò, Italy; Renato Galeazzi, Switzerland; Paul Van Houtte, Belgium; Beow Yeap, USA.

ETOP Organigram



Funding of Research

The various research projects of ETOP are partially or fully funded by the pharmaceutical industry. This collaboration is based on complete academic independence and gives patients access to new drugs within the ETOP trials. ETOP receives additional funding from the Swiss National Accident Insurance Fund (SUVA), from unrestricted scholarships from the Bärbel and Paul Geissbühler Foundation, a Dutch foundation, and from the Swiss Association for Clinical Cancer Research (SAKK) through a cooperation agreement.



Funding of Research

Financial Statement 2019

The financial statements have been audited by KPMG on 16 April, 2020.

Income (in Thousand CHF)	2019	2018
Income from collaboration with industry	6'647.9	6'572.4
Further research grants	302.0	461.1
Investment income	319.9	37.7
Total	7'269.8	7'071.2
Expenses (in Thousand CHF)		
Contributions to members, participating centers	2'545.9	2'896.1
Pathology / translational research, radiology	314.5	198.3
Production slide decks, training	11.2	11.5
Website, internet	4.1	2.0
Scientific exchange and coordination, travel expenses	189.8	176.1
Personnel costs and external services (database, statistics, etc.)	3'258.5	2'923.3
Insurance, consulting, financial audit	86.9	131.5
Administrative costs	63.3	63.6
Currency exchange	320.3	588.4
Total	6'794.5	6'990.8



Information | Research

ETOP

European Thoracic Oncology Platform

c/o IBCSG Effingerstrasse 40
3008 Bern

Phone: +41 31 511 94 00

www.etop-eu.org

Follow ETOP on



Bank Details

UBS AG
Postfach
CH-8098 Zürich
Switzerland

Account number: 230-282934.01Q

IBAN: CH54 0023 0230 2829 3401

Q SWIFT: UBSWCHZH80A