



Annual Report 2020

Index

Editorial	3
Key Data	4
Clinical Trials and Projects of ETOP	4
Clinical Trials	4
Translational research in ETOP clinical trials	8
Non-Interventional Projects	8
New ETOP Projects	10
Scientific Contributions	10
Solange Peters Elected New ESMO President	11
Rosita Kammler Elected New ESBB President	12
ETOP Activities 2020	12
Race for Life.....	12
ETOP Added to DeinAdieu.ch - a Swiss Online Portal for a Self-Determined End of Life	12
Meetings 2020	13
Foundation Council Meetings	13
Independent Data Monitoring Committee (IDMC) Meetings	13
European Lung Cancer Congress (ELCC).....	13
Lungscape and Mesoscape Meetings.....	13
ETOP Residential Workshop and Annual Meeting.....	13
Funding Support from the Bärbel and Paul Geissbühler Foundation	14
Personnel Changes in the Coordinating Office	14
ETOP Platforms	15
ETOP Conference Slide Decks and Webinars	15
Group Structure	16
ETOP 10-Year Anniversary.....	16
ETOP Foundation Council.....	17
ETOP Scientific Committee	17
Independent Data Monitoring Committee (IDMC).....	17
ETOP Organigram.....	18
Funding of Research	18
Financial Statement 2020	19

Editorial

Dear Reader,

On 31 January 2020, the World Health Organization (WHO) declared the outbreak of COVID-19 a Public Health Emergency of International Concern. This dominated the year in an unprecedented fashion. The gradual spread of the virus across the world has also impacted our work. The ETOP team, for the most part, worked from home, and meetings and workshops went online. Ensuring the safety of our patients and making the necessary adjustments for the seamless continuation of our ETOP trials were our top priority and a major concern.

We extend our deepest gratitude to our colleagues and employees around the world for their commitment, their hard work and their tireless dedication, particularly over the extraordinary last year. This commitment and the unique ETOP spirit are the cornerstone of our success.

And we thank you, our readers, for your trust in our work and for your support. You help us, so that we can keep helping others!

Kind regards



Prof. Rolf A. Stahel
President, ETOP Foundation



Prof. Solange Peters
Scientific Coordinator and member of the
Foundation Council

Key Data

Publications	2020	Total
Full publications	2	20
Published abstracts	2	37
Meeting contributions	2020	Total
Oral presentations	1	16
Posters	1	25
Clinical studies	Total	
Closed trials	5	
Open trials	7	
<i>Trials that are closed to accrual</i>	3	
<i>Recruiting trials</i>	4	
<i>Newly launched trials that are not yet recruiting</i>	0	

Clinical Trials and Projects of ETOP

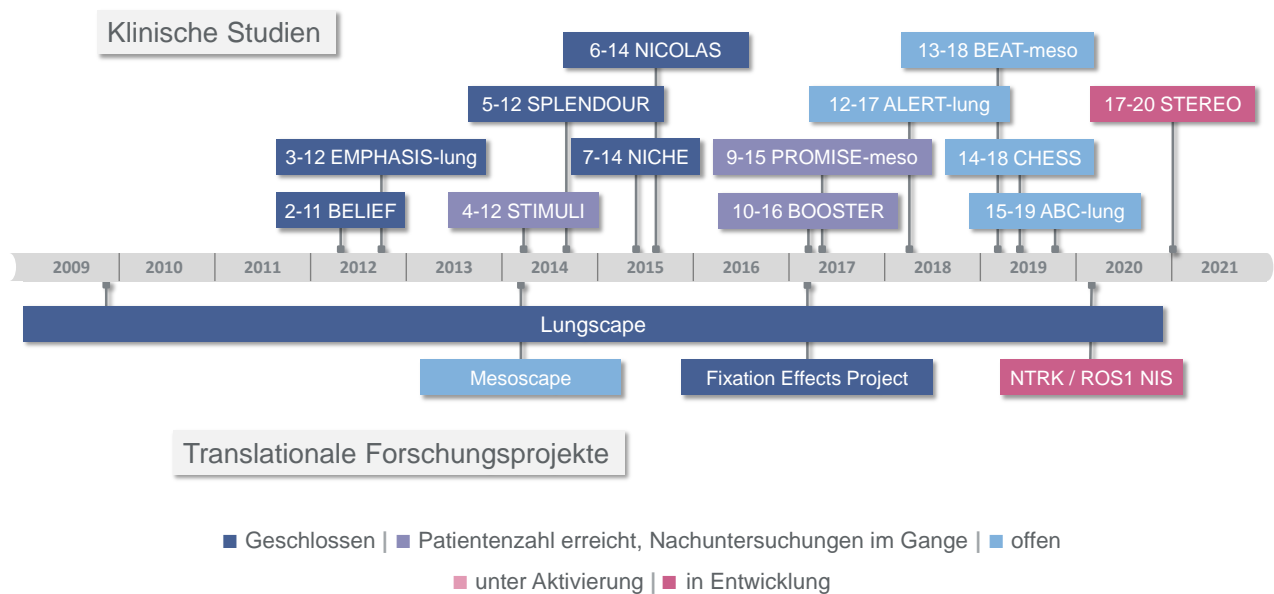


Fig. 1 ETOP Clinical Trials

Clinical Trials

ETOP 2-11 BELIEF

BELIEF is a single-arm, phase II multicentre trial exploring whether first-line erlotinib plus bevacizumab improves progression-free survival in NSCLC patients with activating EGFR mutations (del19 or L858R). Recruitment was completed in October 2014. The

number of patients was 109. The results of the primary analysis were published in 2017 and show that the addition of bevacizumab to erlotinib improves progression-free survival in this patient population. Overall survival data, together with translational research results, were published in 2020.

ETOP / IFCT 4-12 STIMULI

STIMULI is an international, randomised, unblinded phase II clinical trial investigating the effect of the two immune checkpoint inhibitors ipilimumab and nivolumab as consolidation therapy after completion of chemo- and radiotherapy in patients with small cell lung cancer (SCLC) in limited stage. This ETOP trial is conducted in collaboration with the French group IFCT and is ongoing in Switzerland, Belgium, Germany, France, Spain, the UK and Australia. The trial was closed early in 2019 due to slow recruitment with a caseload of 264 randomised patients. The primary analysis showed no benefit for consolidation therapy. The results were presented at the virtual ESMO Meeting 2020 and a corresponding manuscript submitted for publication. Patient follow-up will continue until 2022. Follow-up publications with data on overall survival and results of translational projects are planned.

ETOP 5-12 / EORTC 08111 SPLENDOUR

RANKL stimulates NF-kappaB-dependent cellular signalling processes and acts as a primary signal for bone resorption. Denosumab is a therapeutic antibody that inhibits the function of RANKL. SPLENDOUR is a randomised, open-label, phase III trial evaluating the addition of denosumab, a monoclonal antibody targeting and inhibiting RANKL, to standard first-line chemotherapy in advanced NSCLC with or without bone metastasis. This ETOP trial is conducted in collaboration with EORTC as the coordinating group. Patient recruitment was completed in January 2018, with a total of 514 randomised patients.

In the analysis of the results, no positive effect on prolonging life could be shown for denosumab, regardless of whether the patients had bone metastases or not. The results of this analysis were published in 2020. The publication of the combined analysis with the data from the randomised phase II AMGEN-249 trial is expected in 2021.

ETOP 6-14 NICOLAS

NICOLAS is an international, single-arm phase II clinical trial in patients with locally advanced non-small cell lung cancer (NSCLC). The trial investigates the tolerability of immunotherapy with the antibody Nivolumab in combination with a standard primary treatment consisting of chemotherapy and radiotherapy. The primary endpoint is the rate of occurrence of pneumonitis events.

The trial had already reached its recruitment target of 43 patients in June 2017. In order to provide additional information on effectiveness, the trial protocol was modified to allow an increase in the number of cases. Recruitment was completed in August 2018 with a total of 94 patients.

The results of the primary analysis of treatment tolerance were presented in 2019 at the ESMO Congress in Barcelona and then published. Data on clinical progression were also published in 2020. The NICOLAS trial was brought to an end in April 2020.

ETOP 8-15 / EORTC 1416 PEARLS / KEYNOTE-091

PEARLS is a triple-blind, placebo-controlled, randomised phase III clinical trial. It investigates the benefit of one-year adjuvant pembrolizumab treatment after radical surgery (lobectomy/pneumonectomy) in patients with early-stage non-small cell lung cancer (NSCLC). A total of 1380 patients will be enrolled in the trial. The trial is sponsored by MSD and coordinated by EORTC. Australia, Austria, Belgium, Brazil, Canada, Chile, Czech Republic, Denmark, Estonia, France, Germany, Greece, Hungary, Ireland, Israel, Italy, Japan, the Netherlands, Poland, Portugal, Slovenia, Spain, Switzerland and the United Kingdom are participating in the trial. The caseload of 1111 patients, 352 of them from ETOP centres, was reached in 2019. Treatment and follow-up of the included patients is still ongoing.

ETOP 9-15 PROMISE-meso

PROMISE-meso is a randomised, unblinded phase III clinical trial comparing pembrolizumab for the treatment of advanced, pretreated malignant pleural mesothelioma with standard chemotherapy. The trial is conducted in Switzerland, Spain and the UK. The caseload of 144 patients was reached in August 2018. Treatment and follow-up are ongoing. The results of the primary analysis were presented at the ESMO Congress 2019 in Barcelona. Contrary to all expectations, treatment with pembrolizumab did not show any improvement in progression-free survival compared to standard chemotherapy. The results of this primary analysis were published in 2020. Patient follow-up will continue until end-2021. Follow-up publications with data on overall survival and results of translational projects are planned.

ETOP 10-16 BOOSTER

BOOSTER is a randomised, unblinded phase II clinical trial. It compares the EGFR inhibitor osimertinib in combination with the angiogenesis inhibitor bevacizumab versus osimertinib alone as second-line therapy in patients with advanced non-small cell lung cancer (NSCLC) with activating EGFR and T790M resistance mutation. The trial is conducted in Switzerland, Ireland, the Netherlands, Spain, South Korea and Singapore. The final caseload of 154 patients was reached in early 2019. Treatment and follow-up is currently ongoing. Results are expected during the coming year.

12-17 ETOP ALERT-lung

ALERT-lung is an international, single-arm phase II clinical trial evaluating the efficacy of alectinib in pretreated patients with advanced non-small cell lung cancer (NSCLC) and a RET mutation. The primary endpoint is tumour response rate. The planned sample size is 44 patients. The trial is ongoing in Belgium, Ireland, Italy, Spain and Switzerland and 14 patients had been enrolled by the end of 2020. Since the activation of the ALERT-lung trial in April 2018, promising new active substances for the treatment of these patients have been developed. At the same time, a trial in Japan has reported that alectinib only shows moderate effect in this indication. In consultation with the investigators, a decision was taken to terminate the ALERT-lung study in early 2021.

13-18 ETOP BEAT-meso

BEAT-meso is an international, randomised, unblinded phase III clinical trial in advanced malignant pleural mesothelioma. It investigates the efficacy of the immune checkpoint inhibitor atezolizumab, in combination with the angiogenesis inhibitor bevacizumab and standard chemotherapy as primary therapy. The primary endpoints are progression-free survival and overall survival. The sample size is 320 randomised patients. Switzerland, Belgium, France, Italy, Spain and the UK are participating in the trial.

Recruitment has far exceeded expectations. The first patient was included in the study in April 2019, and 280 patients had already been included by the end of 2020.

14-18 CHESS

CHESS is an international, single-arm phase II clinical trial in patients with advanced non-small cell lung cancer (NSCLC) with a maximum of three metastases (oligometastatic disease). The trial will evaluate the efficacy of combined immunotherapy with the antibody durvalumab, standard chemotherapy and radiotherapy of the metastases, followed by definitive treatment of the primary tumour with surgery or radiotherapy. A total of 47 patients are expected to be enrolled in the trial.

The trial was activated in September 2019. At the end of 2020, 13 patients had been enrolled in the trial.

ETOP 15-19 ABC-lung

ABC-lung is a randomised, non-comparative, unblinded phase II clinical trial in patients with non-small cell lung cancer (NSCLC). It will evaluate the efficacy and tolerability of a combined immunotherapy regimen of the antibody atezolizumab and the angiogenesis inhibitor bevacizumab, as well as one of two different chemotherapy treatments. The trial was activated in April 2020 and the first patient was randomised in September 2020. At the end of 2020, eight patients had been enrolled in the trial.

Number of patients included in ETOP clinical trials:

Number of patients in ETOP clinical trials:		
Closed trials	2020	Total patients
2-11 BELIEF		
3-12 EMPHASIS-lung		
5-12 SPLENDOUR	--	514
6-14 NICOLAS	--	94
7-14 NICHE		
Open trials		
4-12 STIMULI	--	
9-15 PROMISE-meso		
10-16 BOOSTER	--	
12-17 ALERT-lung	2	14
13-18 BEAT-meso	213	280
14-18 CHESS	10	13
15-19 ABC-lung	8	8
Total patients in ETOP-sponsored clinical trials	233	1690

Total patients from ETOP centres in non-ETOP sponsored clinical trials	16	387
Total patients in clinical trials from ETOP centres	249	2077

Translational research in ETOP clinical trials

“In the drive towards personalized medicine, molecular technologies are the engine, but biospecimens are the fuel.” Carolyn Compton, M.D., PhD.

Translational research is the bridge between basic research and clinical research. Research results from laboratories must find practical applications in patient treatment. Knowledge gained through basic research is thus “translated” into clinical routine. And at the same time, clinical practice prompts questions that are passed on to basic research scientists.

This collaboration between scientists and doctors within translational research is particularly significant in oncology. Translational research is vital for developing new treatment possibilities for patients with lung cancer. It is the key which opens the door to personalised medicine, with the overarching objective of finding customised therapy for every patient.

The collection of biospecimens is today a key element of almost every ETOP clinical trial. With the agreement of patients, tumour tissues and blood are sampled and collected in a central location. These biobanks are then used for the purposes of translational research.

In addition, with Lungscope and Mesoscape, ETOP has launched two independent translational research projects. The biobanks created during these non-interventional studies form the basis for numerous research projects.

Non-Interventional Projects

Lungscope

Lungscope is a scientific programme of non-interventional observational studies established and coordinated by ETOP, involving a large number of leading hospitals in Europe and beyond. The aim of the Lungscope programme is to investigate the molecular epidemiology of non-small cell lung cancer (NSCLC). It is based on a decentralised biobank of tumour samples from patients with operated non-small cell lung cancer and a database with their complete clinical annotation. Based on the Lungscope master protocol, 7 subprojects have been developed so far.

Lungscope 005 PD-L1

This project investigates the prevalence of PD-L1 positivity and its association with clinical pathology, molecular profiles and clinical outcomes in 2182 cases of the Lungscope cohort with stage I-II non-small cell lung cancer (NSCLC). Our data show that high expression of PD-L1, adjusted for clinical pathological features, is associated with a better prognosis for patients with adenocarcinoma. An external quality analysis (EQA) of the tissue microarray (TMA) based scoring for PD-L1 expression and the comparison of the results of the TMAs and whole section methods showed a possible underestimation of PD-L1 expression in small tumour samples.

Lungscape 006 Tumour Mutation Burden

The aim of this project is to investigate the prognostic value of tumour mutational burden in patients with operated non-small cell lung cancer (NSCLC). For logistical reasons, the project is limited to 80 patients with stage I or II adenocarcinoma from Basel and Zurich.

Lungscape 007 ROS1

ROS1 rearrangements are oncogenic driver mutations, found in particular in cases of lung adenocarcinoma. The Lungscape 007 ROS1 project investigates the prevalence and potential prognostic value of ROS1 rearrangements in non-small cell lung cancer (NSCLC).

Mesoscape

Mesoscape is a project to study the molecular epidemiology of malignant pleural mesothelioma in Europe. It is similar in structure to Lungscape, but includes a centralised approach to sample processing. By the end of 2020, 499 cases had been recorded in the Mesoscape database. The construction of microarrays at the centres has been completed, and staining and scoring has been carried out for the first subproject.

Mesoscape 001 pS6 is the first module of the Mesoscape project and describes the prevalence of the phosphorylated ribosomal protein S6 and its correlation with the clinical course. pS6 is a marker of the PI3K signalling cascade and it is hoped that its investigation within this Mesoscape module will lead to the development of new, targeted therapies. The 001 pS6 module was activated along with the Mesoscape master protocol, carried out in 2020 and presented at the 2020 World Conference on Lung Cancer.

Total number of patients included in ETOP non-interventional projects:

Non-Interventional Projects	
	Total patients
Lungscape	2709
Mesoscape	499
Fixation effects study	30
Total	3238

New ETOP Projects

ETOP 17-20 STEREO

STEREO is an international, single-arm phase II clinical trial in patients with advanced non-small cell lung cancer (NSCLC) with a maximum of five metastases (oligometastatic disease). It will evaluate the efficacy and tolerability of first-line treatment with the EGFR-TKI osimertinib and local ablative radiotherapy.

The study will be activated in Europe in Spain, Italy, the Netherlands and Switzerland, as well as in Asia in Singapore and South Korea. A total of 60 patients are expected to be enrolled in the trial.

The protocol is currently being written and activation is planned for next year.

Lungscope 003 sub-project Gene-Read

For a specific Lungscope cohort, DNA samples archived during a previous Lungscope project will be analysed using next-generation sequencing. The analysis is currently being carried out by Pangaea Oncology in Barcelona, Spain.

Scientific Contributions

Four additional scientific contributions were published in 2020. ETOP has thus published a total of 20 scientific contributions since it was founded:

Popat S, Curioni-Fontecedro A, Dafni U, Shah R, O'Brien M, Pope A, Fisher P, Spicer J, Roy A, Gilligan D, Gautschi O, Nadal E, Janthur WD, López Castro R, García Campelo R, Rusakiewicz S, Letovanec I, Polydoropoulou V, Roschitzki-Voser H, Ruepp B, Gasca-Ruchti A, Peters S, Stahel RA. *A multicentre randomised phase III trial comparing pembrolizumab versus single-agent chemotherapy for advanced pre-treated malignant pleural mesothelioma: the European Thoracic Oncology Platform (ETOP 9-15) PROMISE-meso trial.* Annals of Oncology 2020; 31 (12): 1734-1745. (ETOP PROMISE-meso) (Annals of Oncology impact factor 14.196)

Peters S, Danson S, Hasan B, Dafni U, Reinmuth N, Majem M, Tournoy KG, Mark MT, Pless M, Cobo M, Rodriguez-Abreu D, Falchero L, Moran T, Ortega Granados AL, Monnet I, Mohorcic K, Sureda BM, Betticher D, Demedts I, Macias JA, Cuffe S, Luciani A, Sanchez JG, Curioni-Fontecedro A, Gautschi O, Price G, Coate L, von Moos R, Zielinski C, Provencio M, Menis J, Ruepp B, Pochesci A, Roschitzki-Voser H, Besse B, Rabaglio M, O'Brien MER, Stahel RA. *A Randomized Open-Label Phase III Trial Evaluating the Addition of Denosumab to Standard First-Line Treatment in Advanced NSCLC: The European Thoracic Oncology Platform (ETOP) and European Organisation for Research and Treatment of Cancer (EORTC) SPLENDOUR Trial.* Journal of Thoracic Oncology 2020; 15 (10): 1647- 1656. (ETOP SPLENDOUR) (Journal of Thoracic Oncology impact factor 12.460)

Molina-Vila M-A, Stahel RA, Dafni U, Jordana-Ariza N, Balada-Bel A, Garzón-Ibáñez M, GarcíaPeláez B, Mayo-de-las-Casas C, Felip E, Fontecedro AC, Gautschi O, Peters S, Massutí B, Palmero R, Aix SP, Carcereny E, Früh M, Pless M, Popat S, Cuffe S, Bidoli P, Kammler R, Roschitzki-Voser H, Tsourti Z, Karachaliou N, Rosell R. *Evolution and clinical impact of EGFR mutations in circulating free DNA in the BELIEF trial.* Journal of Thoracic Oncology 2020; 15 (3): 416-425. (ETOP BELIEF) (Journal of Thoracic Oncology impact factor 12.460)

Thunnissen E, Kerr KM, Dafni U, Bubendorf L, Finn SP, Soltermann A, Biernat W, Cheney R, Verbeke E, Warth A, Marchetti A, Speel E-JM, Pokharel S, Quinn AM, Monkhurst K, Navarro A, Madsen LB, Tsourti Z, Geiger T, Kammler R, Peters S, Stahel RA, Stahel RA, Rosell R, Blackhall F, Dafni U, Kerr KM, Molina MA, Bubendorf L, Weder W, Thunnissen E, Peters S, Finn S, Hiltbrunner A, Kammler R, Geiger T, Marti N, Tsourti Z, Polydoropoulou V, Zygoura P, Nicolson M, Stevenson DAJ, Mathieson W, Smit E, Radonic T, Soltermann A, Rulle U, Curioni A, Gray SG, Gately K, Barr

M, Meldgaard P, Madsen LB, Savic S, Lardinois D, Nackaerts K, Dooms C, Wauters E, Van Der Borgh S, Biernat W, Wrona A, Rzyman W, Jassem J, Dienemann H, Muley T, Warth A, Marchetti A, De Luca G, di Lorito A, Dingemans A-M, Speel E-JM, Ruland A, Pokharel S, Cheney R, Ferenczy P, Quinn AM, Franklin L, Baas P, Monkhurst K, van de Wiel B, Camps C, Martorell M, Navarro A. *Programmed deathligand 1 expression influenced by tissue sample size. Scoring based on tissue microarrays' and crossvalidation with resections, in patients with, stage I-III, non-small cell lung carcinoma of the European Thoracic Oncology Platform Lungscape cohort.* Modern Pathology 2020; 33: 792-801. (ETOP Lungscape) (Modern Pathology impact factor 6.365).

Solange Peters Elected New ESMO President



Fig. 2 Prof. Solange Peters, ESMO President 2020

The European Society for Medical Oncology (ESMO) has elected Professor Solange Peters, MD, PhD, as its President for 2020-2022. ESMO is the leading professional organisation for medical oncology, with more than 25,000 members from across the world. ESMO was founded in 1975 and is headquartered in Lugano.

Prof. Peters is Head of Medical Oncology at Lausanne University Hospital. She is also a member of the IASLC, where she acts as a Board Member. In addition, she is a member of AACR (American Association for Cancer Research) and EORTC (European Organisation for Research and Treatment of Cancer).

With regard to national organisations, Prof. Peters is vice President of SAMO (Swiss Academy for Multidisciplinary Oncology), member of SAKK (Swiss Group for Clinical Cancer Research), FMH (Association of Swiss Physicians) and ASMAC/VSAO (Association of Swiss Interns and Residents). She was also the president of FOROME (Association Romande pour la formation continue en oncologie médicale) for 5 years.

We congratulate Prof. Peters on her election and wish her success and satisfaction in her new role as ESMO President!

Rosita Kammler Elected New ESBB President



Fig. 3 Rosita Kammler, Head Translational Research Coordination ETOP

On 26 August 2020, Rosita Kammler was elected as the new ESBB President. ESBB (European, Middle Eastern & African Society for Biopreservation and Biobanking) is an international nonprofit organisation (AISBL) headquartered in Brussels, Belgium, that provides a scientific network to promote biosharing in Europe, the Middle East, Africa and beyond. ESBB brings together researchers, biobankers, industry and patients in order to promote biomedical research.

Rosita Kammler is responsible for managing translational research activities at ETOP. Her work has revolved around clinical trial biobanking, translational research coordination and project management for the past 18 years.

We congratulate Rosita Kammler on her election and wish her success and satisfaction of function new role as ESBB President!

ETOP Activities 2020

Race for Life

The Race for Life was suspended in 2020 due to the coronavirus pandemic. The ETOP team "With strong wings against lung cancer" will return to the bike course on 12 September 2021 and campaign with strong wings for early detection and an improved quality of life for people with lung cancer.

ETOP Added to DeinAdieu.ch - a Swiss Online Portal for a Self-Determined End of Life

DeinAdieu.ch is an independent Swiss online portal for a self-determined end of life.

Over the course of your life, there are various ways to achieve things that continue to have an impact long after you are gone. The values you hold most dear are everlasting, and you can contribute to their continuation by means of a legacy. One way to do this is to bequeath a legacy to an organisation such as ETOP.

DeinAdieu.ch provides free, no-obligation support for writing a will for your personal situation, a patient decree and advance care directives, and provides a free template for obituaries.

<https://app.deinadieu.ch/testamentgenerator/ngo/7440>
<https://www.deinadieu.ch>

Meetings 2020

Like many other medical congresses, ETOP Meetings took place online in 2020 due to the coronavirus pandemic.

For scientists and physicians, the ETOP Annual Meeting and the ETOP Residential Workshop are important platforms for the exchange of data, research results and planned study projects. ETOP representatives also participated in various meetings with the pharmaceutical industry to discuss future ETOP research ideas.

Foundation Council Meetings

The ETOP Foundation Council met virtually in 2020, in April and November (during the ETOP Annual Meeting).

Independent Data Monitoring Committee (IDMC) Meetings

The results of ongoing trials are submitted to the Independent Data Monitoring Committee (IDMC) to monitor patient safety. Four IDMC meetings were held during the year, each in the form of a conference call.

Lucio Crinò was elected as the new Chair of the IDMC in March 2020.

European Lung Cancer Congress (ELCC)

Originally planned for 15 – 18 April 2020, the European Lung Cancer Congress was cancelled due to the coronavirus pandemic.

Lungscape and Mesoscape Meetings

The eighth lung pathologist meeting took place virtually in April 2020.

ETOP Residential Workshop and Annual Meeting



Fig. 4 Zürich Picture credits Kathleen Beese

The 9th ETOP Residential Workshop took place virtually on 29 October 2020. Eleven young scientists from five countries participated in the Workshop, led by twelve experts

in the field of thoracic oncology. This was an opportunity to present ongoing and planned research ideas and projects.

We thank Bristol-Myers Squibb, Eli Lilly, MSD, Roche and Takeda for their financial support of the 9th ETOP Residential Workshop.

The ETOP Annual Meeting took place virtually on 30 October 2020. Around 90 oncology specialists and ETOP employees registered for the virtual Annual Meeting, which offered a varied programme with presentations on current and planned projects.

We thank Bristol-Myers Squibb, Eli Lilly, Roche and Takeda for their financial support of the ETOP Annual Meeting.

Funding Support from the Bärbel and Paul Geissbühler Foundation

Once again, the Bärbel and Paul Geissbühler Foundation supported ETOP this year with a generous contribution. We extend our deepest thanks.

This financial contribution places responsibility on ETOP. It is naturally our duty to ensure that the funds which with we are entrusted are used with the utmost care.

Personnel Changes in the Coordinating Office

We are ETOP



Fig. 5 We are ETOP

Dr. Anina Berger and Dr. Robin Schweri have been supporting the ETOP team since earlier this year. They both work as research associates in the ETOP Data Management

department. Fabienne Wyss has been supporting the CRA team since 1 April, and Dr Isabel Zigomo joined ETOP as a Medical Advisor on 1 October.

Dr. med. Manuela Rabaglio left the team at the end of August. She successfully led our Medical Affairs department for many years. Today, she works exclusively for the Inselspital University Hospital in Bern.

Dr. Lucie Mlejnkova left the ETOP team at the end of September.

We wish both of them all the best for their professional future and much success.

ETOP Platforms

ETOP is a platform for scientific exchange between European study groups and institutions engaged in research on lung cancer and thoracic oncology. ETOP thus promotes ideas and research on thoracic malignancies and both supports and leads an increasing number of translational research projects and clinical trials. The ETOP website hosts a series of scientific resources for scientists in the field of lung cancer (such as conferences slide decks, video news, as well as access to the journal “Lung Cancer”).

ETOP Conference Slide Decks and Webinars

The ETOP Conference Slide Decks summarise the most important results of the most relevant congresses worldwide (AACR, ASCO, ESMO, World Conference on Lung Cancer) in the field of thoracic oncology. They are available in English, French, Japanese and Chinese.



Fig. 6 ETOP Conference Slide Sets 2020

Due to the exceptional situation in 2020, a live webinar format was used for the first time in order to present the highlights of the most important congresses in the form of short presentations. For the ESMO Virtual Congress, a live webinar was also organised especially for Asia. The live webinars gave participants the opportunity to ask speakers questions, which were then answered directly.



Fig. 7 ETOP Live Webinars 2020

The Conference Slide Sets and recorded webinars can be downloaded from the ETOP website. They have been realised with the kind support of Eli Lilly, for which we would like to thank them!

Download statistics for ETOP slide sets:

	AACR 2020	ASCO 2020	EMO 2020
English	2052	307	1039
Chinese	511	5	156
French	359	12	117
Japanese	1345	113	384
Total downloads	4267	437	1696

Group Structure

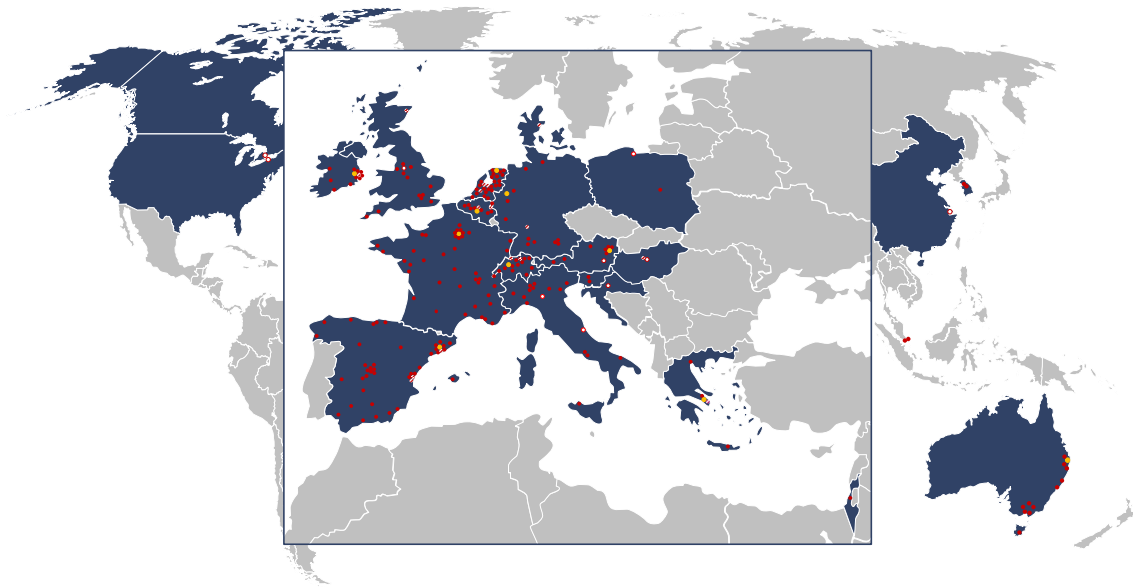
ETOP 10-Year Anniversary

On 18 January 2020, employees and friends celebrated the 10-year anniversary of ETOP. After a scientific overview of ETOP’s past and future at Zurich University Hospital and a cultural excursion to the Kunsthaus Zürich, guests were treated to fine dining and music at the “Haus zum Rüden”.



Fig. 8 ETOP 10-year anniversary Picture credits Kathleen Beese

Since its foundation 10 years ago, ETOP has conducted academic clinical research in compliance with the highest scientific and ethical standards. ETOP organises clinical trials with major research institutes, universities and collaborative research groups. ETOP’s dynamic, global network now includes more than 230 study centres in 23 countries.



- Participation in clinical trials
- Participation in translational research projects
- Participation in clinical trials and translational research projects
- Collaborative research groups

Fig. 9 ETOP Network

ETOP Foundation Council

President: Rolf. A. Stahel, Switzerland

Members: Paul Baas, the Netherlands; Enriqueta Felip, Spain; Keith Kerr, United Kingdom; Tony Mok, Hong Kong; Solange Peters, Switzerland; Sanjay Popat, United Kingdom; Rafael Rosell, Spain; Suresh Senan, the Netherlands; Walter Weder, Switzerland.

ETOP Scientific Committee

Chair: Rolf A. Stahel, Switzerland

Scientific Coordination: Solange Peters, Switzerland

Members: Anne-Marie Baird, Ireland; Rafal Dziadziuszko, Poland; Martin Edelman, USA; Corinne Faivre-Finn, UK; Enriqueta Felip, Spain; Tetsuya Mitsudomi, Japan; Maurice Perol, France; Martin Reck, Germany; Dirk de Ruyscher, the Netherlands; Egbert Smit, the Netherlands.

Independent Data Monitoring Committee (IDMC)

The Independent Data Monitoring Committee regularly reviews all clinical trials and interim reports to monitor patient safety.

Chair: Lucio Crinò, Italy

Members: Jean-Pierre Armand, France; Renato Galeazzi, Switzerland; Paul Van Houtte, Belgium; Beow Yeap, USA.

ETOP Organigram

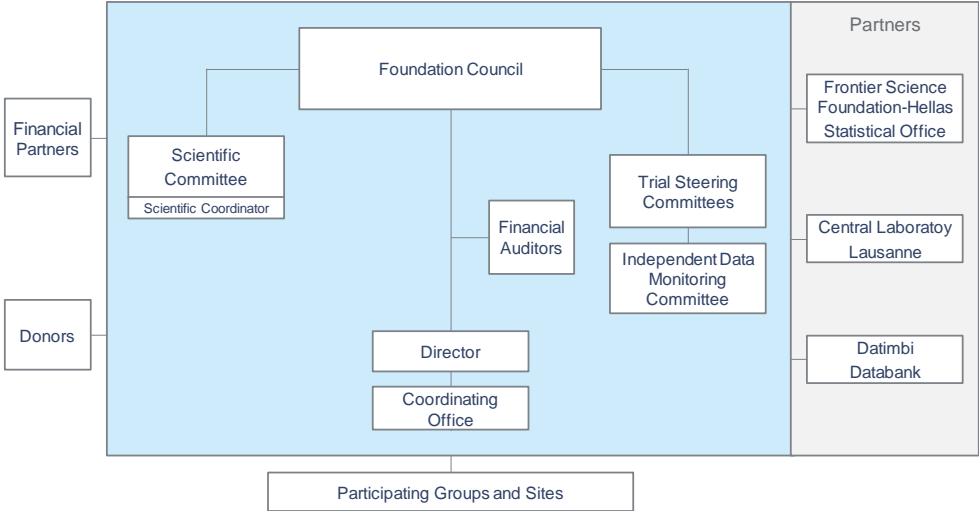


Fig. 10 ETOP Organigram

Funding of Research

The various research projects of ETOP are partially or fully funded by the pharmaceutical industry. This collaboration is based on complete academic independence and gives patients access to new drugs within ETOP trials. ETOP receives additional funding from the Swiss National Accident Insurance Fund (SUVA), from unrestricted scholarships from the Bärbel and Paul Geissbühler Foundation, a Dutch foundation, and from the Swiss Association for Clinical Cancer Research (SAKK) through a cooperation agreement.

Financial Statement 2020

The financial statements were audited by KPMG on 13 April 2021.

Income (in Thousand CHF)	2020	2019
Income from collaboration with industry	6,856.3	6,647.9
Further research grants	338.2	302.0
Investment income	694.6	319.9
Total	7,889.1	7,269.8
Expenses (in Thousand CHF)		
Contributions to members, participating centres	3,309.6	2,545.9
Pathology / translational research, radiology	365.9	314.5
Production slide decks, training	44.0	11.2
Website, internet	5.6	4.1
Scientific exchange and coordination, travel expenses	51.5	189.8
Personnel costs and external services (database, statistics, etc.)	3,353.5	3,258.5
Insurance, consulting, financial audit	119.3	86.9
Administrative costs	106.1	63.3
Currency exchange	46.0	320.3
Total	7,401.5	6,794.5



Information | Research

ETOP
European Thoracic Oncology Platform

c/o IBCSG Effingerstrasse 40
3008 Bern

Phone +41 31 511 94 00

www.etop-eu.org

Follow ETOP on



Bank details

UBS AG
Postfach
CH-8098 Zürich
Switzerland

Account number: 230-282934.01Q

IBAN: CH54 0023 0230 2829 3401

Q SWIFT: UBSWCHZH80A